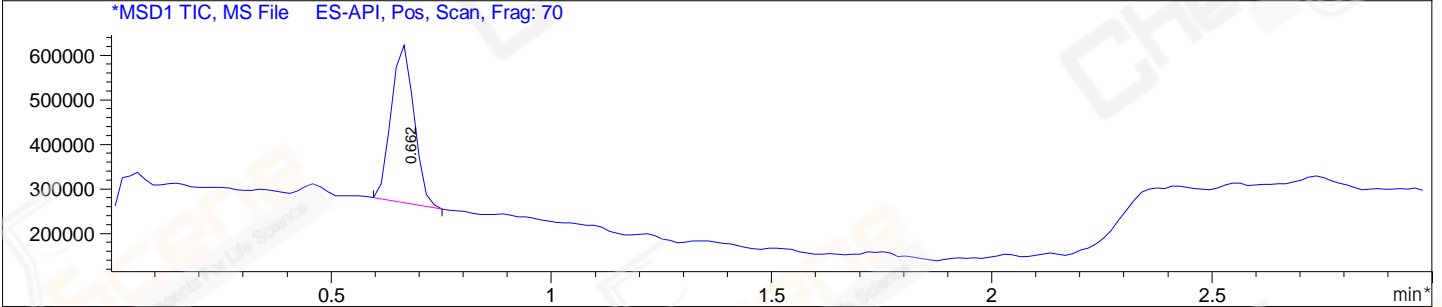
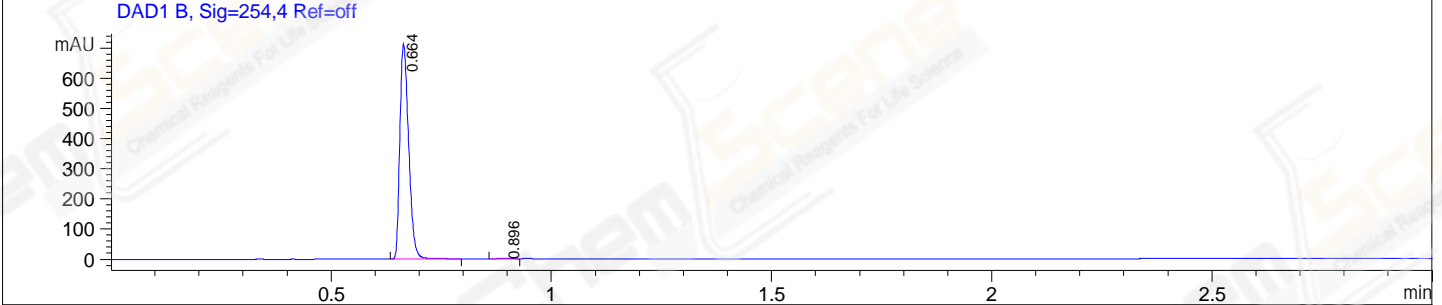
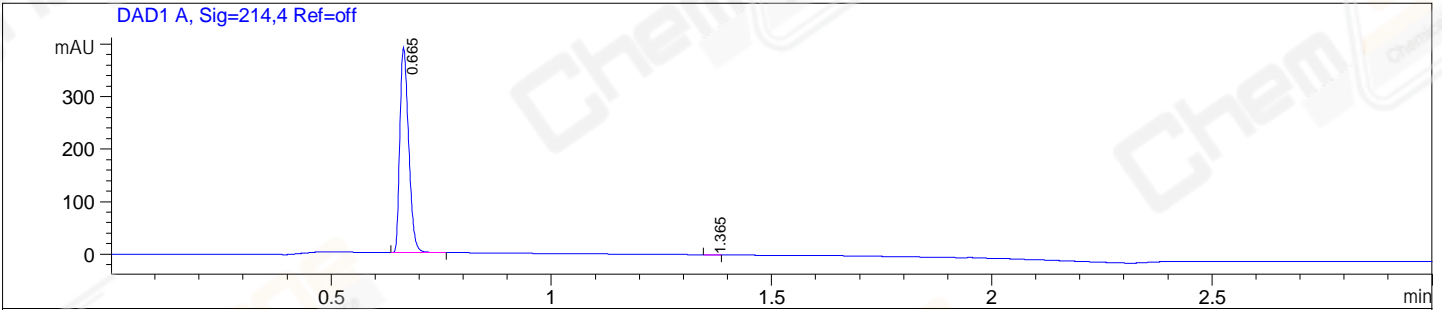


File E:\ChemStation\1\DATA\2023\2023-08\2023-08-25\CPK2023-824-158787-UPLC-MS-10-011707.D
 Injection Date : 25-Aug-23, 11:03:28 Tgt Mass(EZX) :
 Sample Name : CPK2023-824-158787 Location : P1-A-01
 Acq. Operator : LY_2278 Inj : 1
 Spec. Reported : MS Integration Inj Volume : 0.5 ul
 Acq. Method : E:\ChemStation\1\Methods\1-POS-UPLC3.0MIN(1.2)(150-1000).M
 Analysis Method : E:\CHEMSTATION\1\METHODS\1-POS-UPLC3.0MIN(1.2)(150-1000).M
 CAS NO. : 103-90-2 WalkUp method: '1-POS-3MIN' Project: CPK2023
 Method Info : Mobile Phase: A: water(0.01%TFA) B:ACN(0.01%TFA)
 Gradient: 5% to 95%B within 2.0 min
 Flow Rate :1.2ml/min
 Column :Shim-pack Scepter C18-120, 3.0*33mm,3um
 Oven Temperature : 45C



Integration Results for DAD1 A, Sig=214,4 Ref=off

RetTim	Width	Area	Height	Area%
0.66	0.02	543.83	389.49	99.96
1.37	0.02	0.24	0.17	0.04

Integration Results for DAD1 B, Sig=254,4 Ref=off

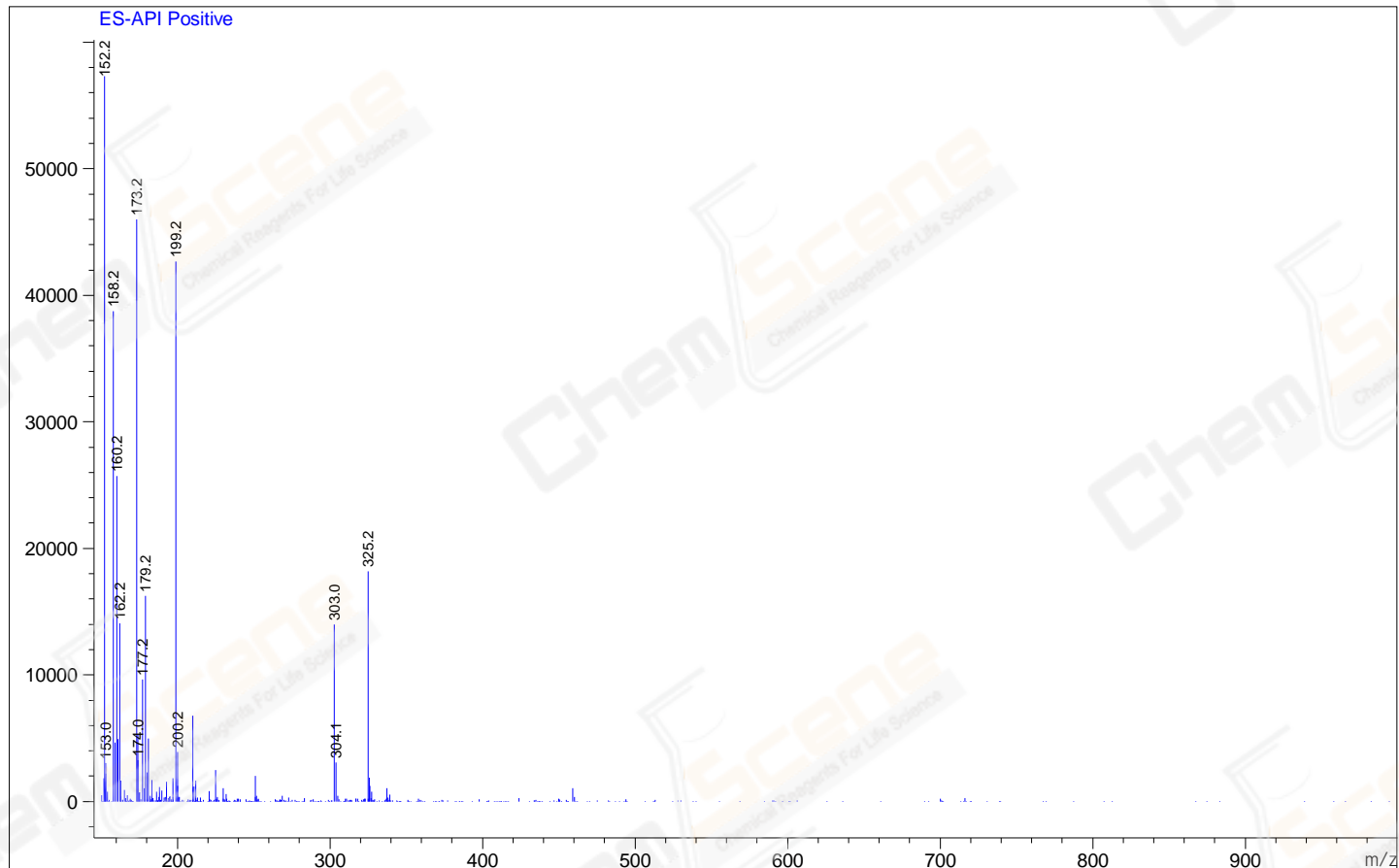
RetTim	Width	Area	Height	Area%
0.66	0.02	991.31	713.84	99.75
0.90	0.03	2.45	1.32	0.25

Integration Results for MSD1 TIC, MS File

RetTim	Width	Area	Height	Area%
0.66	0.06	1276432.50	355247.72	100.00

Ret. Time: 0.66

<<<< POSITIVE SPECTRA >>>>



*** End of Report ***