

File ..\2018\20180409\20180409\CPK2018-408-16787.D Tgt Mass (CHM):

Injection Date : 9 Apr 18 6:55 pm +0800 Seq. Line : 116

Sample Name : CPK2018-408-16787 Location : P2-D-08

Acq. Operator : SYSTEM Inj : 1

Spec. Reported : MS Integration Inj Volume : 3 ul

Acq. Method : D:\LCMS03\Data\2018\20180409\20180409\1-POS-3MIN.M

Analysis Method : D:\LCMS03\Data\2018\20180409\20180409\1-POS-3MIN.M

Catalog No : CS-3081 Batch#16787

Method Info : Mobile Phase: A: water(0.01%TFA) B:ACN(0.01%TFA)

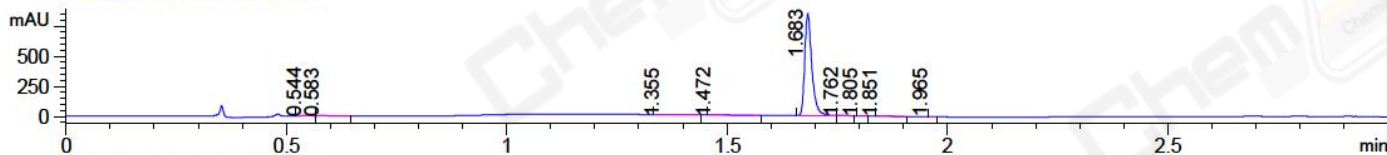
Gradient: 5% to 95%B within 1.3 min

Flow Rate :1.8ml/min

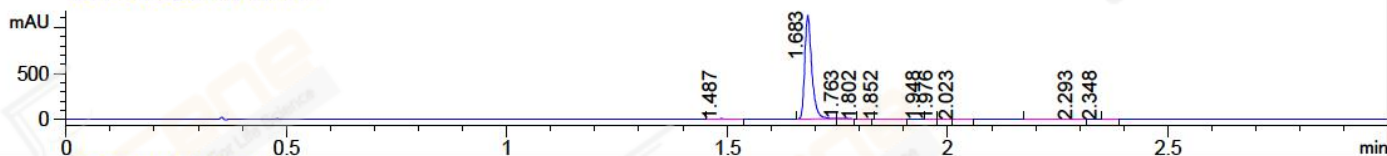
Column :SunFire C18, 4.6*50mm,3.5um A-RP-186

Oven Temperature : 45C

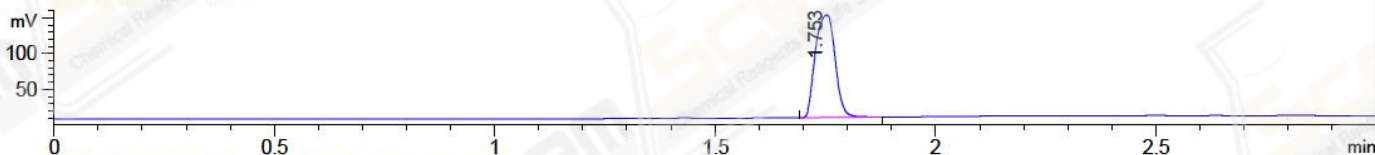
DAD1 A, Sig=214,4 Ref=off



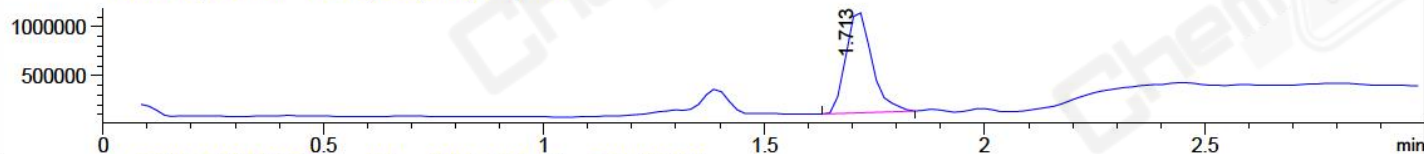
DAD1 B, Sig=254,4 Ref=off



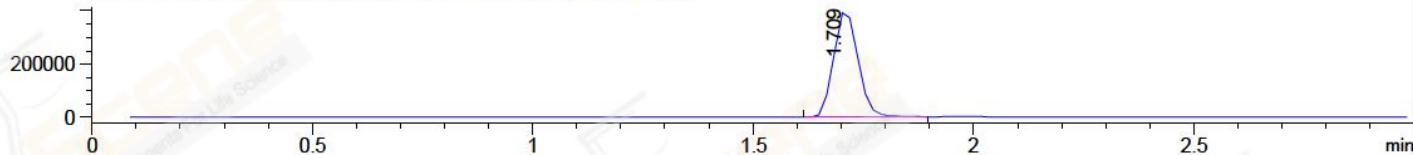
ELS1 A, ELSD Signal



MSD1 TIC, MS File ES-API, Pos, Scan, Frag: 70



Ion 269.3, MSD1 269.3, Target Mass 268.3 +H Positive, EIC=269:270



Integration Results for DAD1 A, Sig=214,4 Ref=off

RetTim	Width	Area	Height	Area%	MS (+)
0.54	0.02	6.41	5.29	0.66	102
0.58	0.03	1.93	0.99	0.20	102
1.36	0.03	2.23	1.05	0.23	702
1.47	0.02	5.07	2.94	0.52	102
1.68	0.02	945.12	846.43	97.67	559
1.76	0.02	4.00	3.99	0.41	559
1.81	0.02	0.51	0.49	0.05	233
1.85	0.02	2.00	1.49	0.21	233
1.96	0.01	0.34	0.45	0.04	233

Integration Results for DAD1 B, Sig=254,4 Ref=off

RetTim	Width	Area	Height	Area%	MS (+)
1.49	0.02	1.84	1.23	0.15	102
1.68	0.02	1249.18	1122.69	98.88	559
1.76	0.02	5.22	5.28	0.41	559
1.80	0.01	0.54	0.60	0.04	233
1.85	0.02	1.96	1.50	0.16	233

1.95	0.02	1.11	-0.00	0.09	233
1.98	0.01	0.57	0.64	0.05	356
2.02	0.02	0.79	0.79	0.06	233
2.29	0.06	1.65	0.32	0.13	105
2.35	0.03	0.53	0.10	0.04	105

Integration Results for ELS1 A, ELSD Signal

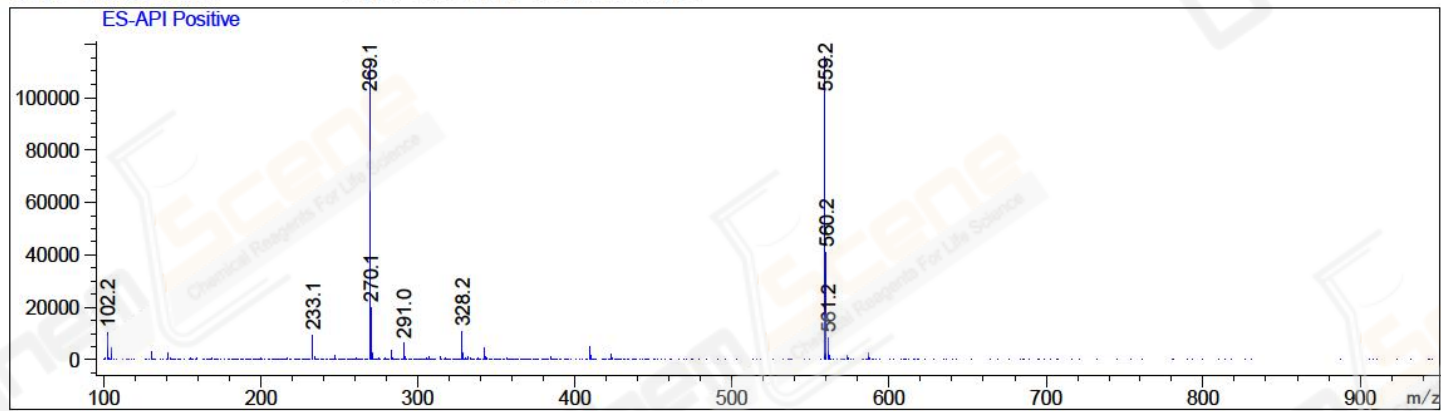
RetTim	Width	Area	Height	Area%	MS (+)
1.75	0.05	445.36	142.98	100.00	559

Integration Results for MSD1 TIC, MS File

RetTim	Width	Area	Height	Area%	MS (+)
1.71	0.06	4297859.00	1051466.13	100.00	559

Ret. Time: 1.71

<<<< POSITIVE SPECTRA >>>>



*** End of Report ***