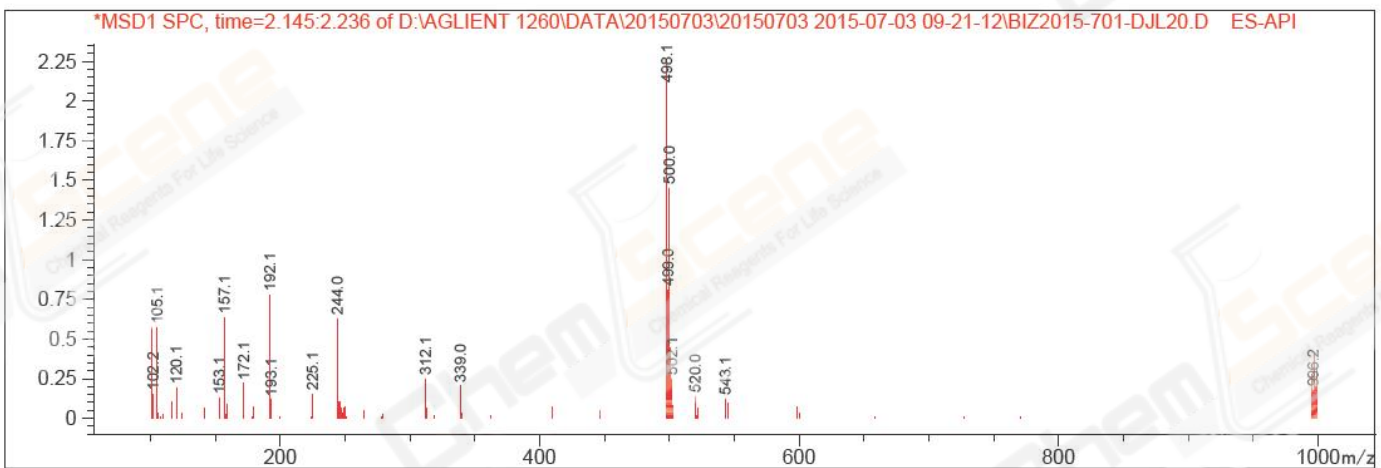
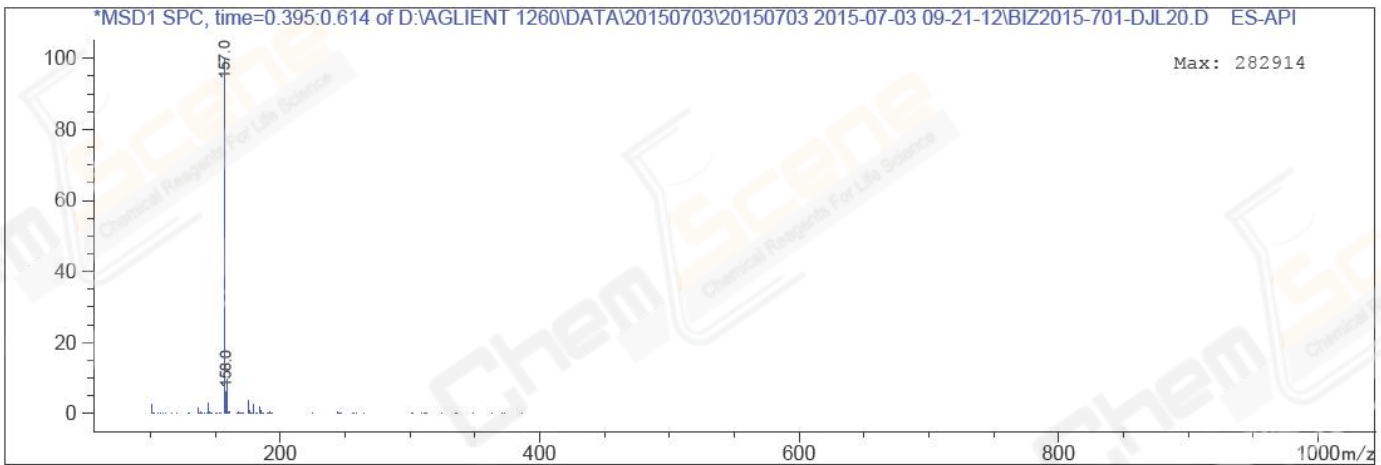






MS Signal: MSD1 TIC, MS File, ES-API, Pos, Scan, Frag: 50  
Spectra averaged over upper half of peaks.  
Noise Cutoff: 1000 counts.  
Reportable Ion Abundance: > 10%.

Retention Time (MS)	MS Area	Mol. Weight or Ion
0.439	9363335	157.00 I
2.190	166131	997.00 I
		501.05 I
		500.05 I
		499.05 I
		498.10 I
		244.00 I
		192.15 I
		157.05 I
		105.10 I
		101.10 I



\*\*\* End of Report \*\*\*