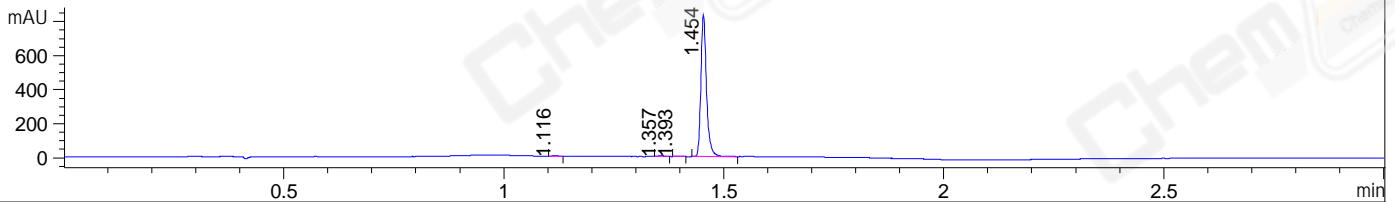
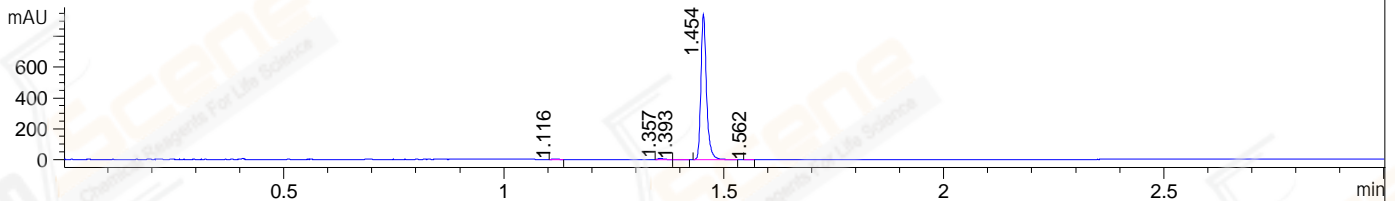


File ..\DATA\2020\20200510\951\CPK2020-509-16983.D Tgt Mass (CHM):  
 Injection Date : 10 May 20 11:16 am +0800 Seq. Line : 24  
 Sample Name : CPK2020-509-16983 Location : P1-D-08  
 Acq. Operator : ZJ\_1432 Inj : 1  
 Spec. Reported : MS Integration Inj Volume : 1 ul  
 Acq. Method : D:\Chem32\1\data\2020\20200510\951\1-POS-3MIN.M  
 Analysis Method : D:\CHEM32\1\DATA\2020\20200510\951\1-POS-3MIN.M  
 Catalog No : CS-0022  
 Method Info : Mobile Phase: A: water(0.01%TFA) B:ACN(0.01%TFA)  
 Gradient: 5% to 95%B within 1.3 min  
 Flow Rate :1.8ml/min  
 Column :SunFire C18, 4.6\*50mm,3.5um A-RP-607  
 Oven Temperature : 45□

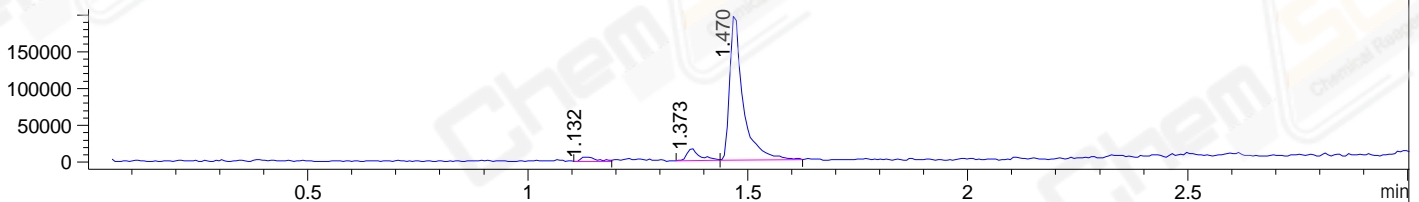
DAD1 B, Sig=214,4 Ref=off



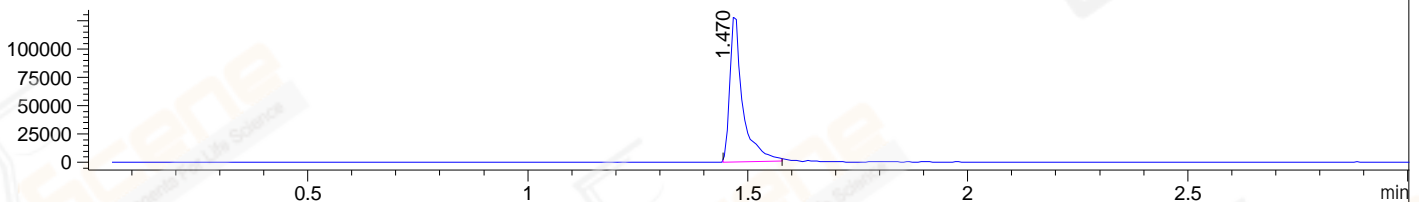
DAD1 C, Sig=254,4 Ref=off



MSD1 TIC, MS File ES-API, Pos, Scan, Frag: 70



Ion 442, MSD1 442, Target Mass 441 +H Positive, EIC=441.7:442.7



Integration Results for DAD1 B, Sig=214,4 Ref=off

RetTim	Width	Area	Height	Area%	MS (+)
1.12	0.01	3.66	4.40	0.49	347
1.36	0.01	5.08	6.51	0.68	424
1.39	0.01	0.87	1.05	0.12	424
1.45	0.01	735.08	836.62	98.71	442

Integration Results for DAD1 C, Sig=254,4 Ref=off

RetTim	Width	Area	Height	Area%	MS (+)
1.12	0.01	1.32	1.65	0.16	347
1.36	0.01	6.53	7.79	0.78	424
1.39	0.02	1.12	1.21	0.13	424
1.45	0.01	828.73	947.41	98.91	442
1.56	0.01	0.20	0.27	0.02	442

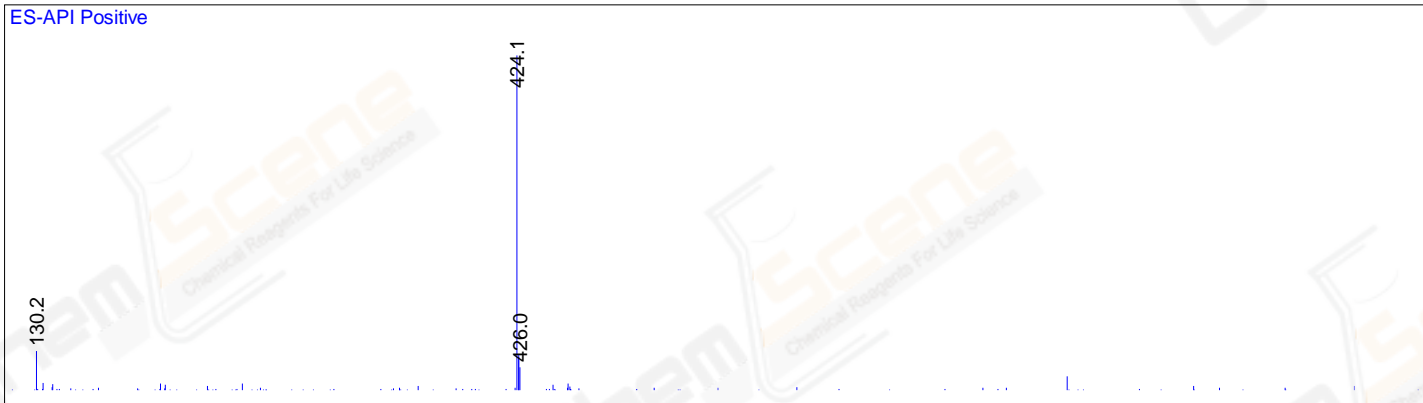
Integration Results for MSD1 TIC, MS File

RetTim	Width	Area	Height	Area%	MS (+)
--------	-------	------	--------	-------	--------

1.13	0.03	13608.15	5947.20	2.91	ND
1.37	0.03	33971.23	16656.88	7.27	424
1.47	0.03	419386.50	202547.88	89.81	442

Ret. Time: 1.37

ES-API Positive



Ret. Time: 1.47

ES-API Positive

