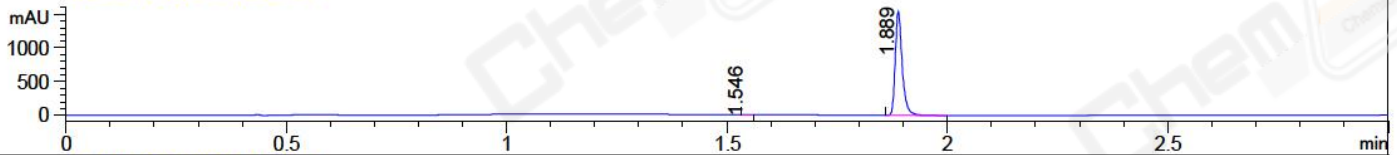
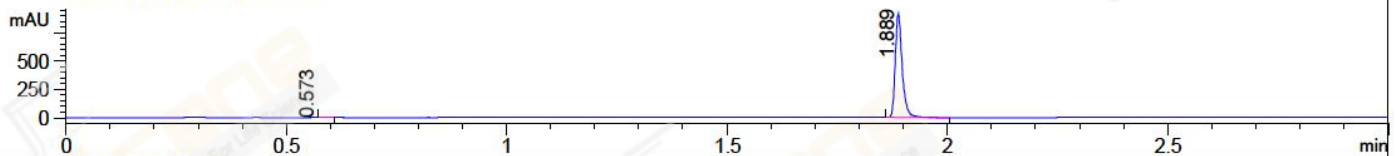


File ..\2018\20180412\20180412\CPK2018-412-17145.D Tgt Mass (CHM):
Injection Date : 12 Apr 18 7:56 pm +0800 Seq. Line : 117
Sample Name : CPK2018-412-17145 Location : P2-A-10
Acq. Operator : SYSTEM Inj : 1
Spec. Reported : MS Integration Inj Volume : 1 ul
Acq. Method : D:\LCMS03\Data\2018\20180412\20180412\1-POS-3MIN.M
Analysis Method : D:\LCMS03\Data\2018\20180412\20180412\1-POS-3MIN.M
Catalog No : CS-2597 Batch#17145
Method Info : Mobile Phase: A: water(0.01%TFA) B:ACN(0.01%TFA)
Gradient: 5% to 95%B within 1.3 min
Flow Rate :1.8ml/min
Column :SunFire C18, 4.6*50mm,3.5um A-RP-186
Oven Temperature : 45C

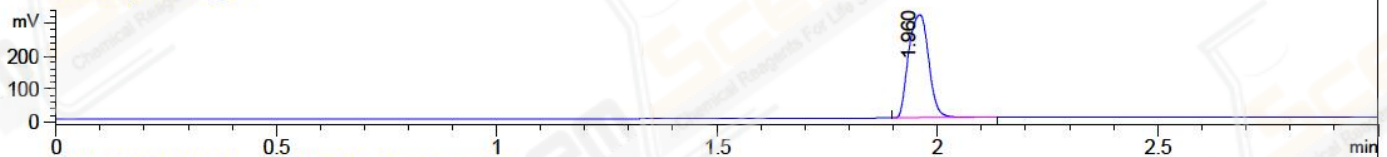
DAD1 A, Sig=214,4 Ref=off



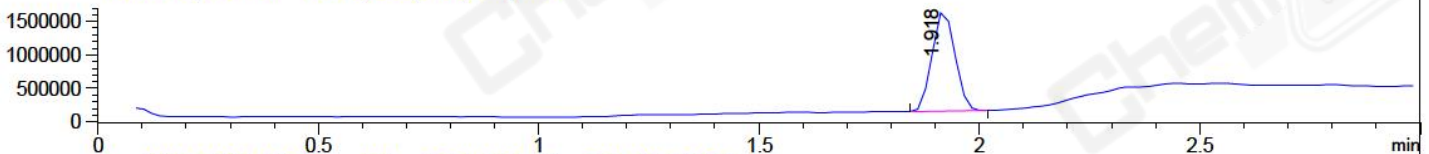
DAD1 B, Sig=254,4 Ref=off



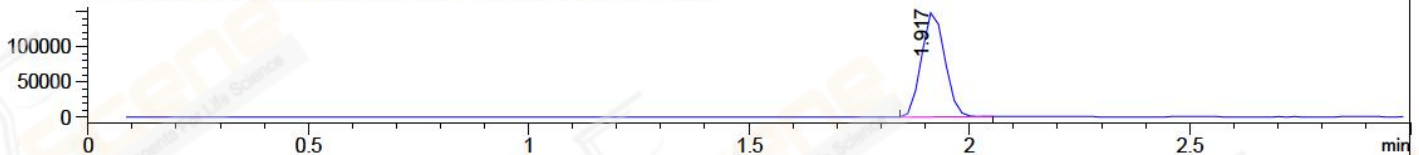
ELS1 A, ELSD Signal



MSD1 TIC, MS File ES-API, Pos, Scan, Frag: 70



Ion 416.8, MSD1 416.8, Target Mass 415.8 +H Positive, EIC=416.5:417.5



Integration Results for DAD1 A, Sig=214,4 Ref=off

RetTim	Width	Area	Height	Area%	MS (+)
1.55	0.01	0.44	0.55	0.03	102
1.89	0.02	1692.42	1536.73	99.97	416

Integration Results for DAD1 B, Sig=254,4 Ref=off

RetTim	Width	Area	Height	Area%	MS (+)
0.57	0.03	0.11	0.03	0.01	102
1.89	0.02	1010.47	916.85	99.99	416

Integration Results for ELS1 A, ELSD Signal

RetTim	Width	Area	Height	Area%	MS (+)
1.96	0.05	991.65	312.62	100.00	416

Integration Results for MSD1 TIC, MS File

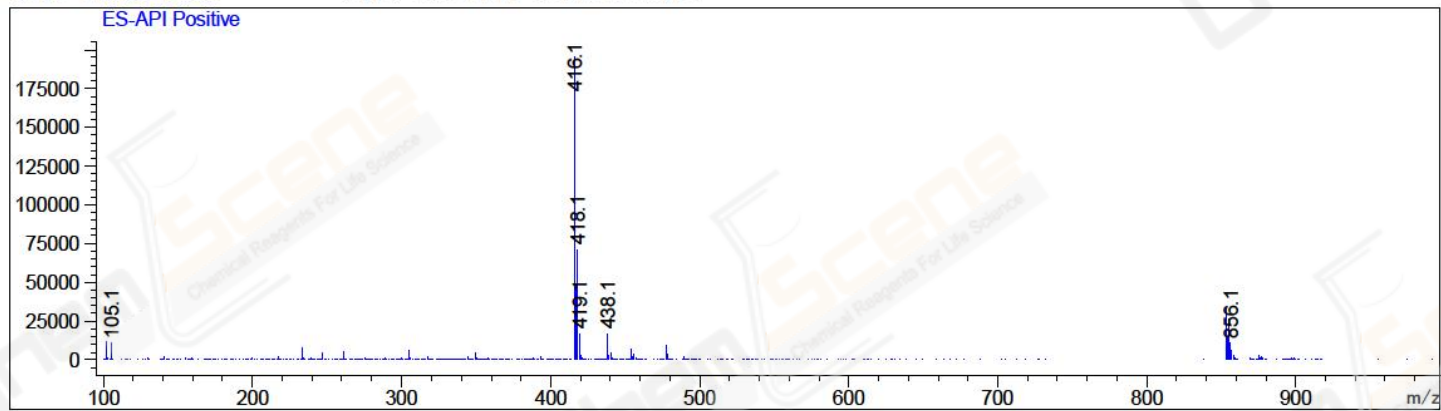
1.92 0.06 5434462.00 1499600.00 100.00 416



RetTim	Width	Area	Height	Area%	MS (+)
1.92	0.06	5434462.00	1499600.00	100.00	416

Ret. Time: 1.92

<<<< POSITIVE SPECTRA >>>>



*** End of Report ***