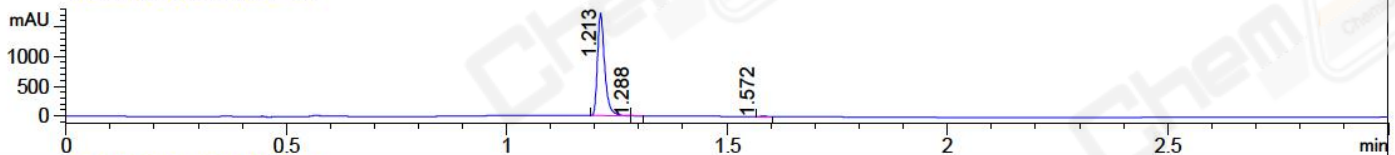
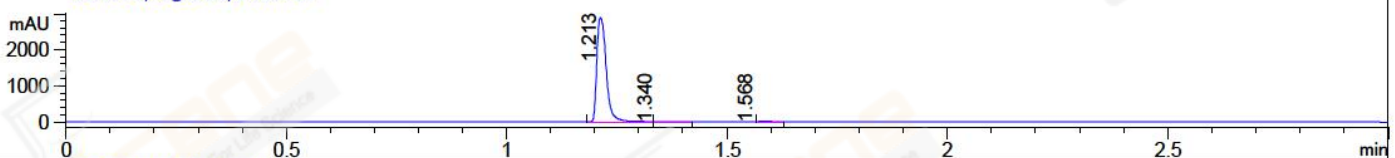


File ..018\20180515\20180515-2\CPK2018-514-17721.D Tgt Mass (CHM):  
Injection Date : 15 May 18 11:54 pm +0800 Seq. Line : 55  
Sample Name : CPK2018-514-17721 Location : P2-D-09  
Acq. Operator : SYSTEM Inj : 1  
Spec. Reported : MS Integration Inj Volume : 1 ul  
Acq. Method : D:\LCMS03\Data\2018\20180515\20180515-2\1-POS-3MIN.M  
Analysis Method : D:\LCMS03\Data\2018\20180515\20180515-2\1-POS-3MIN.M  
Catalog No : CS-4915 Batch#17721  
Method Info : Mobile Phase: A: water(0.01%TFA) B:ACN(0.01%TFA)  
Gradient: 5% to 95%B within 1.3 min  
Flow Rate :1.8ml/min  
Column :SunFire C18, 4.6\*50mm,3.5um A-RP-186  
Oven Temperature : 45C

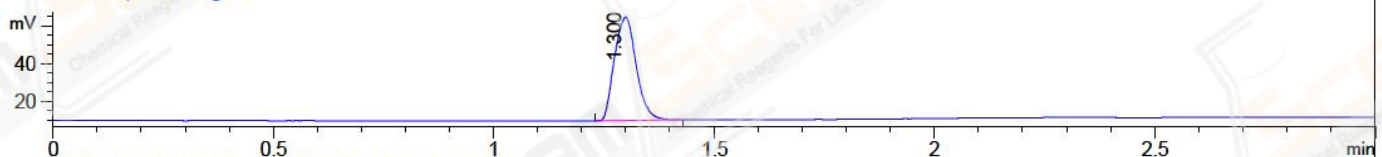
DAD1 A, Sig=214,4 Ref=off



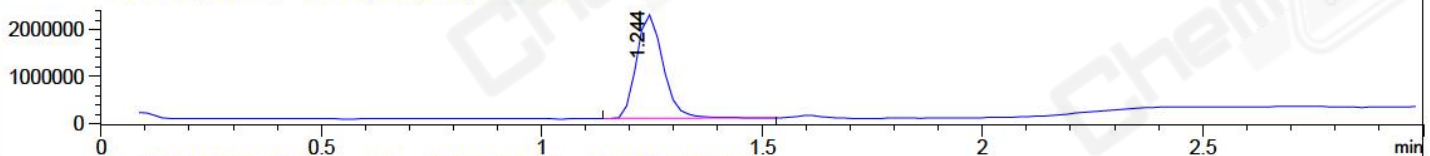
DAD1 B, Sig=254,4 Ref=off



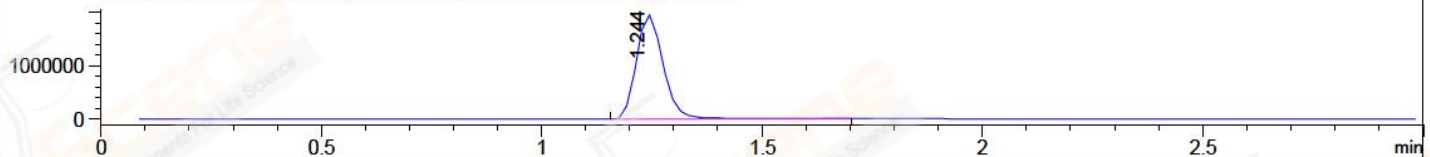
ELS1 A, ELSD Signal



MSD1 TIC, MS File ES-API, Pos, Scan, Frag: 70



Ion 195.2, MSD1 195.2, Target Mass 194.2 +H Positive, EIC=194.9:195.9



Integration Results for DAD1 A, Sig=214,4 Ref=off

RetTim	Width	Area	Height	Area%	MS (+)
1.21	0.02	1952.64	1720.57	99.50	195
1.29	0.02	3.23	2.85	0.16	195
1.57	0.04	6.59	-3.20	0.34	196

Integration Results for DAD1 B, Sig=254,4 Ref=off

RetTim	Width	Area	Height	Area%	MS (+)
1.21	0.02	4246.29	2890.70	99.49	195
1.34	0.05	3.69	1.22	0.09	195
1.57	0.02	17.92	0.45	0.42	196

Integration Results for ELS1 A, ELSD Signal

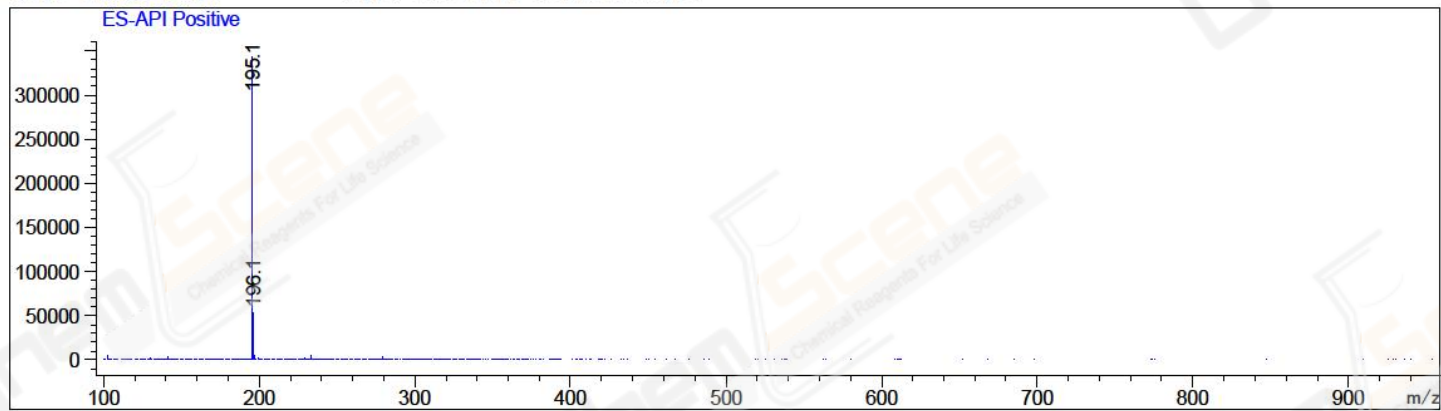
RetTim	Width	Area	Height	Area%	MS (+)
1.30	0.06	189.18	55.13	100.00	195

## Integration Results for MSD1 TIC, MS File

RetTim	Width	Area	Height	Area%	MS (+)
1.24	0.07	9308376.00	2203804.75	100.00	195

Ret. Time: 1.24

<<<< POSITIVE SPECTRA >>>>



\*\*\* End of Report \*\*\*