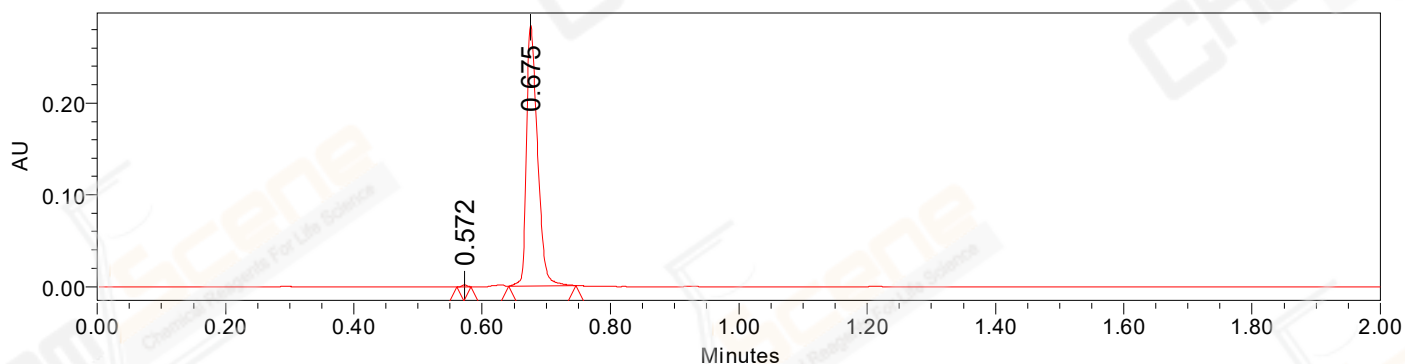


## SAMPLE INFORMATION

CAS NO.: 1948273-03-7  
Sample information: 2:E,7  
Vial: 1  
Injection #: 1  
Injection Volume: 0.30 ul  
Run Time: 2.8 Minutes  
Sample Set Name: 20220809

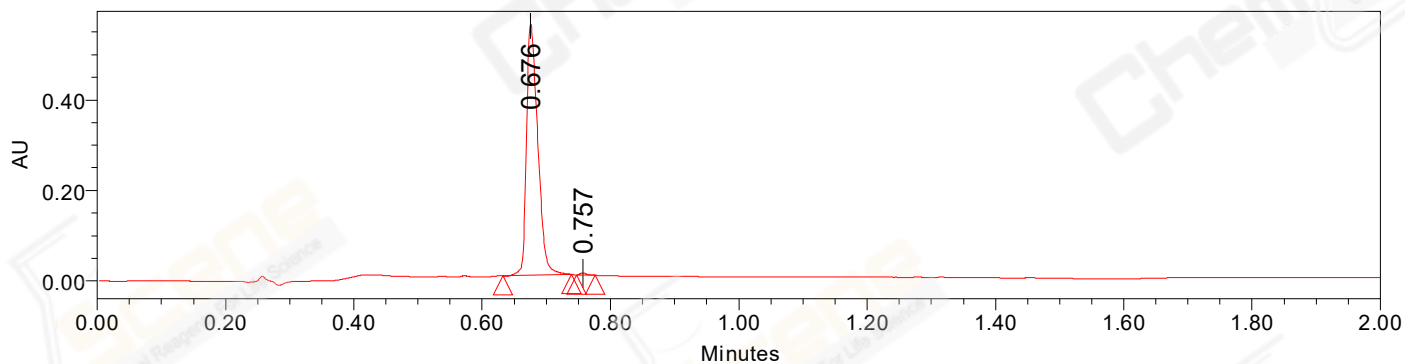
Acquired By: LY  
Date Acquired: 8/9/2022 11:07:52 AM CST  
Acq. Method Set: 1\_POS\_2MIN  
Date Processed: 8/9/2022 3:28:40 PM CST,  
Processing Method: PDA\_01, MS\_scan  
Channel Name: PDA Ch1 214nm@4.8nm, MS TIC,  
Column Name: A-RP-985

### Auto-Scaled Chromatogram



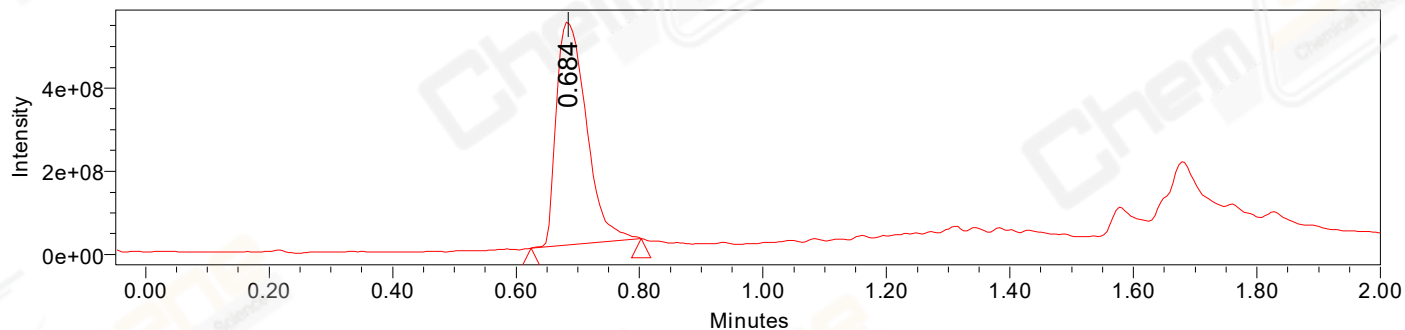
Processed Channel Descr. PDA Ch2 254nm@4.8nm

### Auto-Scaled Chromatogram



Processed Channel Descr. PDA Ch1 214nm@4.8nm

### Auto-Scaled Chromatogram



Processed Channel Descr. ACQ-SQD2 1: MS Scan MS TIC, Smoothed by 9 point Savitzky-Golay Filter., Time offset by -0.053 mins. (1: 150.00-1000.00 ES+, Centroid, CV=30)

Peak Results  
Channel Name: PDA Ch2 254nm@4.8nm

	RT	Width (sec)	Area	Height	% Area	Base Peak (Combined) (m/z)	Channel Name
1	0.572	1.300	1072	1884	0.32	152.99	PDA Ch2 254nm@4.8nm
2	0.675	6.350	338694	284043	99.68	274.23	PDA Ch2 254nm@4.8nm

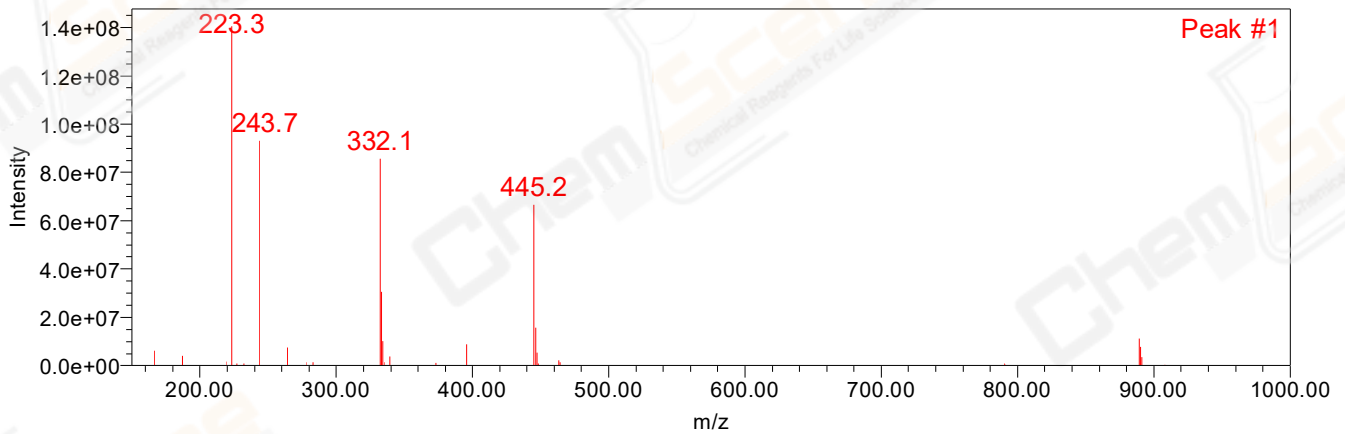
Peak Results  
Channel Name: PDA Ch1 214nm@4.8nm

	RT	Width (sec)	Area	Height	% Area	Base Peak (Combined) (m/z)	Channel Name
1	0.676	6.400	677580	554704	99.59	274.23	PDA Ch1 214nm@4.8nm
2	0.757	1.700	2759	4180	0.41	332.15	PDA Ch1 214nm@4.8nm

Peak Results  
Channel Name: MS TIC

	RT	Width (sec)	Area	Height	% Area	Base Peak (Combined) (m/z)	Channel Name
1	0.684	10.736	1809208016	537487196	100.00	223.25	MS TIC

Match Plot



Retention Time 0.684 Channel Name MS TIC