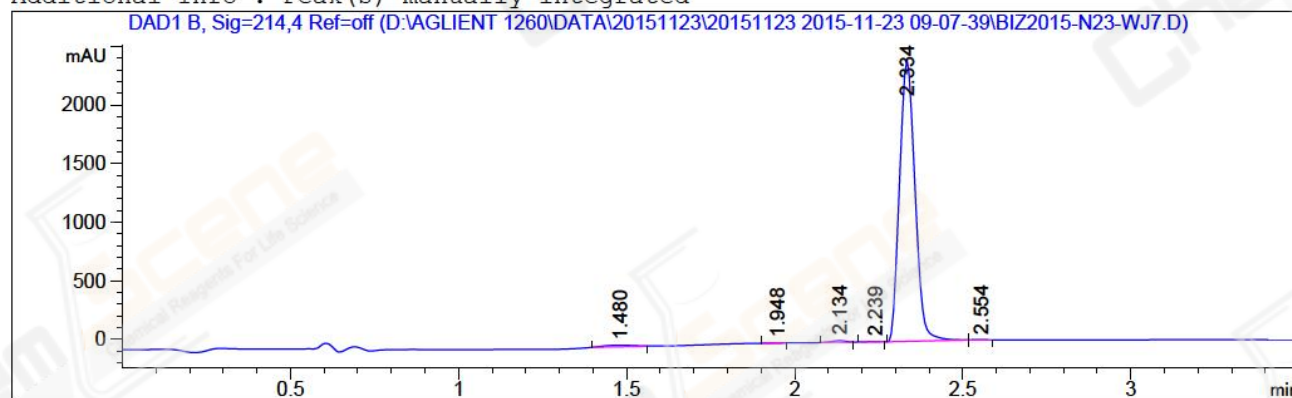


=====  
Acq. Operator : Yang Qian(LCMS-02) Seq. Line : 65  
Acq. Instrument : HY-LCMS-02 Location : P1-B-06  
Injection Date : 11/23/2015 3:11:18 PM Inj : 1  
Inj Volume : 3.000 µl  
Acq. Method : D:\AGLIENT 1260\DATA\20151123\20151123 2015-11-23 09-07-39\100-1000MS+3MIN-  
1.5\_(0.02%FA)-BD.M  
Last changed : 11/23/2015 9:07:39 AM by Yang Qian(LCMS-02)  
Analysis Method : D:\AGLIENT 1260\DATA\20151110\20151110 2015-11-10 11-24-47\100-1000MS+3MIN-  
1.5\_(0.02%FA)-BD.M (Sequence Method)  
Last changed : 11/24/2015 2:53:46 PM by Yang Qian(LCMS-02)  
(modified after loading)  
Method Info : Postive,MS:100-1000,Column ID:A-RP-132,40°C  
Catalog No : CS-1389 Batch#18686  
A-RP-134  
=====

Additional Info : Peak(s) manually integrated



=====  
Area Percent Report  
=====

Sorted By : Signal  
Multiplier : 1.0000  
Dilution : 1.0000  
Do not use Multiplier & Dilution Factor with ISTDs

Signal 1: DAD1 B, Sig=214,4 Ref=off

Peak #	RetTime [min]	Type	Width [min]	Area [mAU*s]	Height [mAU]	Area %
1	1.480	MM	0.1040	86.47757	13.86437	1.1083
2	1.948	MM	0.0589	8.36855	2.36691	0.1072
3	2.134	MM	0.0410	32.94980	13.40376	0.4223
4	2.239	MM	0.0450	7.57637	2.80883	0.0971
5	2.334	MM	0.0529	7659.34229	2411.21948	98.1596
6	2.554	MM	0.0441	8.23175	3.11247	0.1055
Totals :				7802.94632	2446.77583	

=====  
\*\*\* End of Report \*\*\*