

File ..22-08-15\ZBK14691-001-1-UPLC-MS-04-027347.D Tgt Mass (EZ):

Injection Date : 15-Aug-22, 13:15:27 Seq. Line : 0

Sample Name : ZBK14691-001-1 Location : P1-F-10

Acq. Operator : LY_2278 Inj : 1

Spec. Reported : MS Integration Inj Volume : 0.3 ul

Acq. Method : E:\Chem32\1\Methods\1-POS-UPLC5.0MIN(0.8ML)-(150-2000).M

Analysis Method : E:\CHEM32\1\METHODS\1-POS-UPLC5.0MIN(0.8ML)-(150-2000).M

CAS NO. : 2748220-93-9 WalkUp method: '1-POS-5MIN' Project: LD1430 Target:

Method Info : Mobile Phase: A: water(0.01%TFA) B:ACN(0.01%TFA)

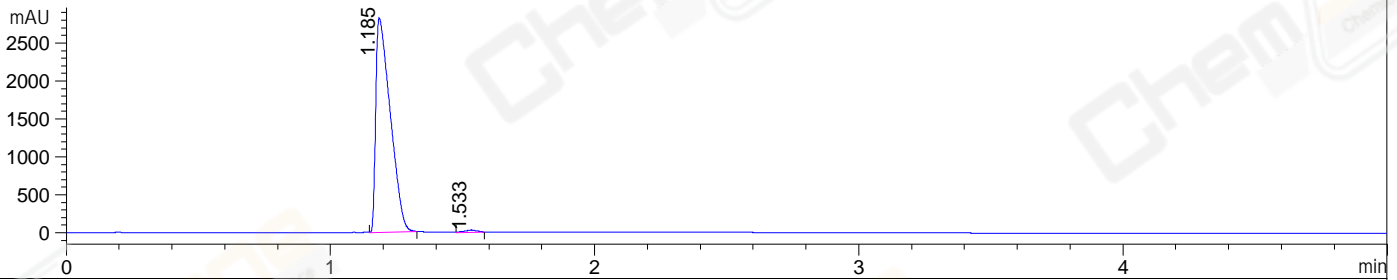
Gradient: 5% to 95%B within 3 min

Flow Rate : 0.8ml/min

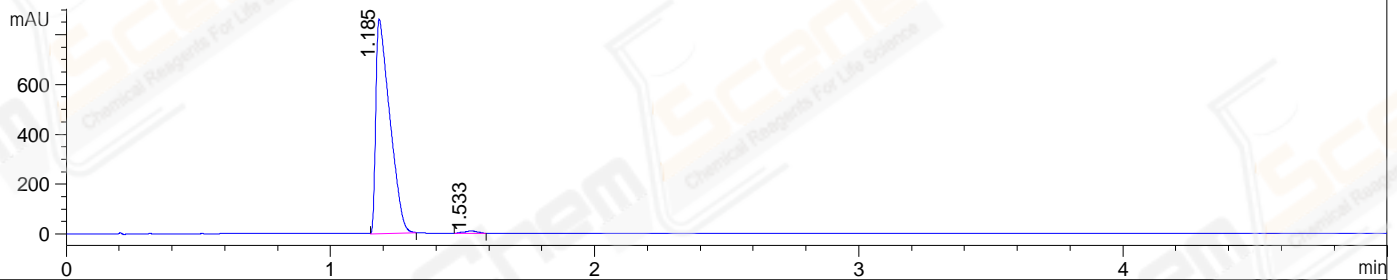
Column :Poroshell 120 EC- C18, 2.1*50mm,1.9um

Oven Temperature : 45C

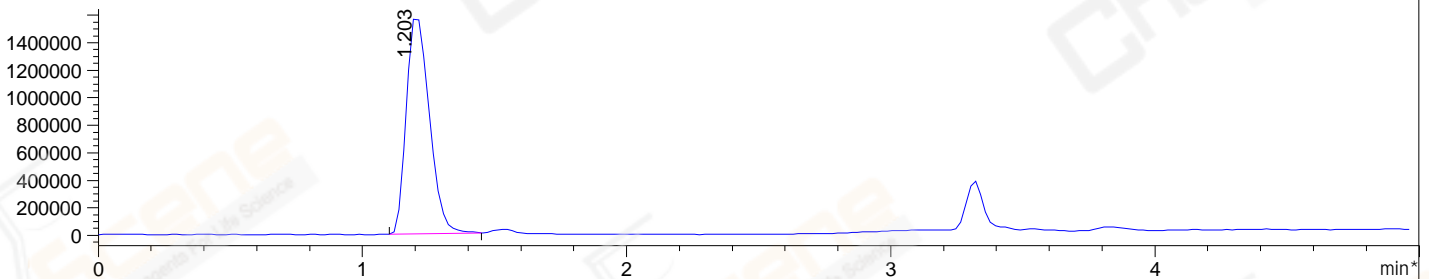
DAD1 A, Sig=214,4 Ref=off



DAD1 B, Sig=254,4 Ref=off



*MSD1 TIC, MS File ES-API, Pos, Scan, Frag: 70



Integration Results for DAD1 A, Sig=214,4 Ref=off

RetTim	Width	Area	Height	Area%	MS(+)
1.19	0.06	10759.94	2826.44	99.03	516
1.53	0.06	105.19	31.02	0.97	516

Integration Results for DAD1 B, Sig=254,4 Ref=off

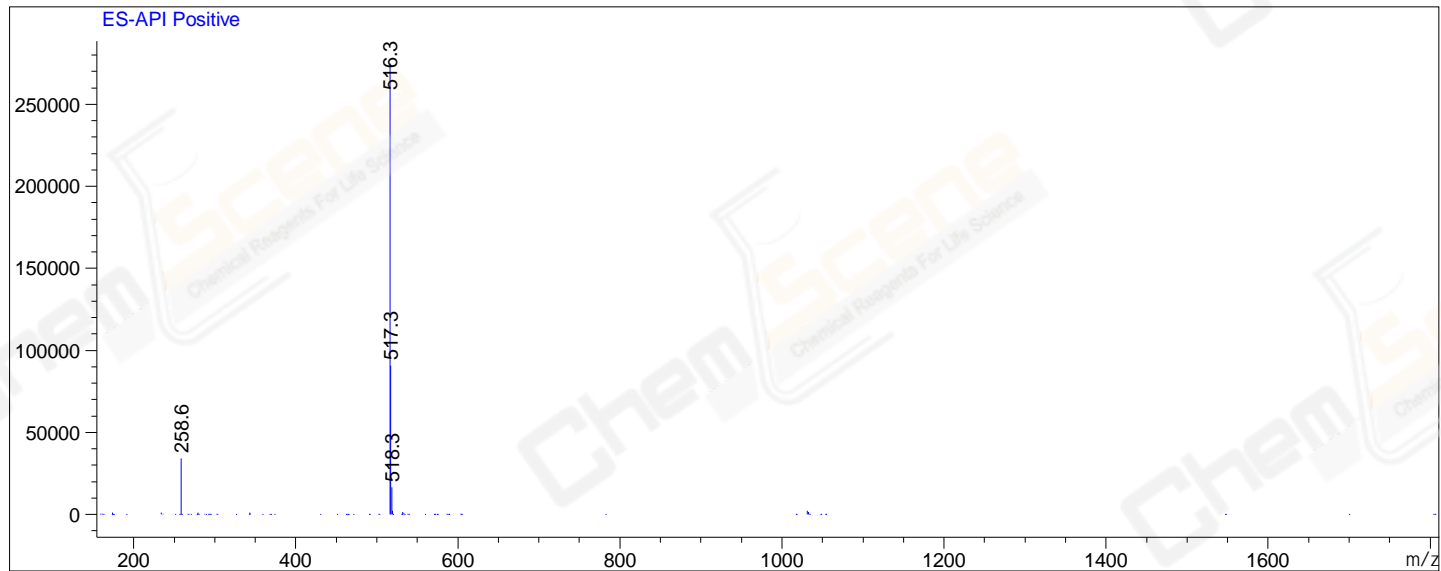
RetTim	Width	Area	Height	Area%	MS(+)
1.19	0.06	3163.24	861.41	98.77	516
1.53	0.06	39.40	10.98	1.23	516

Integration Results for MSD1 TIC, MS File

RetTim	Width	Area	Height	Area%	MS(+)
1.20	0.09	9548563.00	1602846.13	100.00	516

Ret. Time: 1.20

<<<< POSITIVE SPECTRA >>>>



*** End of Report ***