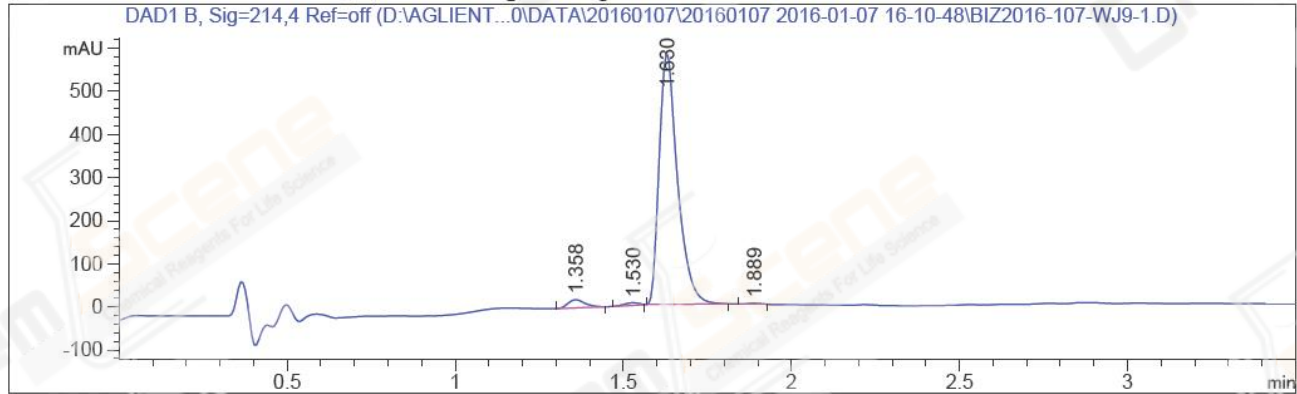


=====
Acq. Operator : Yang Qian(LCMS-02) Seq. Line : 11
Acq. Instrument : HY-LCMS-02 Location : P1-B-06
Injection Date : 1/7/2016 4:56:56 PM Inj : 1
Inj Volume : 3.000 µl
Different Inj Volume from Sample Entry Actual Inj Volume : 15.000 µl
Acq. Method : D:\AGLIENT 1260\DATA\20160107\20160107 2016-01-07 16-10-48\1000-2000MS+3MIN
_1.5(0.02%FA)-.M
Last changed : 1/7/2016 4:27:22 PM by Yang Qian(LCMS-02)
Analysis Method : D:\AGLIENT 1260\DATA\20160107\20160107 2016-01-07 16-10-48\1000-2000MS+3MIN
_1.5(0.02%FA)-.M (Sequence Method)
Last changed : 1/7/2016 5:06:49 PM by Yang Qian(LCMS-02)
(modified after loading)
Method Info : Postive,MS:1000-2000,Column ID:A-RP-132,40°C
Catalog No : CS-3579 Batch#19204
A-RP-151

Additional Info : Peak(s) manually integrated



=====
Area Percent Report
=====

Sorted By : Signal
Multiplier : 1.0000
Dilution : 1.0000
Do not use Multiplier & Dilution Factor with ISTDs

Signal 1: DAD1 B, Sig=214,4 Ref=off

Peak #	RetTime [min]	Type	Width [min]	Area [mAU*s]	Height [mAU]	Area %
1	1.358	MM	0.0580	67.40739	19.38654	2.9282
2	1.530	MM	0.0503	18.95383	6.28613	0.8234
3	1.630	MM	0.0627	2208.21655	587.33295	95.9249
4	1.889	MM	0.0509	7.44816	2.43971	0.3235

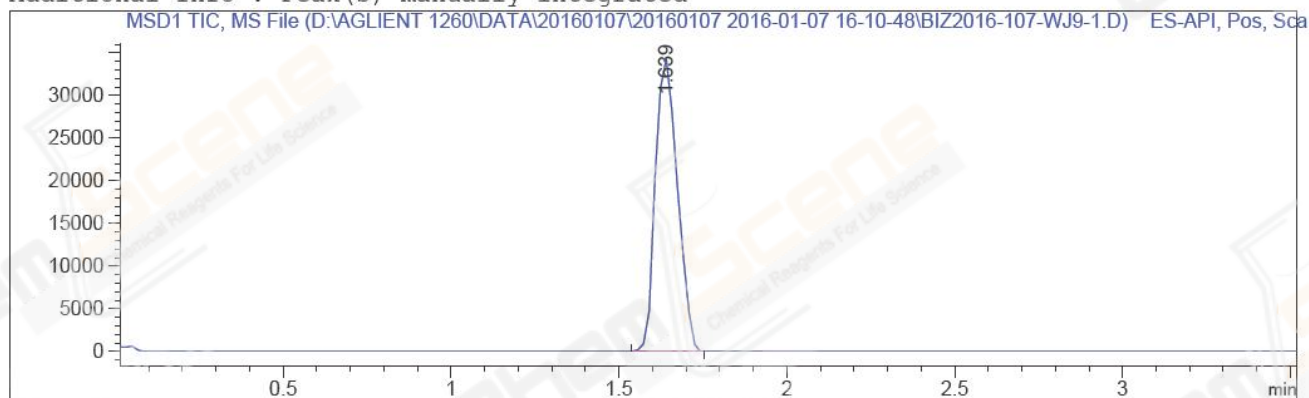
Totals : 2302.02593 615.44532

=====
*** End of Report ***

```
=====
Acq. Operator   : Yang Qian(LCMS-02)           Seq. Line : 11
Acq. Instrument : HY-LCMS-02                   Location  : P1-B-06
Injection Date  : 1/7/2016 4:56:56 PM          Inj       : 1
                                                    Inj Volume: 3.000 µl
Different Inj Volume from Sample Entry Actual Inj Volume : 15.000 µl
Acq. Method     : D:\AGLIENT 1260\DATA\20160107\20160107 2016-01-07 16-10-48\1000-2000MS+3MIN
                 _1.5(0.02%FA)-.M
Last changed    : 1/7/2016 4:27:22 PM by Yang Qian(LCMS-02)
Analysis Method : D:\AGLIENT 1260\DATA\20160107\20160107 2016-01-07 16-10-48\1000-2000MS+3MIN
                 _1.5(0.02%FA)-.M (Sequence Method)
Last changed    : 1/7/2016 5:03:41 PM by Yang Qian(LCMS-02)
                 (modified after loading)
Method Info     : Postive,MS:1000-2000,Column ID:A-RP-132,40°C

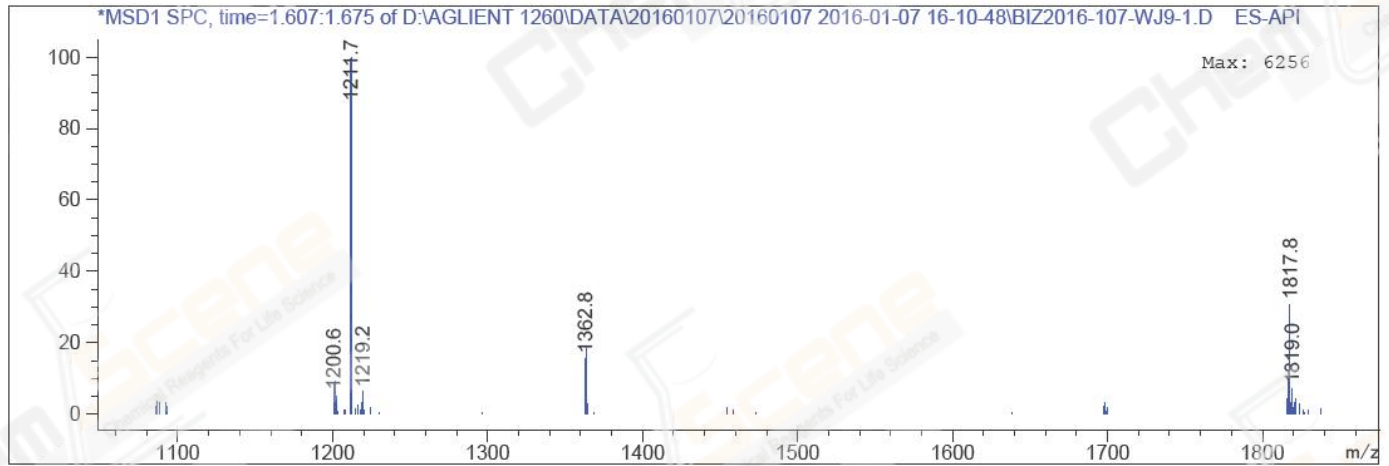
Catalog No     : CS-3579 Batch#19204
                 A-RP-151
=====
```

Additional Info : Peak(s) manually integrated



MS Signal: MSD1 TIC, MS File, ES-API, Pos, Scan, Frag: 50
Spectra averaged over upper half of peaks.
Noise Cutoff: 1000 counts.
Reportable Ion Abundance: > 10%.

Retention Time (MS)	MS Area	Mol. Weight or Ion
1.639	157547	1817.75 I
		1817.10 I
		1363.50 I
		1212.15 I
		1211.65 I



*** End of Report ***