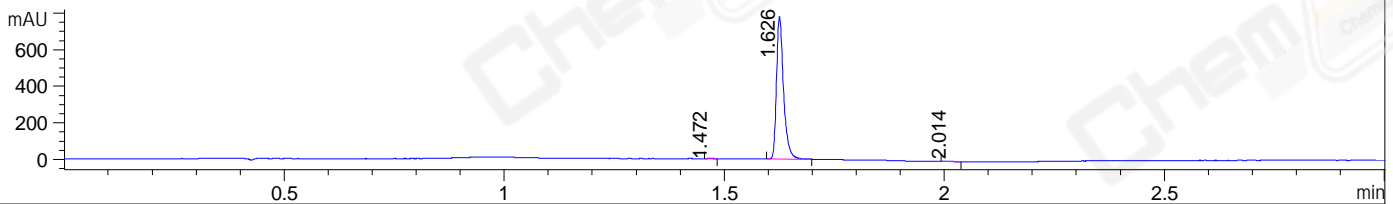
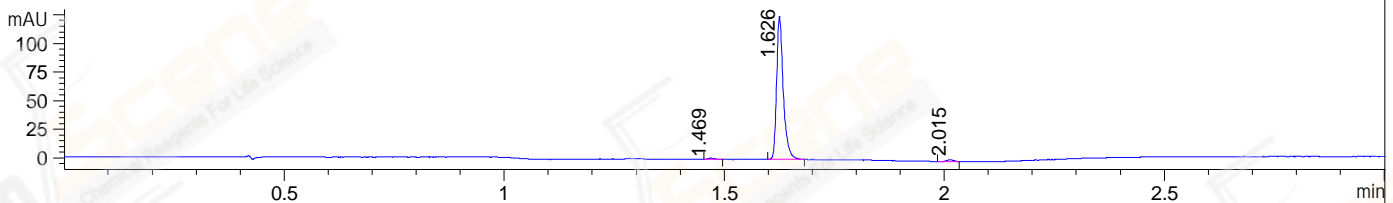


File ..DATA\2019\20191111\758\CPK2019-N07-19223-.D Tgt Mass (CHM):
Injection Date : 11 Nov 19 1:46 pm +0800 Seq. Line : 58
Sample Name : CPK2019-N07-19223 Location : P1-C-08
Acq. Operator : ZJ_1432 Inj : 1
Spec. Reported : MS Integration Inj Volume : 0.5 ul
Acq. Method : D:\Chem32\1\data\2019\20191111\758\1-POS-3MIN.M
Analysis Method : D:\CHEM32\1\DATA\2019\20191111\758\1-POS-3MIN.M
Catalog No : CS-5337 Batch#19223
Method Info : Mobile Phase: A: water(0.01%TFA) B:ACN(0.01%TFA)
Gradient: 5% to 95%B within 1.3 min
Flow Rate :1.8ml/min
Column :SunFire C18, 4.6*50mm,3.5um A-RP-433
Oven Temperature : 45□

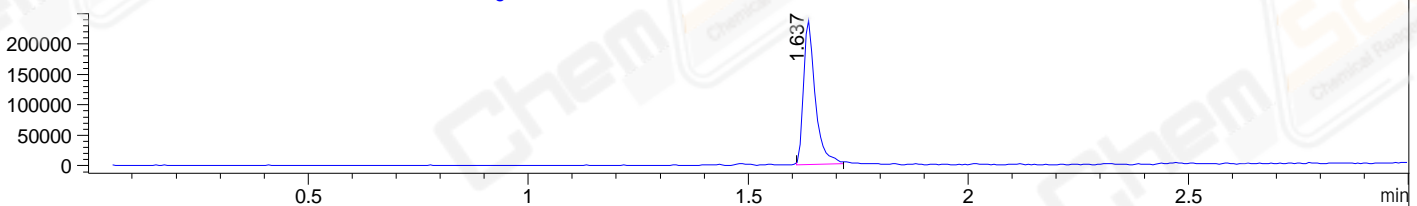
DAD1 B, Sig=214,4 Ref=off



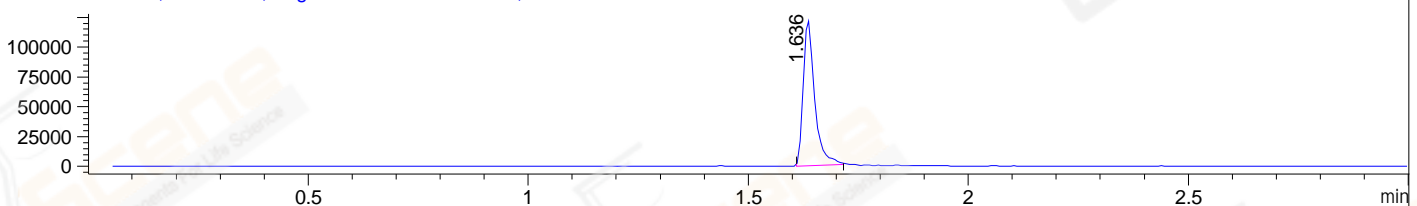
DAD1 C, Sig=254,4 Ref=off



MSD1 TIC, MS File ES-API, Pos, Scan, Frag: 70



Ion 420, MSD1 420, Target Mass 419 +H Positive, EIC=419.7:420.7



Integration Results for DAD1 B, Sig=214,4 Ref=off

RetTim	Width	Area	Height	Area%	MS (+)
1.47	0.01	1.13	1.31	0.13	ND
1.63	0.02	868.90	781.31	99.58	420
2.01	0.02	2.52	1.88	0.29	ND

Integration Results for DAD1 C, Sig=254,4 Ref=off

RetTim	Width	Area	Height	Area%	MS (+)
1.47	0.02	1.06	1.01	0.79	ND
1.63	0.02	131.38	125.25	97.98	420
2.01	0.02	1.65	1.52	1.23	ND

Integration Results for MSD1 TIC, MS File

RetTim	Width	Area	Height	Area%	MS (+)
1.64	0.03	440051.69	238079.14	100.00	420

Ret. Time: 1.64

<<<< POSITIVE SPECTRA >>>>

ES-API Positive

