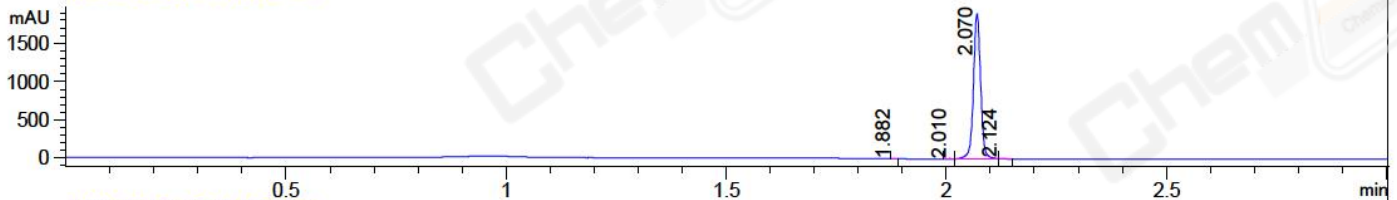
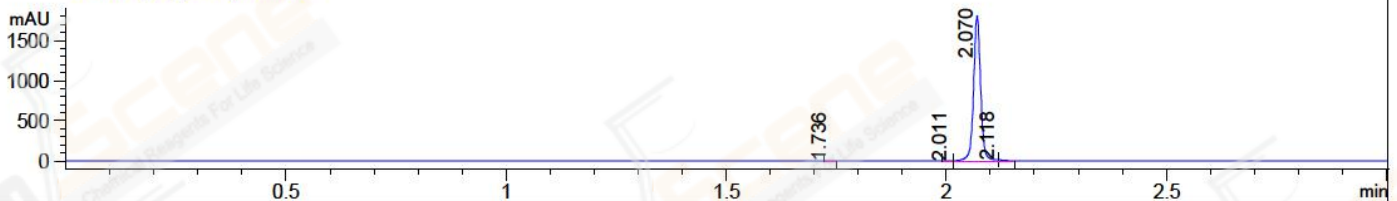


File ..\DATA\2018\20181109\490\CPK2018-N08-19542.D Tgt Mass (CHM):
 Injection Date : 9 Nov 18 12:33 pm +0800 Seq. Line : 22
 Sample Name : CPK2018-N08-19542 Location : P2-F-01
 Acq. Operator : LQ_1052 Inj : 1
 Spec. Reported : MS Integration Inj Volume : 1 ul
 Acq. Method : D:\Chem32\1\data\2018\20181109\490\1-POS-3MIN-1.M
 Analysis Method : D:\CHEM32\1\DATA\2018\20181109\490\1-POS-3MIN-1.M
 Catalog No : CS-5386 Batch#19542 A-RP-314
 Method Info : Mobile Phase: A: water(0.01%TFA) B:ACN(0.01%TFA)
 Gradient: 5% to 95%B within 1.3 min
 Flow Rate :1.8ml/min
 Column :SunFire C18, 4.6*50mm,3.5um A-RP-314
 Oven Temperature : 45□

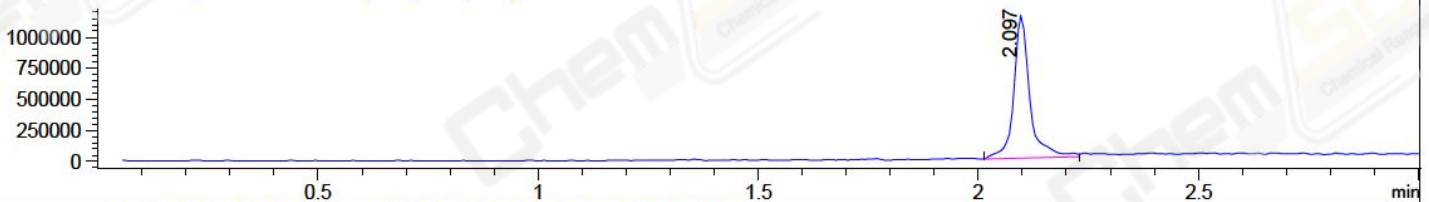
DAD1 B, Sig=214,4 Ref=off



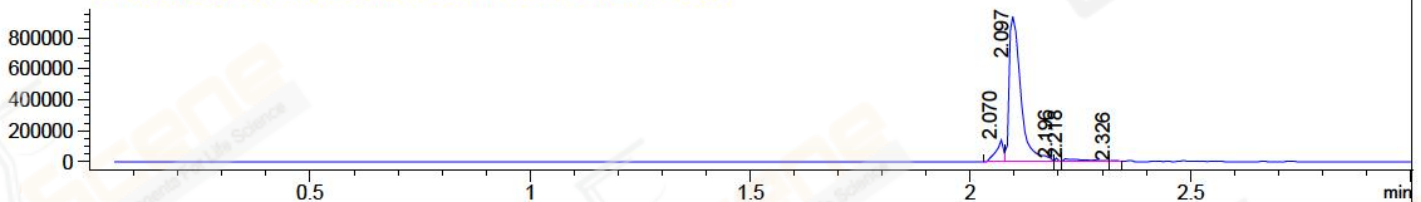
DAD1 C, Sig=254,4 Ref=off



MSD1 TIC, MS File ES-API, Pos, Scan, Frag: 70



Ion 422.5, MSD1 422.5, Target Mass 421.5 +H Positive, EIC=422.2:423.2



Integration Results for DAD1 B, Sig=214,4 Ref=off

RetTim	Width	Area	Height	Area%	MS (+)
1.88	0.01	0.48	0.81	0.02	141
2.01	0.02	4.98	4.62	0.23	141
2.07	0.02	2177.11	1900.68	99.21	422
2.12	0.02	11.98	10.94	0.55	422

Integration Results for DAD1 C, Sig=254,4 Ref=off

RetTim	Width	Area	Height	Area%	MS (+)
1.74	0.02	1.17	1.22	0.06	141
2.01	0.02	5.31	5.17	0.26	141
2.07	0.02	2037.56	1813.49	98.99	422
2.12	0.02	14.23	12.49	0.69	422

Integration Results for MSD1 TIC, MS File

RetTim	Width	Area	Height	Area%	MS (+)
2.10	0.04	2932108.50	1147262.75	100.00	422

Ret. Time: 2.10

<<<< POSITIVE SPECTRA >>>>

ES-API Positive

