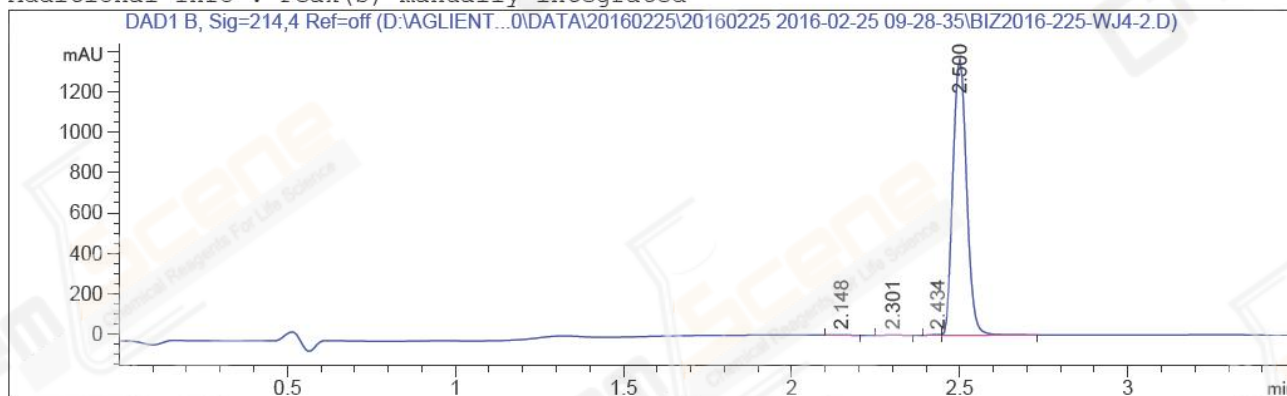


=====  
Acq. Operator : Wang Ke Cheng(LCMS-02) Seq. Line : 52  
Acq. Instrument : HY-LCMS-02 Location : P1-C-07  
Injection Date : 2/25/2016 3:55:54 PM Inj : 1  
Inj Volume : 3.000 µl  
Different Inj Volume from Sample Entry Actual Inj Volume : 5.000 µl  
Acq. Method : D:\AGLIENT 1260\DATA\20160225\20160225 2016-02-25 09-28-35\100-1000MS+3MIN-1.5\_(0.02%FA).M  
Last changed : 2/25/2016 9:28:35 AM by Wang Ke Cheng(LCMS-02)  
Analysis Method : D:\AGLIENT 1260\DATA\20160225\20160225 2016-02-25 09-28-35\100-1000MS+3MIN-1.5\_(0.02%FA).M (Sequence Method)  
Last changed : 2/25/2016 4:05:45 PM by Wang Ke Cheng(LCMS-02)  
(modified after loading)  
Method Info : Postive,MS:100-1000,Column ID:A-RP-132,40°C  
Catalog No : CS-5386 Batch#19576  
A-RP-134

Additional Info : Peak(s) manually integrated



=====  
Area Percent Report  
=====

Sorted By : Signal  
Multiplier : 1.0000  
Dilution : 1.0000  
Do not use Multiplier & Dilution Factor with ISTDs

Signal 1: DAD1 B, Sig=214,4 Ref=off

Peak #	RetTime [min]	Type	Width [min]	Area [mAU*s]	Height [mAU]	Area %
1	2.148	MM	0.0581	3.54170	1.01572	0.0904
2	2.301	MM	0.0564	4.15530	1.22739	0.1061
3	2.434	MF	0.0385	8.01121	3.46688	0.2046
4	2.500	FM	0.0472	3900.09277	1378.41199	99.5989

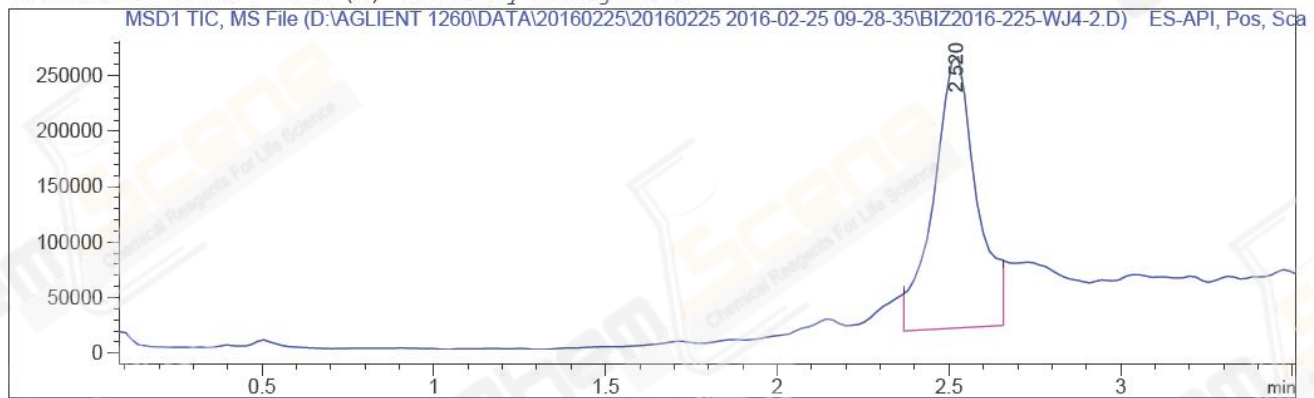
Totals : 3915.80097 1384.12198

=====  
\*\*\* End of Report \*\*\*

```
=====
Acq. Operator   : Wang Ke Cheng(LCMS-02)           Seq. Line :   52
Acq. Instrument : HY-LCMS-02                       Location  : P1-C-07
Injection Date  : 2/25/2016 3:55:54 PM             Inj       :    1
                                                    Inj Volume: 3.000 µl
Different Inj Volume from Sample Entry Actual Inj Volume : 5.000 µl
Acq. Method     : D:\AGLIENT 1260\DATA\20160225\20160225 2016-02-25 09-28-35\100-1000MS+3MIN-
                  1.5_(0.02%FA).M
Last changed    : 2/25/2016 9:28:35 AM by Wang Ke Cheng(LCMS-02)
Analysis Method : D:\AGLIENT 1260\DATA\20160225\20160225 2016-02-25 09-28-35\100-1000MS+3MIN-
                  1.5_(0.02%FA).M (Sequence Method)
Last changed    : 2/25/2016 4:04:15 PM by Wang Ke Cheng(LCMS-02)
                  (modified after loading)
Method Info     : Postive,MS:100-1000,Column ID:A-RP-132,40°C

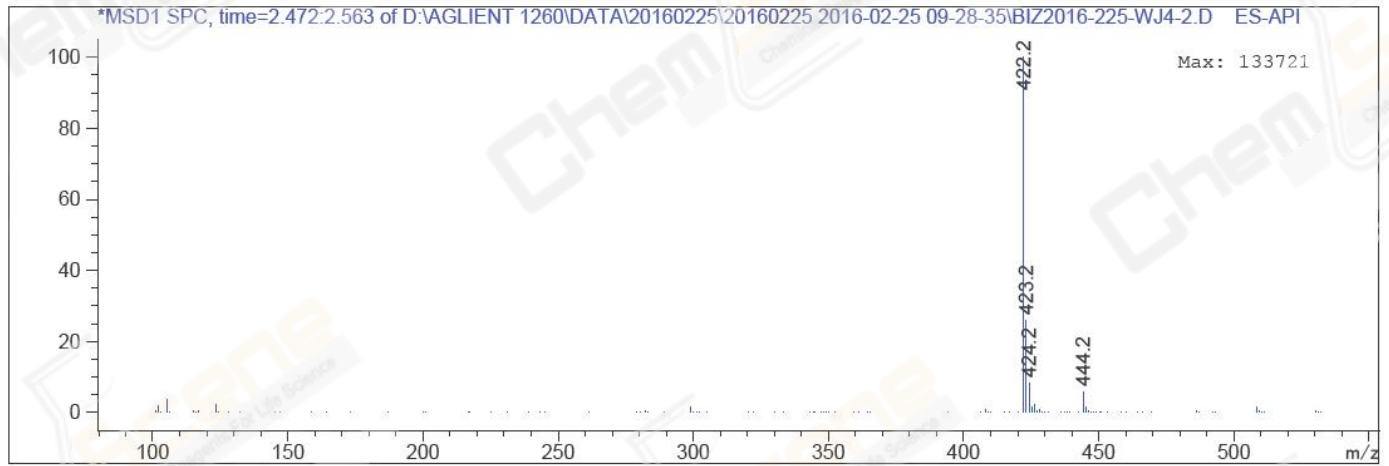
Catalog No      : CS-5386 Batch#19576
                  A-RP-134
=====
```

Additional Info : Peak(s) manually integrated



MS Signal: MSD1 TIC, MS File, ES-API, Pos, Scan, Frag: 50  
Spectra averaged over upper half of peaks.  
Noise Cutoff: 1000 counts.  
Reportable Ion Abundance: > 10%.

Retention Time (MS)	MS Area	Mol. Weight or Ion
2.520	2123959	423.20 I
		422.20 I



\*\*\* End of Report \*\*\*