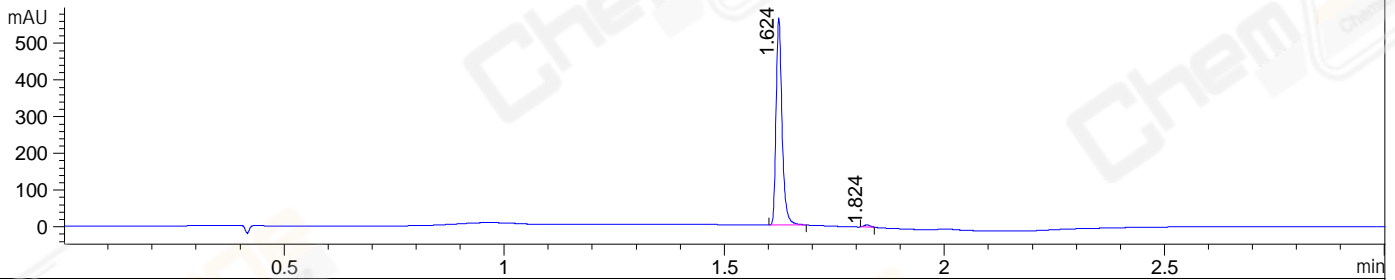
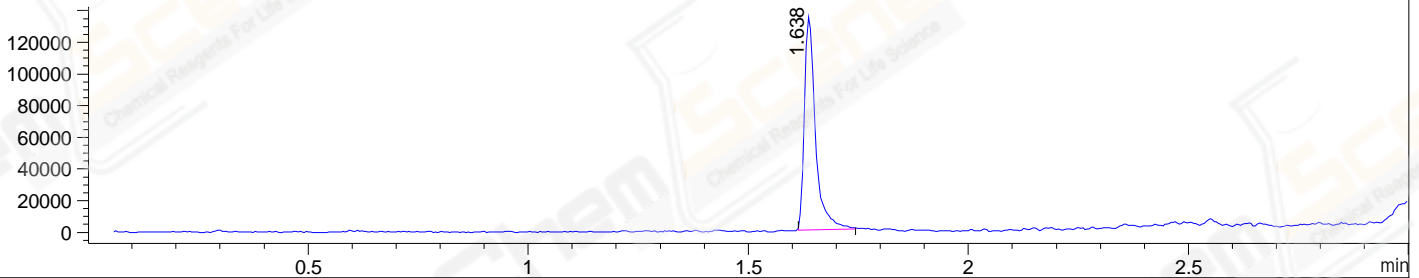


File ..DATA\2021\20210126\1250\CPK2021-125-19583.D Tgt Mass (CHM):
 Injection Date : 26 Jan 21 8:53 pm +0800 Seq. Line : 125
 Sample Name : CPK2021-125-19583 Location : P1-D-05
 Acq. Operator : yrz_1364 Inj : 1
 Spec. Reported : MS Integration Inj Volume : 1 ul
 Acq. Method : D:\Chem32\1\data\2021\20210126\1250\1-POS-3MIN.M
 Analysis Method : D:\CHEM32\1\DATA\2021\20210126\1250\1-POS-3MIN.M
 CAS NO. : 900510-03-4
 Method Info : Mobile Phase: A: water(0.01%TFA) B:ACN(0.01%TFA)
 Gradient: 5% to 95%B within 1.3 min
 Flow Rate :1.8ml/min
 Column :SunFire C18, 4.6*50mm,3.5um A-RP-698

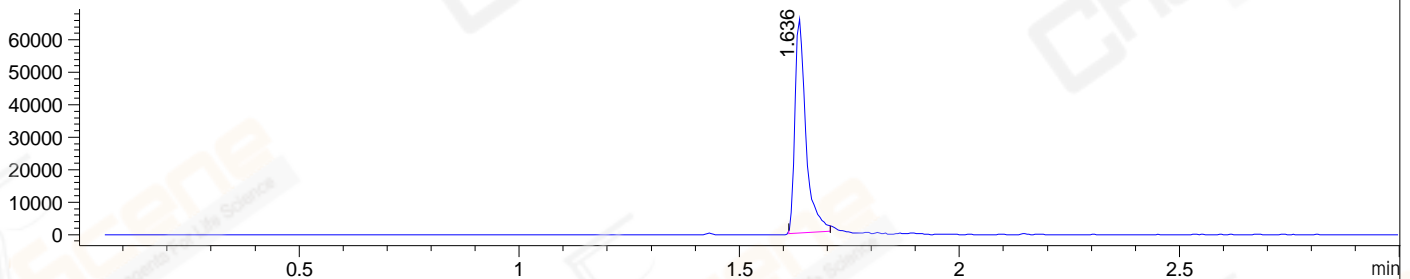
DAD1 B, Sig=214,4 Ref=off



MSD1 TIC, MS File ES-API, Pos, Scan, Frag: 70



Ion 420, MSD1 420, Target Mass 419 +H Positive, EIC=419.7:420.7



Integration Results for DAD1 B, Sig=214,4 Ref=off

| RetTim | Width | Area | Height | Area% | MS(+) |
|--------|-------|--------|--------|-------|-------|
| 1.62 | 0.02 | 533.71 | 564.77 | 98.89 | 420 |
| 1.82 | 0.02 | 5.99 | 6.19 | 1.11 | ND |

Integration Results for MSD1 TIC, MS File

| RetTim | Width | Area | Height | Area% | MS(+) |
|--------|-------|-----------|-----------|--------|-------|
| 1.64 | 0.03 | 238062.64 | 134954.86 | 100.00 | 420 |

Ret. Time: 1.64

<<<< POSITIVE SPECTRA >>>>

ES-API Positive

