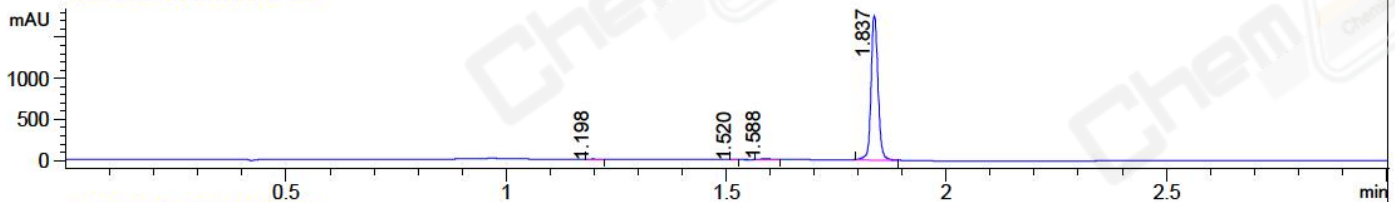


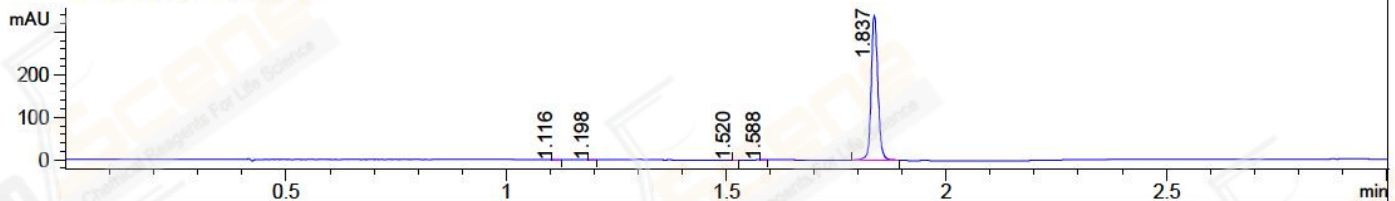
File ..\DATA\2018\20181031\472\CPK2018-030-19701.D Tgt Mass (CHM):

Injection Date : 31 Oct 18 10:42 am +0800 Seq. Line : 15  
 Sample Name : CPK2018-030-19701 Location : P1-C-01  
 Acq. Operator : LQ\_1052 Inj : 1  
 Spec. Reported : MS Integration Inj Volume : 1 ul  
 Acq. Method : D:\Chem32\1\data\2018\20181031\472\1-POS-3MIN-1.M  
 Analysis Method : D:\CHEM32\1\DATA\2018\20181031\472\1-POS-3MIN-1.M  
 Catalog No : CS-5427 Batch#19701 A-RP-314  
 Method Info : Mobile Phase: A: water(0.01%TFA) B:ACN(0.01%TFA)  
 Gradient: 5% to 95%B within 1.3 min  
 Flow Rate :1.8ml/min  
 Column :SunFire C18, 4.6\*50mm,3.5um A-RP-314  
 Oven Temperature : 45□

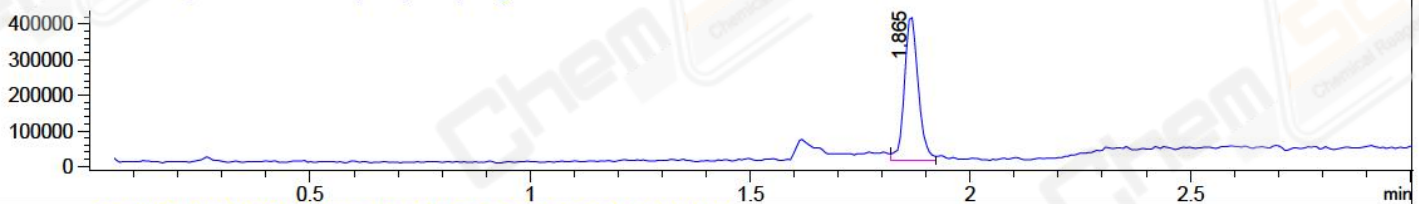
DAD1 B, Sig=214,4 Ref=off



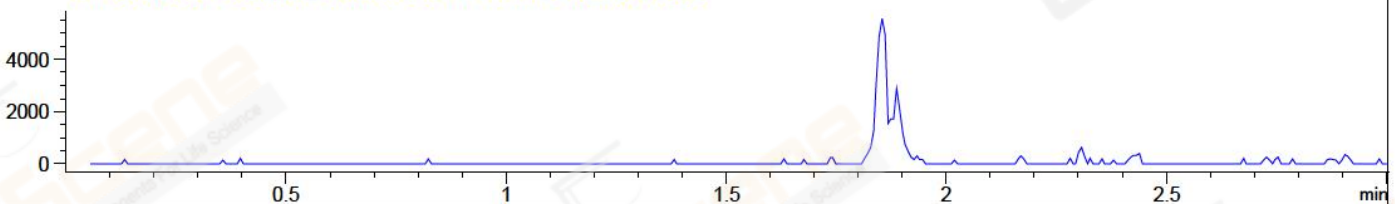
DAD1 C, Sig=254,4 Ref=off



MSD1 TIC, MS File ES-API, Pos, Scan, Frag: 70



Ion 428.5, MSD1 428.5, Target Mass 427.5 +H Positive, EIC=428.2:429.2



Integration Results for DAD1 B, Sig=214,4 Ref=off

RetTim	Width	Area	Height	Area%	MS (+)
1.20	0.02	6.41	6.49	0.33	202
1.52	0.01	0.59	0.92	0.03	324
1.59	0.02	16.01	12.62	0.82	174
1.84	0.02	1927.31	1758.27	98.82	387

Integration Results for DAD1 C, Sig=254,4 Ref=off

RetTim	Width	Area	Height	Area%	MS (+)
1.12	0.01	0.38	0.52	0.11	202
1.20	0.01	0.46	0.57	0.13	202
1.52	0.01	0.10	0.22	0.03	324
1.59	0.01	0.27	0.46	0.08	324
1.84	0.02	358.72	340.30	99.66	387

Integration Results for MSD1 TIC, MS File

RetTim	Width	Area	Height	Area%	MS (+)
--------	-------	------	--------	-------	--------

1.86      0.03      879596.19      405790.88      100.00      387

Ret. Time: 1.86

<<<< POSITIVE SPECTRA >>>>

ES-API Positive

