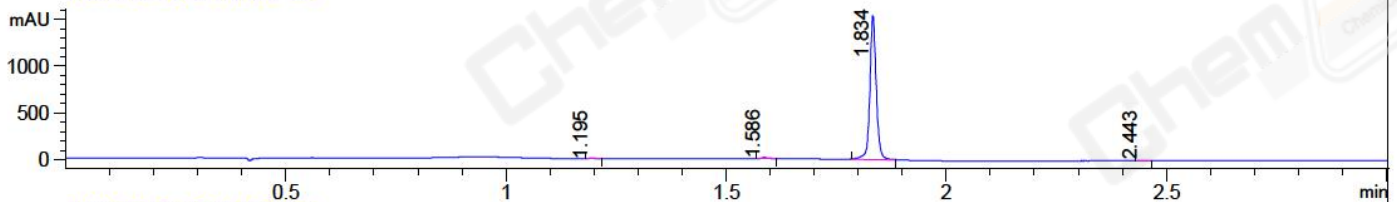
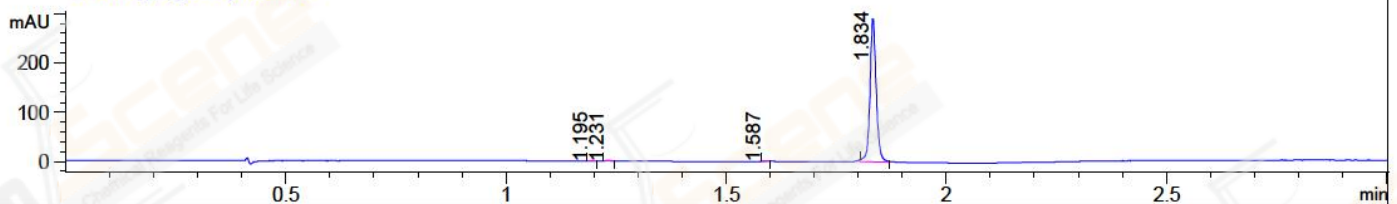


File ..\DATA\2018\20180810\356\CPK2018-810-19732.D Tgt Mass (CHM):  
Injection Date : 10 Aug 18 6:22 pm +0800 Seq. Line : 19  
Sample Name : CPK2018-810-19732 Location : P2-E-03  
Acq. Operator : LQ\_1052 Inj : 1  
Spec. Reported : MS Integration Inj Volume : 1 ul  
Acq. Method : D:\Chem32\1\data\2018\20180810\356\1-POS-3MIN-1.M  
Analysis Method : D:\CHEM32\1\DATA\2018\20180810\356\1-POS-3MIN-1.M  
Catalog No : CS-5427 Batch#19732 A-RP-314  
Method Info : Mobile Phase: A: water(0.01%TFA) B:ACN(0.01%TFA)  
Gradient: 5% to 95%B within 1.3 min  
Flow Rate : 1.8ml/min  
Column : SunFire C18, 4.6\*50mm, 3.5um A-RP-314  
Oven Temperature : 45□

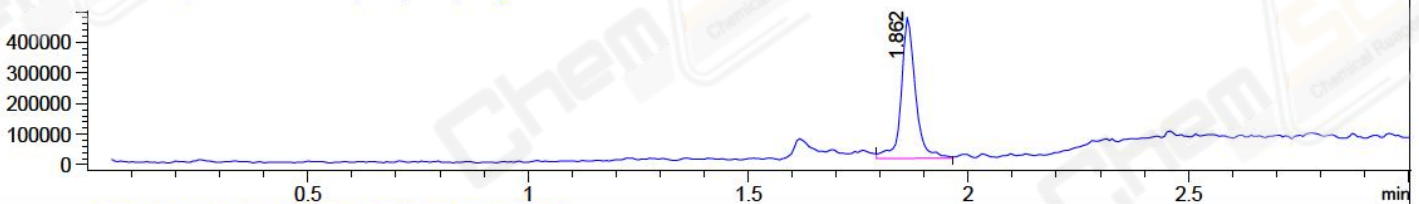
DAD1 B, Sig=214,4 Ref=off



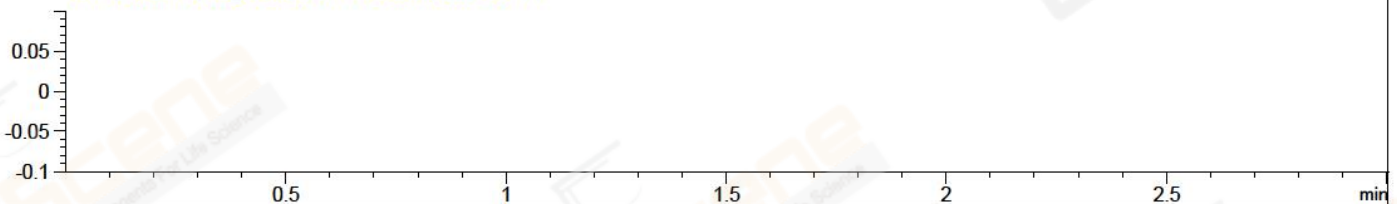
DAD1 C, Sig=254,4 Ref=off



MSD1 TIC, MS File ES-API, Pos, Scan, Frag: 70



Ion 1, MSD1 1, Target Mass 0 +H Positive, EIC=0.7:1.7



Integration Results for DAD1 B, Sig=214,4 Ref=off

RetTim	Width	Area	Height	Area%	MS (+)
1.20	0.01	4.76	5.93	0.30	ND
1.59	0.02	14.26	12.54	0.90	174
1.83	0.02	1561.61	1547.54	98.65	387
2.44	0.02	2.41	2.25	0.15	159

Integration Results for DAD1 C, Sig=254,4 Ref=off

RetTim	Width	Area	Height	Area%	MS (+)
1.19	0.01	0.54	0.67	0.19	ND
1.23	0.01	1.01	1.24	0.35	141
1.59	0.01	0.48	0.68	0.17	174
1.83	0.01	284.58	291.55	99.29	387

Integration Results for MSD1 TIC, MS File

RetTim	Width	Area	Height	Area%	MS (+)
1.86	0.03	1037252.88	463357.03	100.00	387

Ret. Time: 1.86

<<<< POSITIVE SPECTRA >>>>

