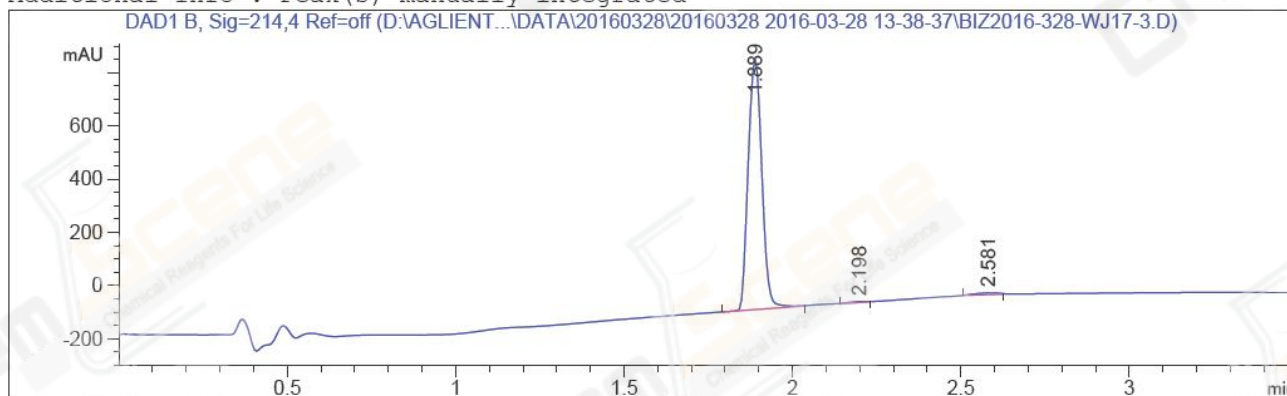


=====

Acq. Operator	: Su Xiao Ying(LCMS-02)	Seq. Line	: 47
Acq. Instrument	: HY-LCMS-02	Location	: P1-A-06
Injection Date	: 3/28/2016 5:22:19 PM	Inj	: 1
		Inj Volume	: 3.000 µl
Different Inj Volume from Sample Entry		Actual Inj Volume	: 15.000 µl
Acq. Method	: D:\AGLIENT 1260\DATA\20160328\20160328 2016-03-28 13-38-37\100-1000MS+3MIN-1.5_(0.02%FA).M		
Last changed	: 3/28/2016 1:38:37 PM by Su Xiao Ying(LCMS-02)		
Analysis Method	: D:\AGLIENT 1260\DATA\20160328\20160328 2016-03-28 13-38-37\100-1000MS+3MIN-1.5_(0.02%FA).M (Sequence Method)		
Last changed	: 3/31/2016 10:51:46 AM by Su Xiao Ying(LCMS-02) (modified after loading)		
Method Info	: HY-365_5H01RS,M,A-RP-108, 210nm,23min		
Catalog No	: CS-1496 Batch#19934 A-RP-134		

Additional Info : Peak(s) manually integrated



=====
Area Percent Report
=====

Sorted By : Signal
Multiplier : 1.0000
Dilution : 1.0000
Do not use Multiplier & Dilution Factor with ISTDs

Signal 1: DAD1 B, Sig=214,4 Ref=off

Peak #	RetTime [min]	Type	Width [min]	Area [mAU*s]	Height [mAU]	Area %
1	1.889	MM	0.0464	2641.83032	948.55029	98.2709
2	2.198	MM	0.0592	15.22074	4.28757	0.5662
3	2.581	MM	0.0766	31.26183	6.80279	1.1629

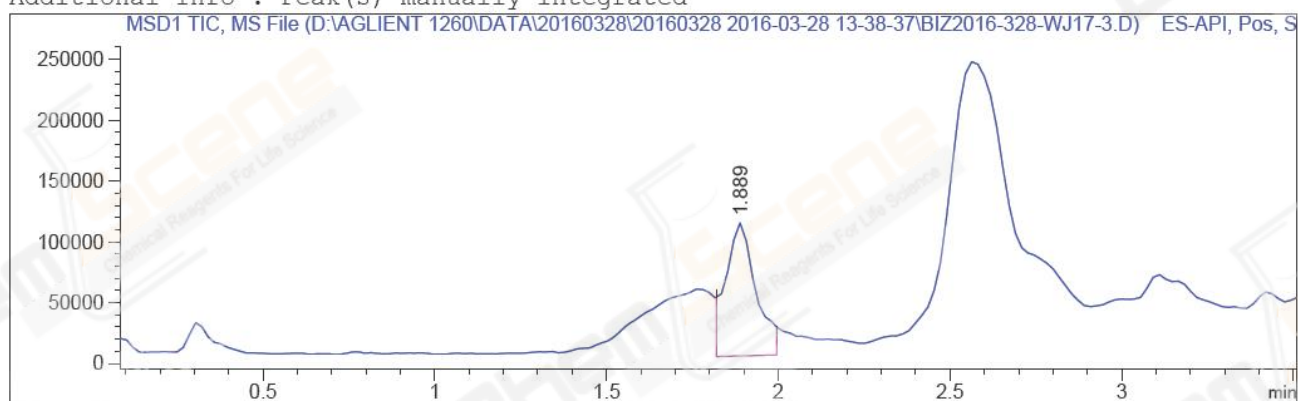
Totals : 2688.31290 959.64065

=====
*** End of Report ***

=====

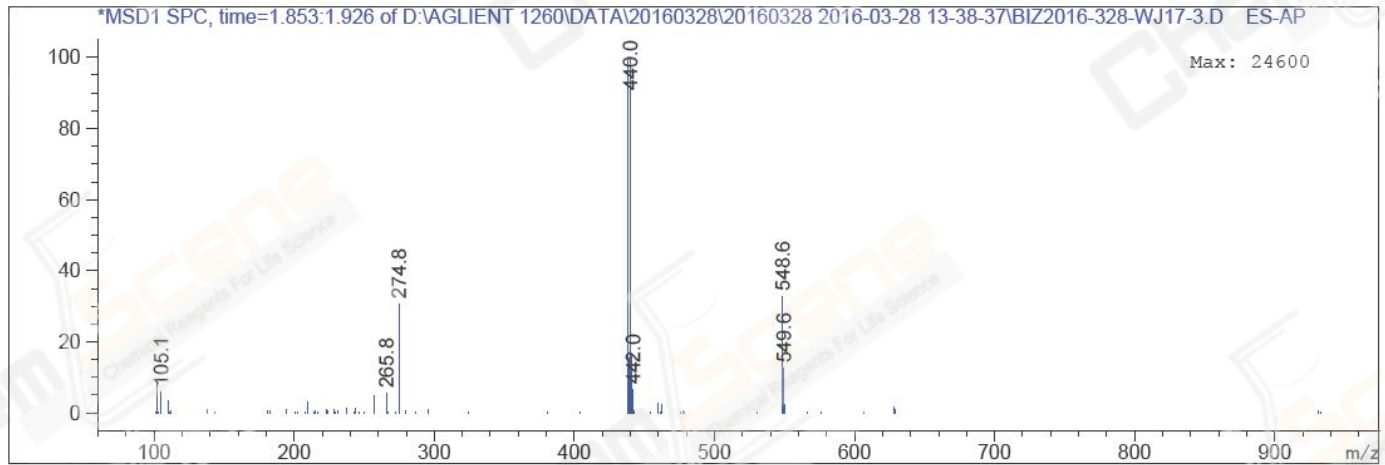
Acq. Operator	: Su Xiao Ying(LCMS-02)	Seq. Line	: 47
Acq. Instrument	: HY-LCMS-02	Location	: P1-A-06
Injection Date	: 3/28/2016 5:22:19 PM	Inj	: 1
		Inj Volume	: 3.000 µl
Different Inj Volume from Sample Entry		Actual Inj Volume	: 15.000 µl
Acq. Method	: D:\AGLIENT 1260\DATA\20160328\20160328 2016-03-28 13-38-37\100-1000MS+3MIN-1.5_(0.02%FA).M		
Last changed	: 3/28/2016 1:38:37 PM by Su Xiao Ying(LCMS-02)		
Analysis Method	: D:\AGLIENT 1260\DATA\20160328\20160328 2016-03-28 13-38-37\100-1000MS+3MIN-1.5_(0.02%FA).M (Sequence Method)		
Last changed	: 3/28/2016 5:27:02 PM by Su Xiao Ying(LCMS-02) (modified after loading)		
Method Info	: HY-365_5H01RS,M,A-RP-108, 210nm,23min		
Catalog No	: CS-1496 Batch#19934 A-RP-134		

Additional Info : Peak(s) manually integrated



MS Signal: MSD1 TIC, MS File, ES-API, Pos, Scan, Frag: 50
Spectra averaged over upper half of peaks.
Noise Cutoff: 1000 counts.
Reportable Ion Abundance: > 10%.

Retention Time (MS)	MS Area	Mol. Weight or Ion
1.889	645903	549.60 I
		548.60 I
		441.00 I
		440.05 I
		439.10 I
		438.10 I
		274.80 I



*** End of Report ***