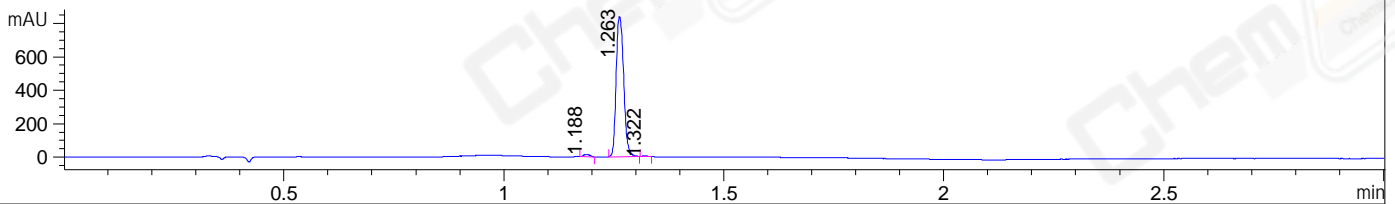


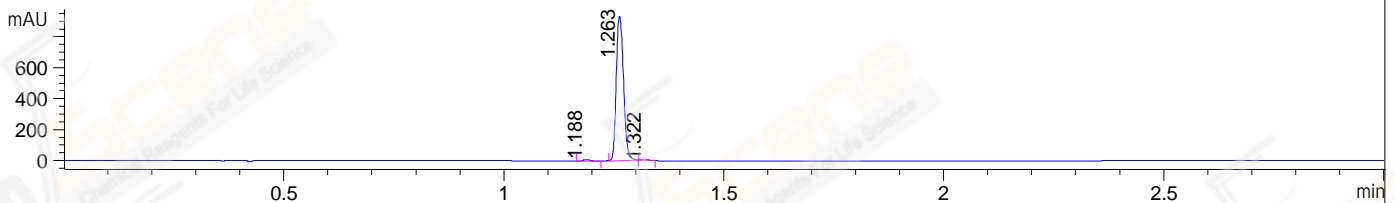
File ..ATA\2018\20190103\550\CPK2019-102-20079-1.D Tgt Mass (CHM):

Injection Date : 3 Jan 19 10:38 am +0800 Seq. Line : 17  
 Sample Name : CPK2019-102-20079 Location : P1-A-06  
 Acq. Operator : LQ\_1052 Inj : 1  
 Spec. Reported : MS Integration Inj Volume : 2 ul  
 Acq. Method : D:\Chem32\1\data\2018\20190103\550\1-POS-3MIN-1.M  
 Analysis Method : D:\CHEM32\1\DATA\2018\20190103\550\1-POS-3MIN-1.M  
 CAS NO. : 55837-20-2  
 Method Info : Mobile Phase: A: water(0.01%TFA) B:ACN(0.01%TFA)  
 Gradient: 5% to 95%B within 1.3 min  
 Flow Rate :1.8ml/min  
 Column :SunFire C18, 4.6\*50mm,3.5um A-RP-314  
 Oven Temperature : 45□

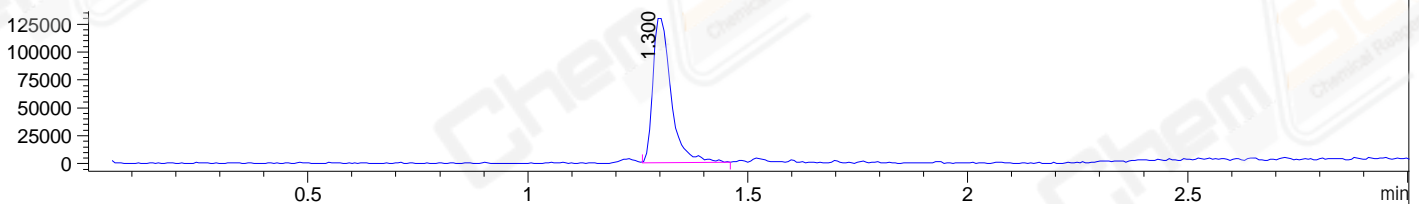
DAD1 B, Sig=214,4 Ref=off



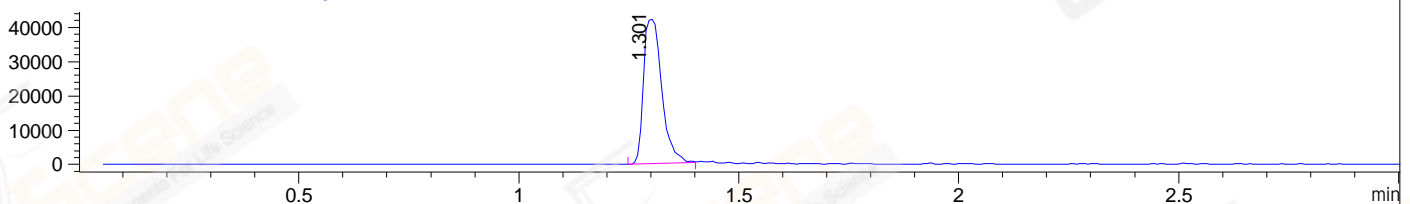
DAD1 C, Sig=254,4 Ref=off



MSD1 TIC, MS File ES-API, Pos, Scan, Frag: 70



Ion 415.7, MSD1 415.7, Target Mass 414.7 +H Positive, EIC=415.4:416.4



Integration Results for DAD1 B, Sig=214,4 Ref=off

RetTim	Width	Area	Height	Area%	MS (+)
1.19	0.02	14.94	14.46	1.47	ND
1.26	0.02	996.11	838.67	98.32	416
1.32	0.01	2.06	2.57	0.20	416

Integration Results for DAD1 C, Sig=254,4 Ref=off

RetTim	Width	Area	Height	Area%	MS (+)
1.19	0.02	8.61	7.89	0.80	ND
1.26	0.02	1067.91	932.13	98.95	416
1.32	0.02	2.74	2.33	0.25	416

Integration Results for MSD1 TIC, MS File

RetTim	Width	Area	Height	Area%	MS (+)
1.30	0.04	372101.72	130905.23	100.00	416

Ret. Time: 1.30

<<<< POSITIVE SPECTRA >>>>

ES-API Positive

