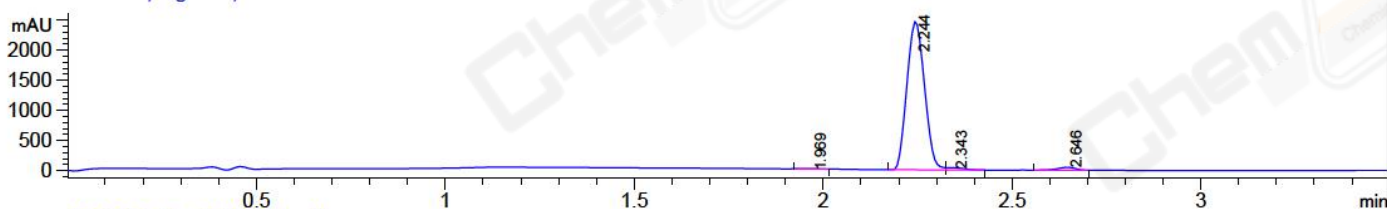


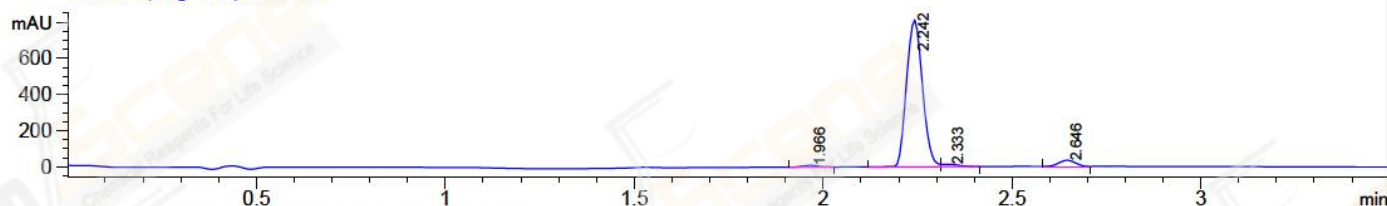
File ..0160405 2016-04-20 10-45-59\ZCL3335-022-1.D Tgt Mass (CHM):

Injection Date : 20 Apr 16 11:41 am +0800 Seq. Line : 14
 Sample Name : ZCL3335-022-1 Location : P1-B-03
 Acq. Operator : Su Xiao Ying(LCMS-02) Inj : 1
 Spec. Reported : MS Integration Inj Volume : 3 ul
 Acq. Method : D:\Aglient 1260\Data\20160420\20160405 2016-04-20 10-45-59\100-1000MS+3MIN-
 Analysis Method : D:\AGLIENT 1260\DATA\20160420\20160405 2016-04-20 10-45-59\100-1000MS+3MIN-
 Catalog No : CS-M3436 Batch#20146 A-RP-134
 Method Info : HY-365_5H01RS,M,A-RP-108, 210nm,23min

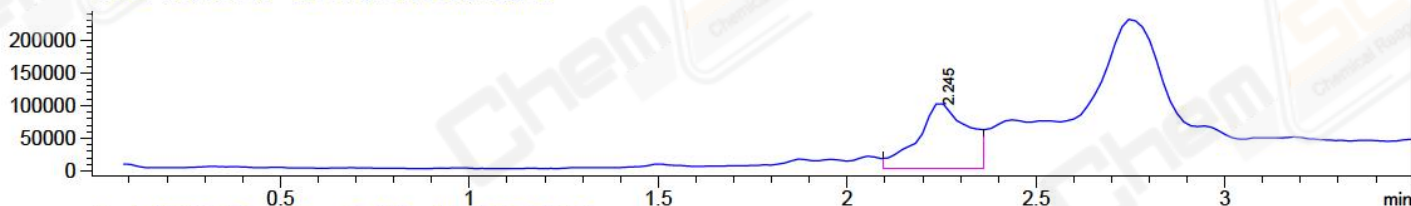
DAD1 B, Sig=214,4 Ref=off



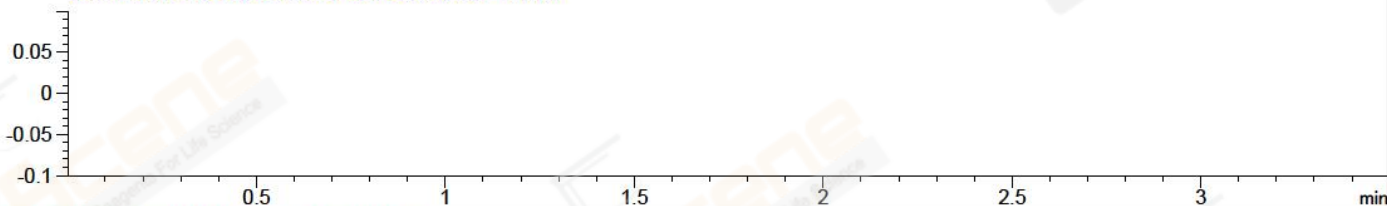
DAD1 C, Sig=254,4 Ref=off



MSD1 TIC, MS File ES-API, Pos, Scan, Frag: 50



Ion 1, MSD1 1, Target Mass 0 +H Positive, EIC=0.7:1.7



Integration Results for DAD1 B, Sig=214,4 Ref=off

RetTim	Width	Area	Height	Area%
1.97	0.05	22.82	7.90	0.28
2.24	0.05	7958.78	2476.61	96.26
2.34	0.05	116.61	38.03	1.41
2.65	0.06	169.46	48.94	2.05

Integration Results for DAD1 C, Sig=254,4 Ref=off

RetTim	Width	Area	Height	Area%
1.97	0.05	27.42	9.78	1.07
2.24	0.05	2388.49	818.35	93.34
2.33	0.05	40.23	13.43	1.57
2.65	0.05	102.90	33.96	4.02

Ret. Time: 2.25 <<<< POSITIVE SPECTRA >>>>

