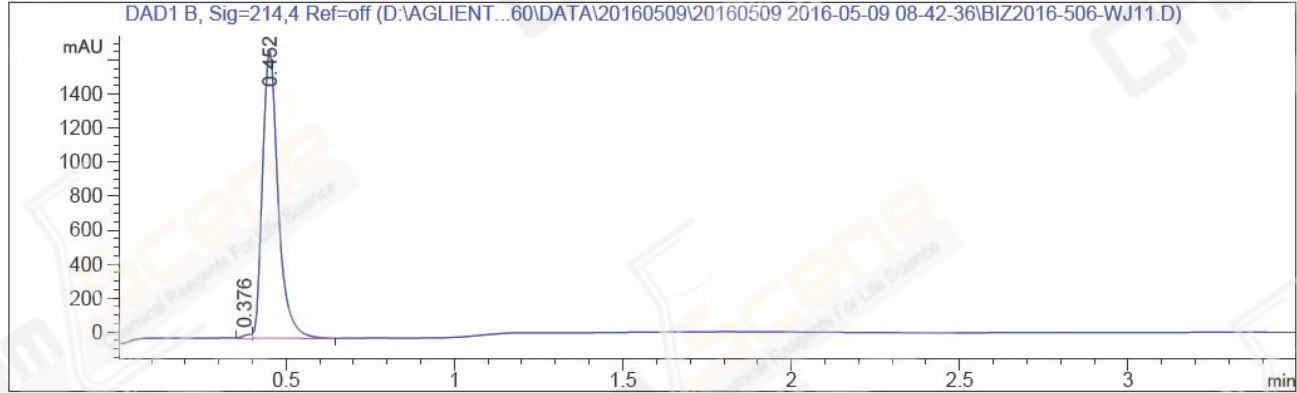


=====  
Acq. Operator : Su Xiao Ying(LCMS-02) Seq. Line : 22  
Acq. Instrument : HY-LCMS-02 Location : P1-F-03  
Injection Date : 5/9/2016 10:24:11 AM Inj : 1  
Inj Volume : 3.000 µl  
Acq. Method : D:\AGLIENT 1260\DATA\20160509\20160509 2016-05-09 08-42-36\100-1000MS+3MIN-  
1.5\_(0.02%FA).M  
Last changed : 5/9/2016 8:42:36 AM by Su Xiao Ying(LCMS-02)  
Analysis Method : D:\AGLIENT 1260\DATA\20160509\20160509 2016-05-09 08-42-36\100-1000MS+3MIN-  
1.5\_(0.02%FA).M (Sequence Method)  
Last changed : 5/9/2016 10:29:32 AM by Su Xiao Ying(LCMS-02)  
(modified after loading)  
Method Info : HY-365\_5H01RS,M,A-RP-108, 210nm,23min  
Catalog No : CS-0993 Batch#20283  
A-RP-134  
=====

Additional Info : Peak(s) manually integrated



=====  
Area Percent Report  
=====

Sorted By : Signal  
Multiplier : 1.0000  
Dilution : 1.0000  
Do not use Multiplier & Dilution Factor with ISTDs

Signal 1: DAD1 B, Sig=214,4 Ref=off

Peak #	RetTime [min]	Type	Width [min]	Area [mAU*s]	Height [mAU]	Area %
1	0.376	MF	0.0330	46.51389	23.46137	0.8451
2	0.452	FM	0.0535	5457.12012	1701.20947	99.1549

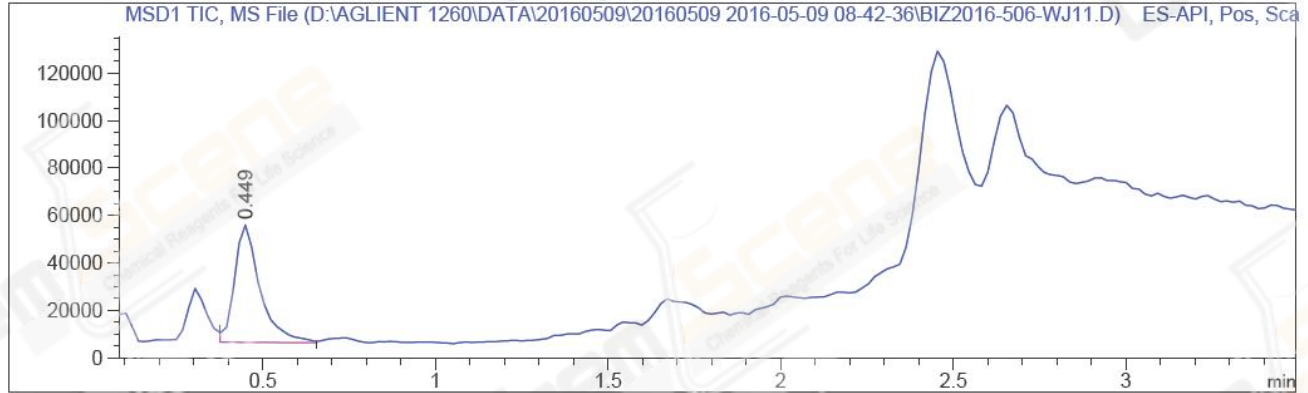
Totals : 5503.63400 1724.67085

=====  
\*\*\* End of Report \*\*\*  
=====

=====

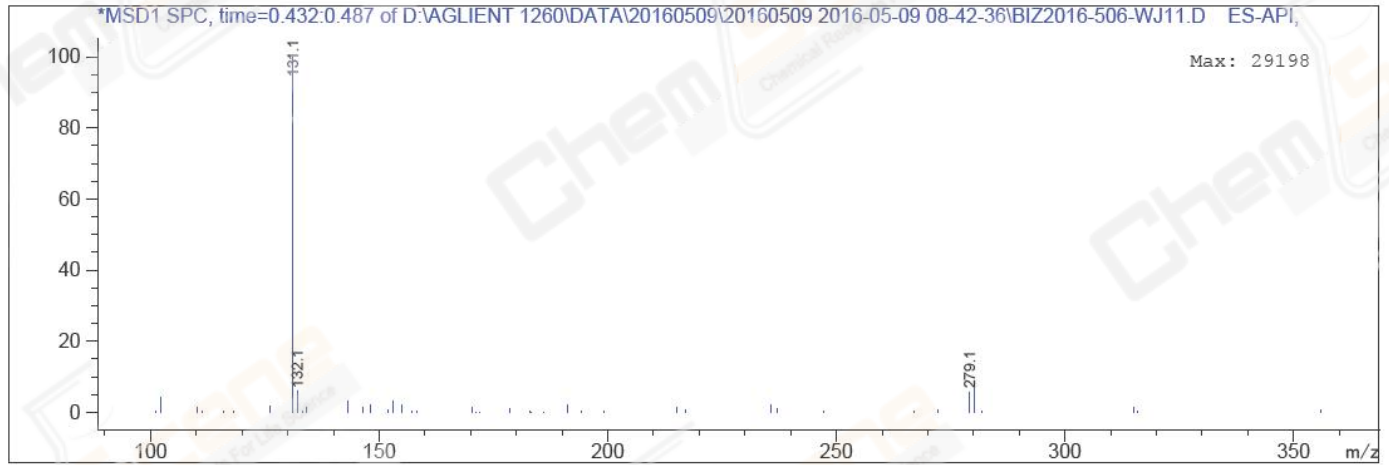
Acq. Operator	: Su Xiao Ying(LCMS-02)	Seq. Line	: 22
Acq. Instrument	: HY-LCMS-02	Location	: P1-F-03
Injection Date	: 5/9/2016 10:24:11 AM	Inj	: 1
		Inj Volume	: 3.000 µl
Acq. Method	: D:\AGLIENT 1260\DATA\20160509\20160509 2016-05-09 08-42-36\100-1000MS+3MIN-1.5_(0.02%FA).M		
Last changed	: 5/9/2016 8:42:36 AM by Su Xiao Ying(LCMS-02)		
Analysis Method	: D:\AGLIENT 1260\DATA\20160509\20160509 2016-05-09 08-42-36\100-1000MS+3MIN-1.5_(0.02%FA).M (Sequence Method)		
Last changed	: 5/9/2016 10:28:14 AM by Su Xiao Ying(LCMS-02) (modified after loading)		
Method Info	: HY-365_5H01RS,M,A-RP-108, 210nm,23min		
Catalog No	: CS-0993 Batch#20283 A-RP-134		

Additional Info : Peak(s) manually integrated



MS Signal: MSD1 TIC, MS File, ES-API, Pos, Scan, Frag: 50  
Spectra averaged over upper half of peaks.  
Noise Cutoff: 1000 counts.  
Reportable Ion Abundance: > 10%.

Retention Time (MS)	MS Area	Mol. Weight or Ion
0.449	254364	131.10 I



\*\*\* End of Report \*\*\*