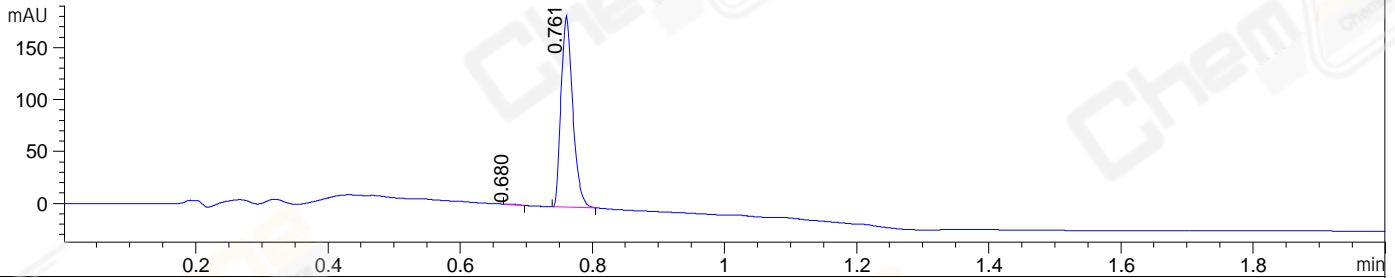
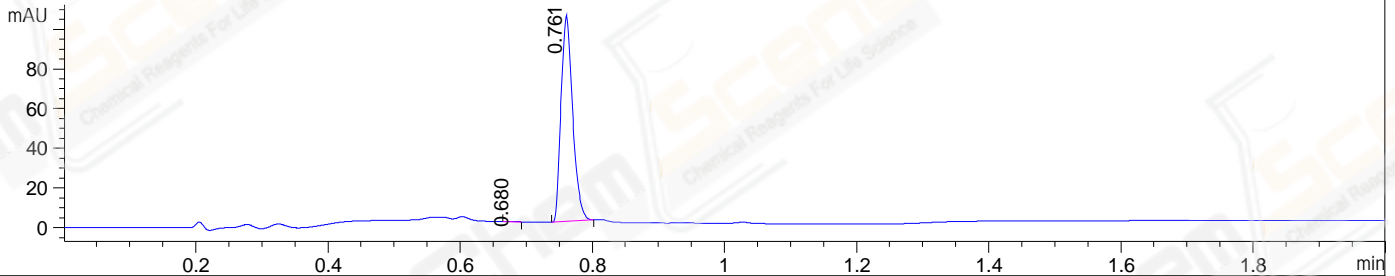


File ..22-08-15\ZSS14599-001-3-UPLC-MS-05-004571.D Tgt Mass (EZ):
 Injection Date : 15-Aug-22, 11:52:04 Seq. Line : 0
 Sample Name : ZSS14599-001-3 Location : P1-E-03
 Acq. Operator : LY_2287 Inj : 1
 Spec. Reported : MS Integration Inj Volume : 0.2 ul
 Acq. Method : D:\methods\1-POS-UPLC2.0MIN-(0.8)(150-1000).M
 Analysis Method : D:\METHODS\1-POS-UPLC2.0MIN-(0.8)(150-1000).M
 CAS NO. : 1998705-64-8 WalkUp method: '1-POS-2MIN' Project: LD1447
 Method Info : Mobile Phase: A: water(0.01%TFA) B:ACN(0.01%TFA)
 Gradient: 5% to 95%B within 1.3 min
 Flow Rate : 0.8ml/min
 Column :Poroshell 120 EC- C18, 2.1*50mm,1.9um A-RP-750
 Oven Temperature : 45C

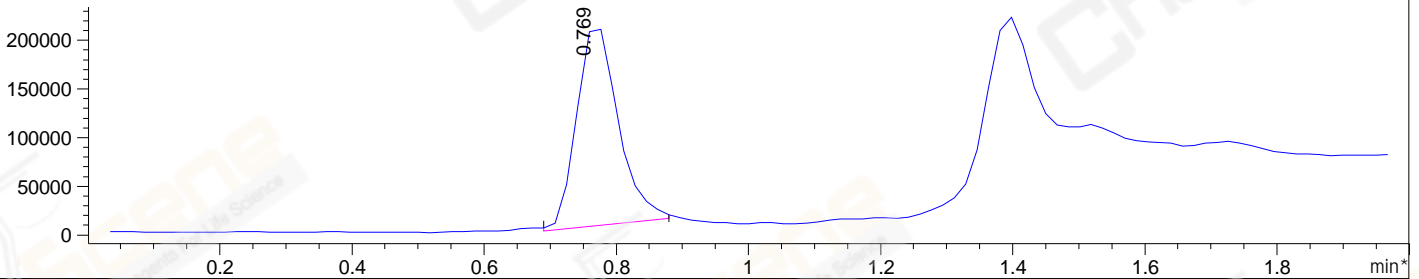
DAD1 A, Sig=214,4 Ref=off



DAD1 B, Sig=254,4 Ref=off



*MSD1 TIC, MS File ES-API, Pos, Scan, Frag: 70



Integration Results for DAD1 A, Sig=214,4 Ref=off

RetTim	Width	Area	Height	Area%	MS(+)
0.68	0.02	0.42	0.42	0.19	ND
0.76	0.02	226.67	184.49	99.81	582

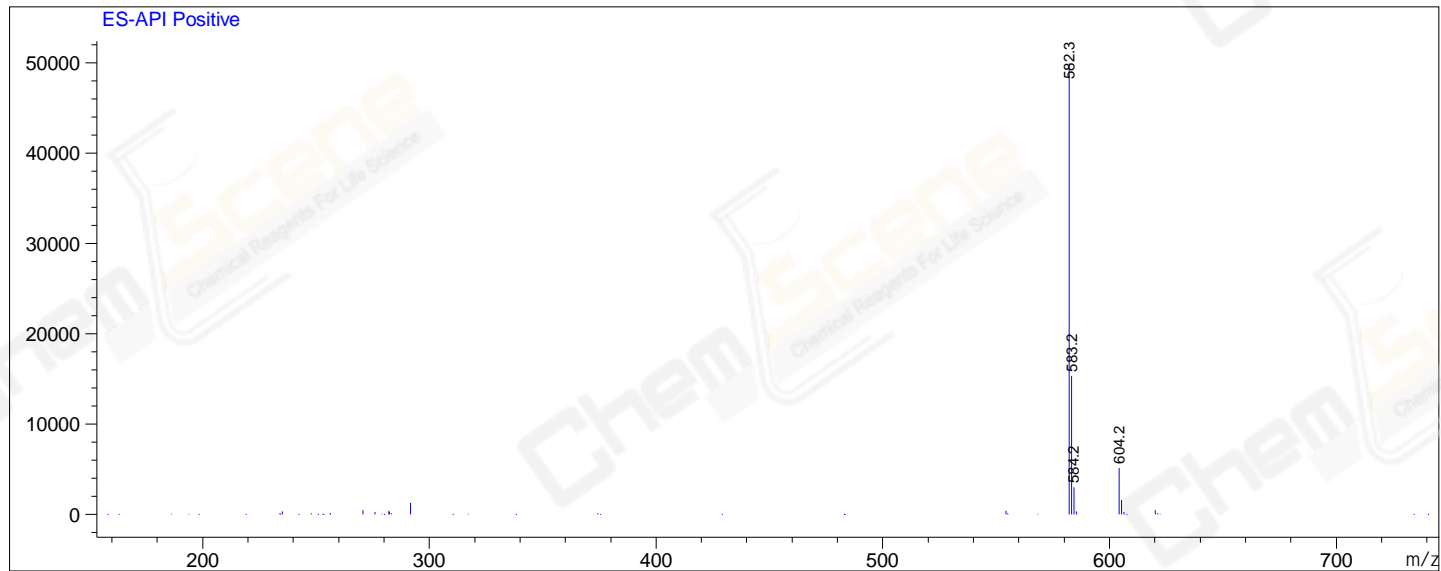
Integration Results for DAD1 B, Sig=254,4 Ref=off

RetTim	Width	Area	Height	Area%	MS(+)
0.68	0.02	0.37	0.31	0.29	ND
0.76	0.02	126.85	104.06	99.71	582

Integration Results for MSD1 TIC, MS File

RetTim	Width	Area	Height	Area%	MS(+)
0.77	0.07	893523.13	211665.70	100.00	582

Ret. Time: 0.77 <<<< POSITIVE SPECTRA >>>>



*** End of Report ***