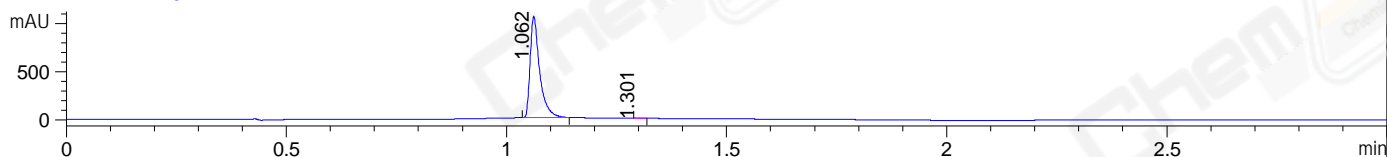
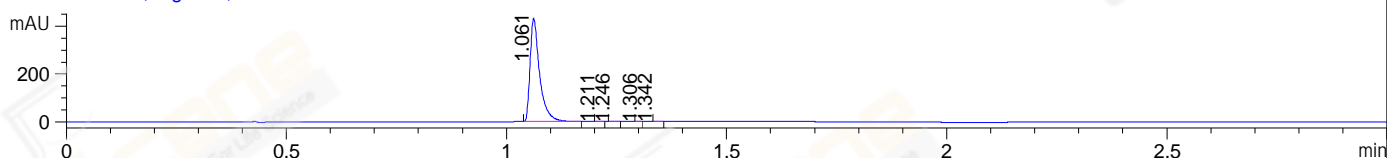


File ..ata\20171023\20171023 1\CPK2017-O20-20521.D Tgt Mass (CHM):
Injection Date : 23 Oct 17 2:09 pm +0800 Seq. Line : 56
Sample Name : CPK2017-O20-20521 Location : P1-E-07
Acq. Operator : SYSTEM Inj : 1
Spec. Reported : MS Integration Inj Volume : 1 ul
Acq. Method : D:\LCMS03\Data\20171023\20171023 1\1-POS-3MIN.M
Analysis Method : D:\LCMS03\Data\20171023\20171023 1\1-POS-3MIN.M
Catalog No : CS-2103 Batch#20521
Method Info : Mobile Phase: A: water(0.01%TFA) B:ACN(0.01%TFA)
Gradient: 5% to 95%B within 1.3 min
Flow Rate :1.8ml/min
Column :SunFire C18, 4.6*50mm,3.5um A-RP-186
Oven Temperature : 45C

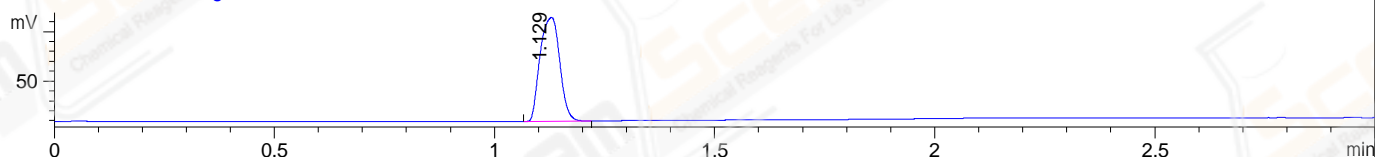
DAD1 A, Sig=214,4 Ref=off



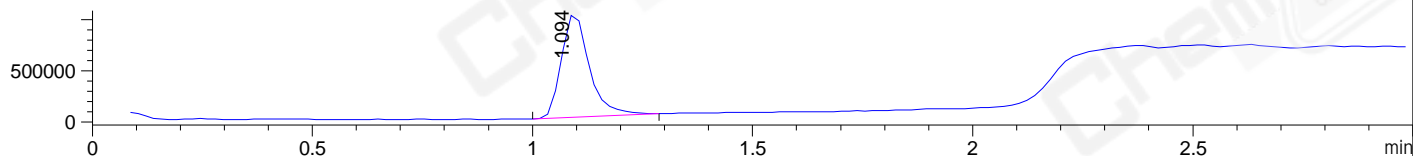
DAD1 B, Sig=254,4 Ref=off



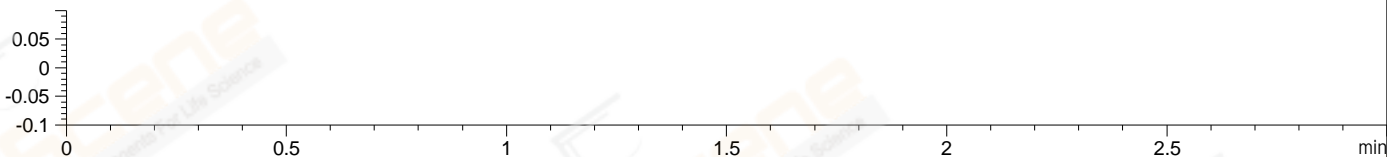
ELS1 A, ELSD Signal



MSD1 TIC, MS File ES-API, Pos, Scan, Frag: 70



Ion 0, MSD1 0, Target Mass 0 Positive, EIC=-0.30:0.70



Integration Results for DAD1 A, Sig=214,4 Ref=off

RetTim	Width	Area	Height	Area%	MS (+)
1.06	0.02	1572.85	1056.25	99.85	402
1.30	0.02	2.32	2.37	0.15	402

Integration Results for DAD1 B, Sig=254,4 Ref=off

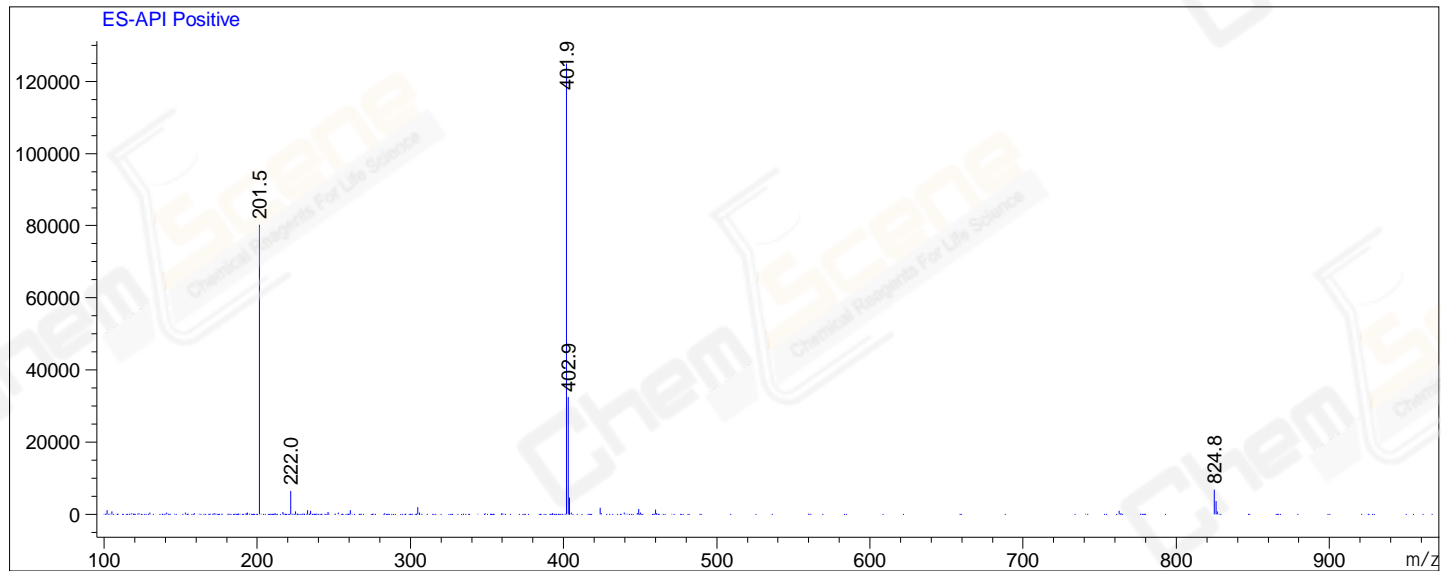
RetTim	Width	Area	Height	Area%	MS (+)
1.06	0.03	644.44	429.61	99.89	402
1.21	0.01	0.06	0.08	0.01	402
1.25	0.02	0.12	0.11	0.02	402
1.31	0.02	0.25	0.27	0.04	402
1.34	0.01	0.29	0.40	0.04	402

Integration Results for MSD1 TIC, MS File

RetTim	Width	Area	Height	Area%	MS (+)
1.09	0.07	4462536.00	1017710.31	100.00	402

Ret. Time: 1.09

<<<< POSITIVE SPECTRA >>>>



*** End of Report ***