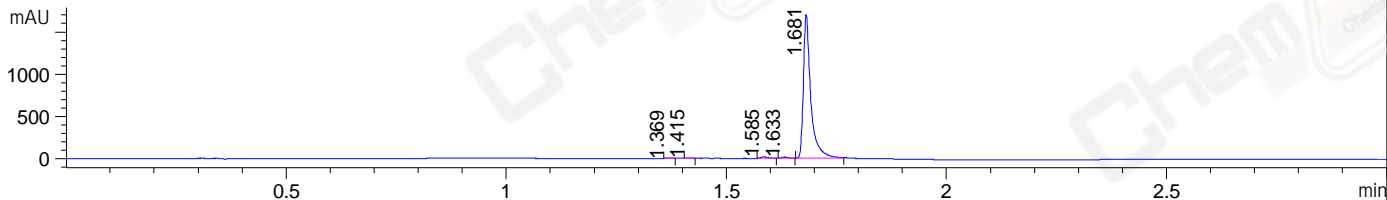
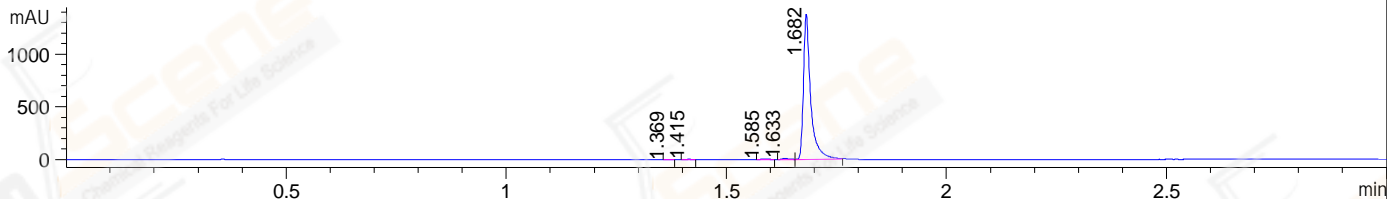


File ..\DATA\2019\20190423\566\CPK2019-423-20593.D Tgt Mass (CHM):
Injection Date : 23 Apr 19 1:07 pm +0800 Seq. Line : 51
Sample Name : CPK2019-423-20593 Location : P1-B-07
Acq. Operator : LQ_1052 Inj : 1
Spec. Reported : MS Integration Inj Volume : 1 ul
Acq. Method : D:\Chem32\1\data\2019\20190423\566\1-POS-3MIN-1.M
Analysis Method : D:\CHEM32\1\DATA\2019\20190423\566\1-POS-3MIN-1.M
Catalog No : CS-5597 Batch#20593
Method Info : Mobile Phase: A: water(0.01%TFA) B:ACN(0.01%TFA)
Gradient: 5% to 95%B within 1.3 min
Flow Rate :1.8ml/min
Column :SunFire C18, 4.6*50mm,3.5um A-RP-322
Oven Temperature : 45□

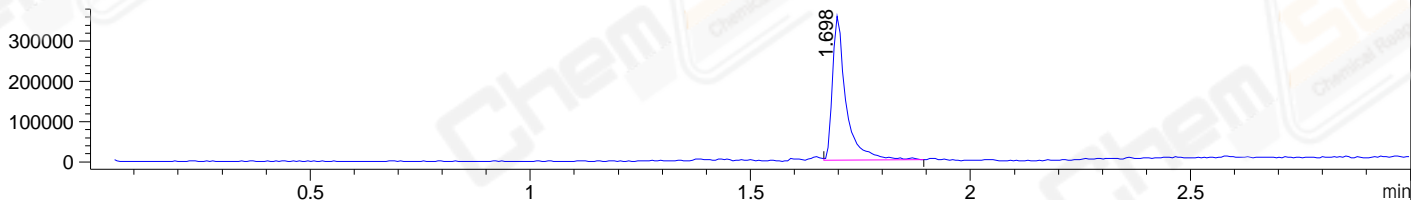
DAD1 B, Sig=214,4 Ref=off



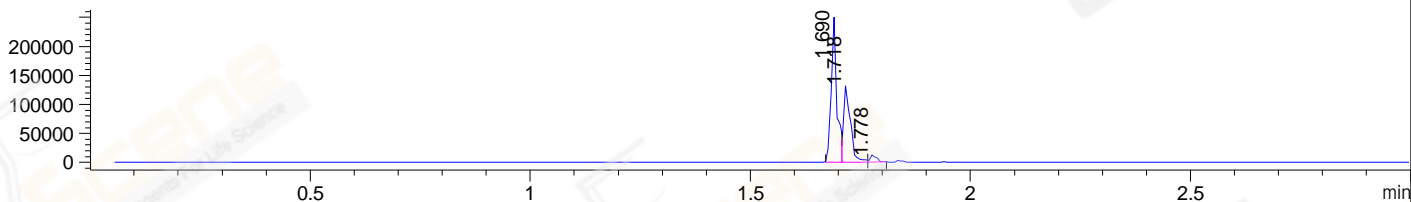
DAD1 C, Sig=254,4 Ref=off



MSD1 TIC, MS File ES-API, Pos, Scan, Frag: 70



Ion 551.5, MSD1 551.5, Target Mass 550.5 +H Positive, EIC=551.2:552.2



Integration Results for DAD1 B, Sig=214,4 Ref=off

RetTim	Width	Area	Height	Area%	MS (+)
1.37	0.01	2.02	2.75	0.10	ND
1.41	0.01	2.55	3.38	0.13	ND
1.59	0.02	16.53	17.08	0.82	ND
1.63	0.02	13.10	13.55	0.65	567
1.68	0.02	1993.14	1703.59	98.31	551

Integration Results for DAD1 C, Sig=254,4 Ref=off

RetTim	Width	Area	Height	Area%	MS (+)
1.37	0.01	0.89	1.15	0.06	ND
1.42	0.01	1.49	1.97	0.09	ND
1.59	0.02	6.37	6.22	0.40	ND
1.63	0.01	9.48	9.85	0.60	567
1.68	0.02	1574.79	1377.59	98.86	551

Integration Results for MSD1 TIC, MS File

RetTim	Width	Area	Height	Area%	MS (+)
--------	-------	------	--------	-------	--------

-----|-----|-----|-----|-----|-----|
1.70 0.03 777221.38 360164.66 100.00 551

Ret. Time: 1.70

<<<< POSITIVE SPECTRA >>>>

ES-API Positive

