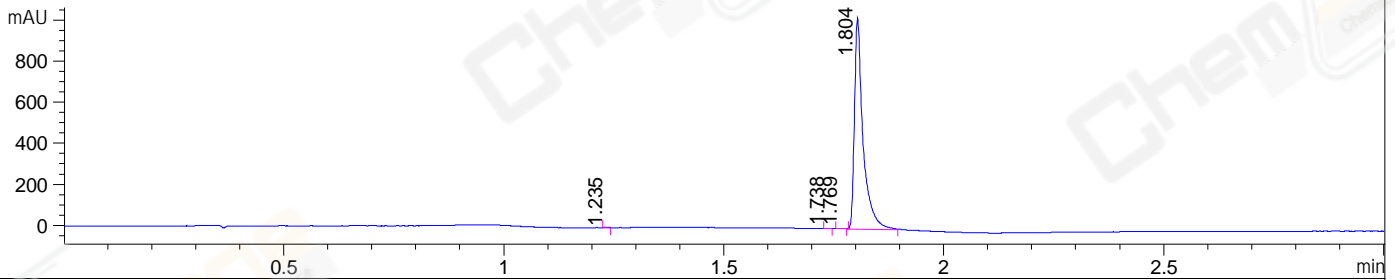
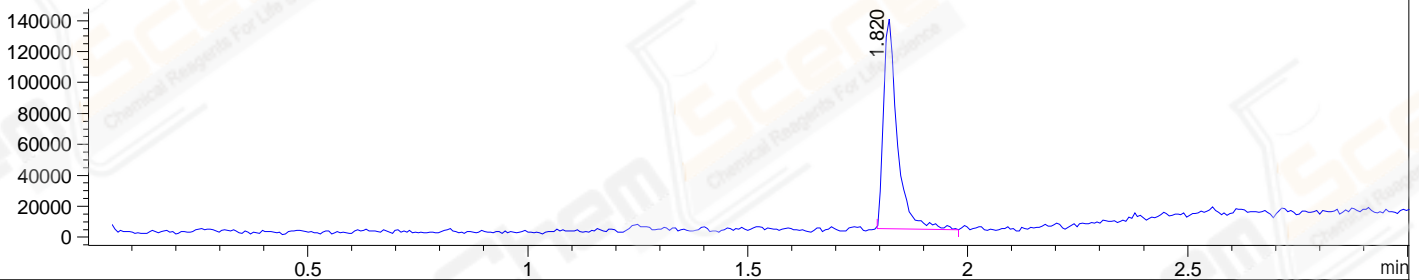


File ..\DATA\2019\20190305\548\CPK2019-304-21034.D Tgt Mass (CHM):
Injection Date : 5 Mar 19 3:08 pm +0800 Seq. Line : 61
Sample Name : CPK2019-304-21034 Location : P2-A-03
Acq. Operator : LQ_1052 Inj : 1
Spec. Reported : MS Integration Inj Volume : 1 ul
Acq. Method : D:\Chem32\1\data\2019\20190305\548\1-POS-3MIN-1.M
Analysis Method : D:\CHEM32\1\DATA\2019\20190305\548\1-POS-3MIN-1.M
CAS NO. : 362-07-2
Method Info : Mobile Phase: A: water(0.01%TFA) B:ACN(0.01%TFA)
Gradient: 5% to 95%B within 1.3 min
Flow Rate :1.8ml/min
Column :SunFire C18, 4.6*50mm,3.5um A-RP-314
Oven Temperature : 45□

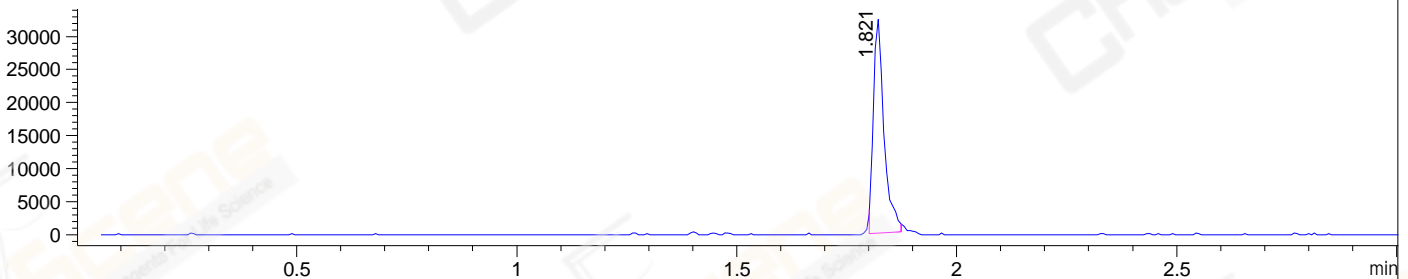
DAD1 B, Sig=214,4 Ref=off



MSD1 TIC, MS File ES-API, Pos, Scan, Frag: 70



Ion 303.4, MSD1 303.4, Target Mass 302.4 +H Positive, EIC=303.1:304.1



Integration Results for DAD1 B, Sig=214,4 Ref=off

RetTim	Width	Area	Height	Area%	MS (+)
1.23	0.01	0.58	0.75	0.04	316
1.74	0.01	0.71	1.06	0.05	ND
1.77	0.01	1.22	1.49	0.09	ND
1.80	0.02	1400.50	1027.66	99.82	285

Integration Results for MSD1 TIC, MS File

RetTim	Width	Area	Height	Area%	MS (+)
1.82	0.03	294212.63	136048.09	100.00	285

Ret. Time: 1.82

<<<< POSITIVE SPECTRA >>>>

ES-API Positive

