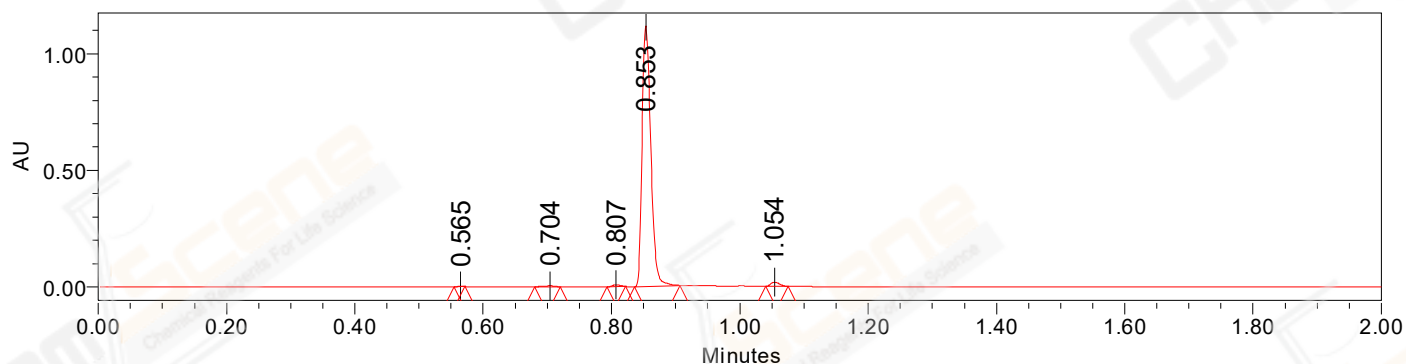


SAMPLE INFORMATION

CAS NO.: 537034-15-4
Sample information:
Vial: 1:C,5
Injection #: 1
Injection Volume: 0.50 ul
Run Time: 2.8 Minutes
Sample Set Name: 20220307

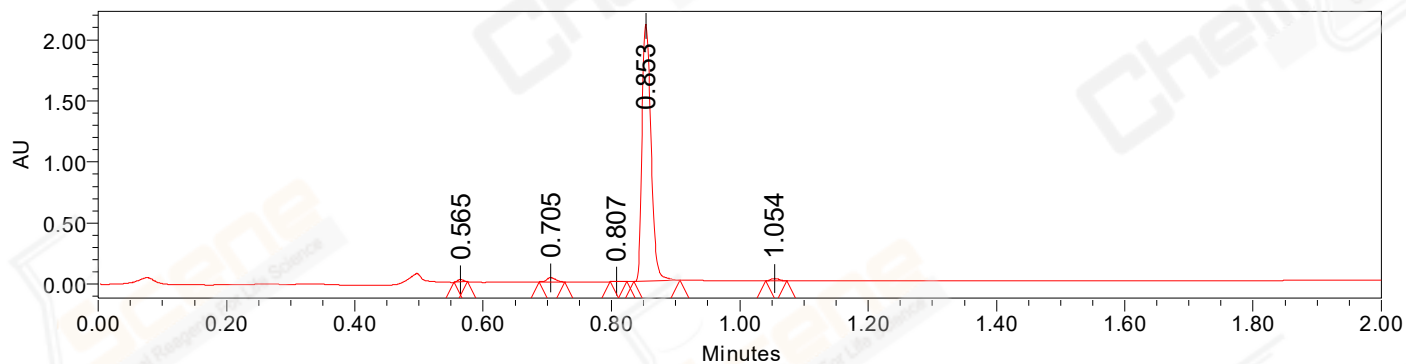
Acquired By: LY
Date Acquired: 3/7/2022 12:07:54 PM CST
Acq. Method Set: 1_POS_2MIN
Date Processed: 3/7/2022 1:00:30 PM CST,
Processing Method: PDA_01, MS_scan
Channel Name: PDA Ch1 214nm@4.8nm, MS TIC,
Column Name:

Auto-Scaled Chromatogram



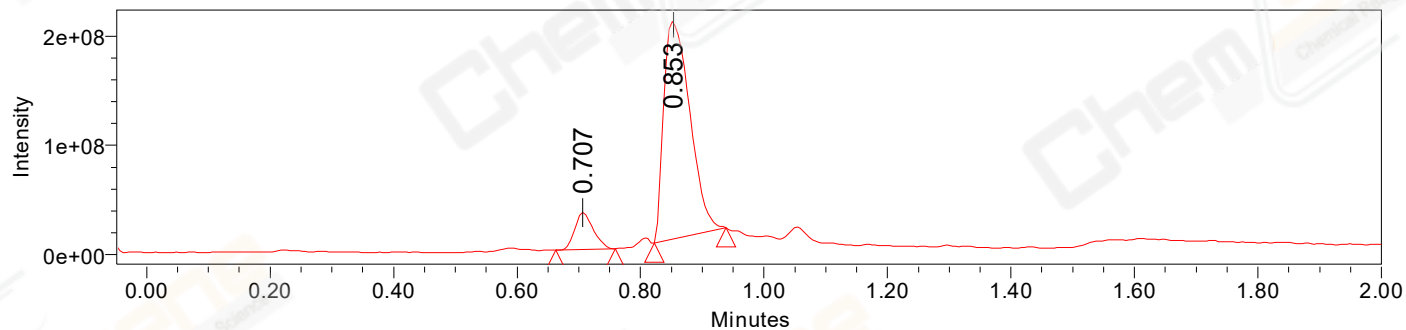
Processed Channel Descr. PDA Ch2 254nm@4.8nm

Auto-Scaled Chromatogram



Processed Channel Descr. PDA Ch1 214nm@4.8nm

Auto-Scaled Chromatogram



Processed Channel Descr. ACQ-SQD2 1: MS Scan MS TIC, Smoothed by 9 point Savitzky-Golay Filter., Time offset by -0.053 mins. (1: 150.00-1000.00 ES+, Centroid, CV=30)

Peak Results
Channel Name: PDA Ch2 254nm@4.8nm

	RT	Width (sec)	Area	Height	% Area	Base Peak (Combined) (m/z)	Channel Name
1	0.565	1.050	1090	1996	0.10	159.86	PDA Ch2 254nm@4.8nm
2	0.704	2.400	4973	4113	0.46	251.01	PDA Ch2 254nm@4.8nm
3	0.807	1.700	6383	7809	0.59	151.09	PDA Ch2 254nm@4.8nm
4	0.853	4.250	1051256	1117193	97.27	236.10	PDA Ch2 254nm@4.8nm
5	1.054	2.150	17027	17970	1.58	218.03	PDA Ch2 254nm@4.8nm

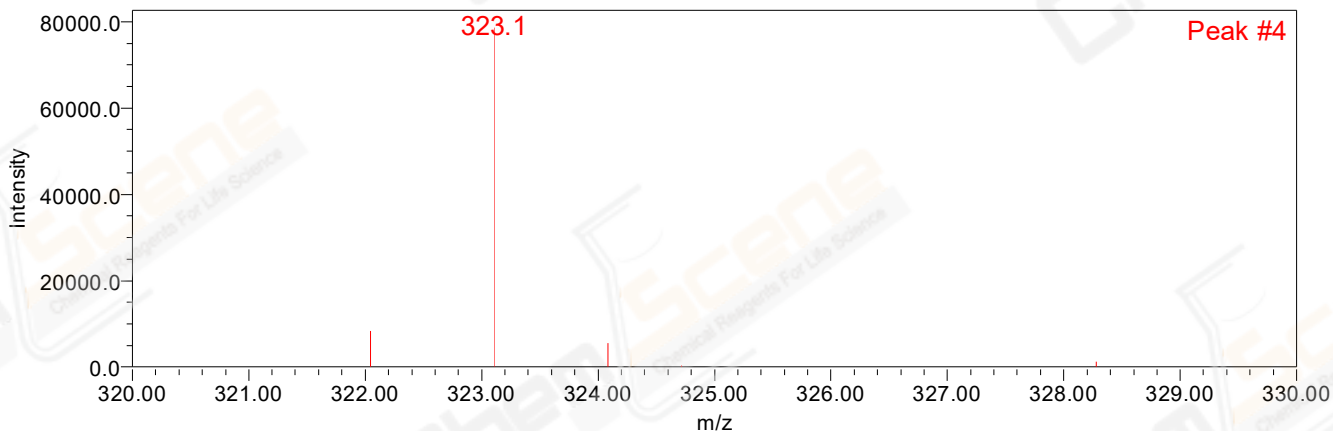
Peak Results
Channel Name: PDA Ch1 214nm@4.8nm

	RT	Width (sec)	Area	Height	% Area	Base Peak (Combined) (m/z)	Channel Name
1	0.565	1.250	12910	20448	0.61	233.03	PDA Ch1 214nm@4.8nm
2	0.705	2.350	30668	33790	1.45	251.10	PDA Ch1 214nm@4.8nm
3	0.807	1.550	2768	3473	0.13	151.12	PDA Ch1 214nm@4.8nm
4	0.853	4.300	2055296	2104678	96.92	236.10	PDA Ch1 214nm@4.8nm
5	1.054	1.950	18933	20401	0.89	218.03	PDA Ch1 214nm@4.8nm

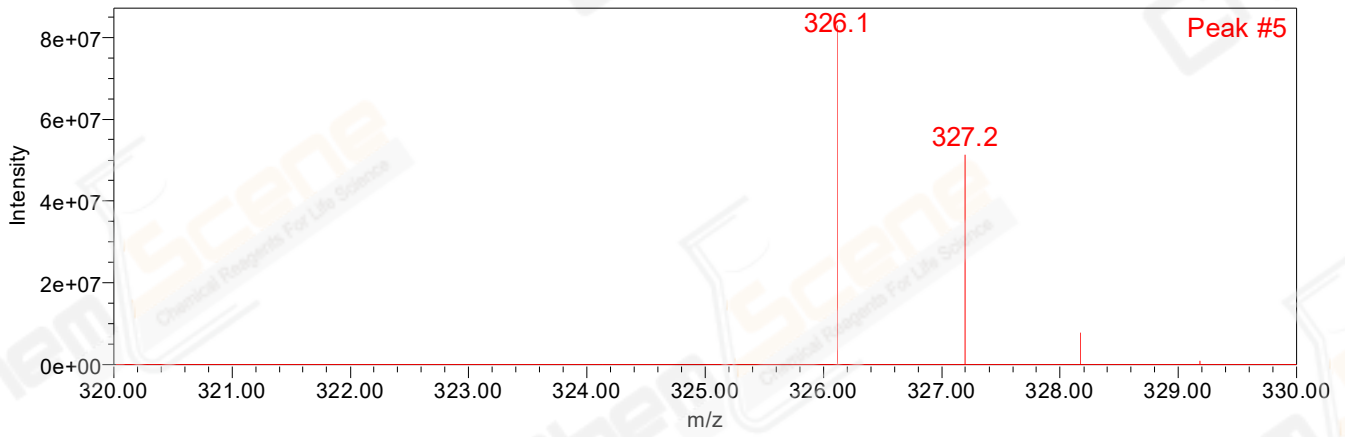
Peak Results
Channel Name: MS TIC

	RT	Width (sec)	Area	Height	% Area	Base Peak (Combined) (m/z)	Channel Name
1	0.707	5.803	70149877	33746440	10.64	171.09	MS TIC
2	0.853	6.963	589385566	200153525	89.36	326.12	MS TIC

Match Plot



Match Plot



Retention Time 0.853 Channel Name MS TIC