

Sample Name: DK3582-008-1

```

=====
Acq. Operator   : KFF (LCMS-02)
Sample Operator : KFF (LCMS-02)
Acq. Instrument : HY-LCMS-02
Injection Date  : 7/27/2016 12:39:37
Location       : P1-C-04
Inj            : 1
Inj Volume     : 1.000 µl

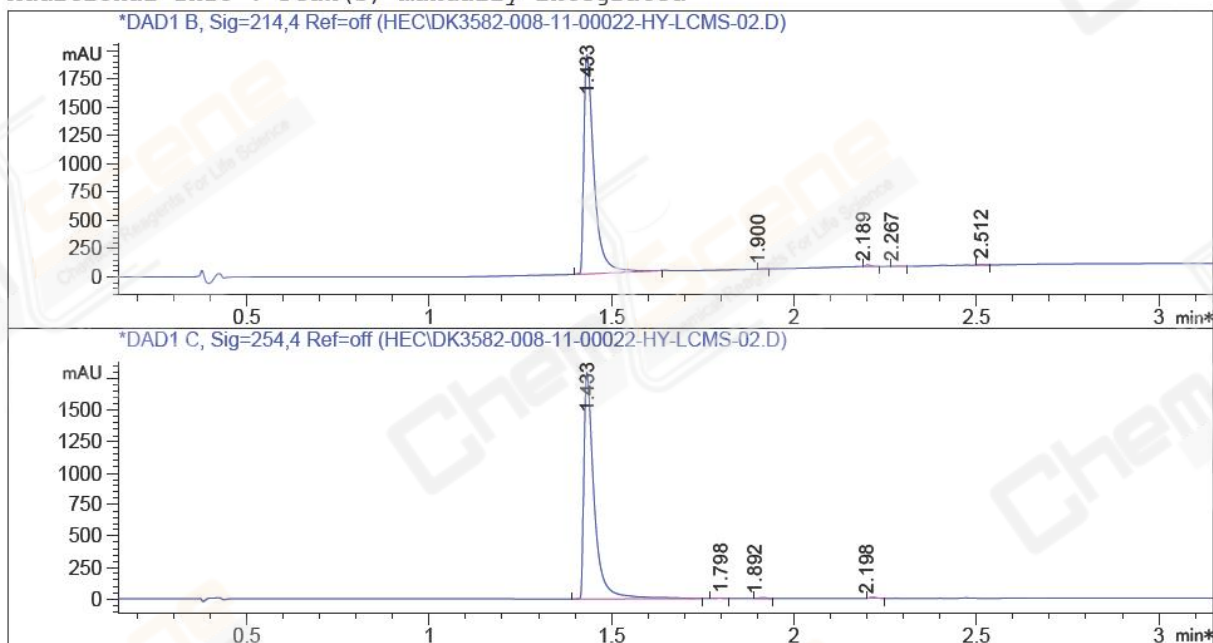
Acq. Method    : D:\CHEM32\1\METHODS\1-POS-3MIN.M
Last changed   : 7/27/2016 12:39:06 by KFF (LCMS-02)
                (modified after loading)

Analysis Method : F:\KFF\METHOD\BL30-90A,220 (RP-HPLC) .M-1.M
Last changed   : 7/27/2016 15:37:40 by KFF (LCMS-02)
                (modified after loading)

Method Info    : 30-90A,220NM

Catalog No     : CS-1305 Batch#21174
                Easy-Access Method: '1-POS-3MIN'
    
```

Additional Info : Peak(s) manually integrated



Area Percent Report

```

Sorted By      : Signal
Multiplier    : 1.0000
Dilution      : 1.0000
Do not use Multiplier & Dilution Factor with ISTDs
    
```

Signal 1: DAD1 B, Sig=214,4 Ref=off
 Signal has been modified after loading from rawdata file!

Peak #	RetTime [min]	Type	Width [min]	Area [mAU*s]	Height [mAU]	Area %
1	1.433	MM R	0.0323	3764.84204	1945.27869	99.1215
2	1.900	MM R	0.0187	3.46445	1.72369	0.0912
3	2.189	MM R	0.0187	20.19864	1.12533	0.5318
4	2.267	MM R	0.0292	6.74021	8.26777e-1	0.1775
5	2.512	MM R	0.0136	2.96266	3.62685	0.0780

Sample Name: DK3582-008-1

Peak #	RetTime [min]	Type	Width [min]	Area [mAU*s]	Height [mAU]	Area %
Totals :				3798.20799	1952.58132	

Signal 2: DAD1 C, Sig=254,4 Ref=off

Signal has been modified after loading from rawdata file!

Peak #	RetTime [min]	Type	Width [min]	Area [mAU*s]	Height [mAU]	Area %
1	1.433	MM R	0.0327	3536.60767	1804.56079	99.3274
2	1.798	MM R	0.0219	2.25028	1.70937	0.0632
3	1.892	MM R	0.0268	10.64721	1.21746e-1	0.2990
4	2.198	MM R	0.0204	11.05116	6.25109e-1	0.3104
Totals :				3560.55632	1807.01702	

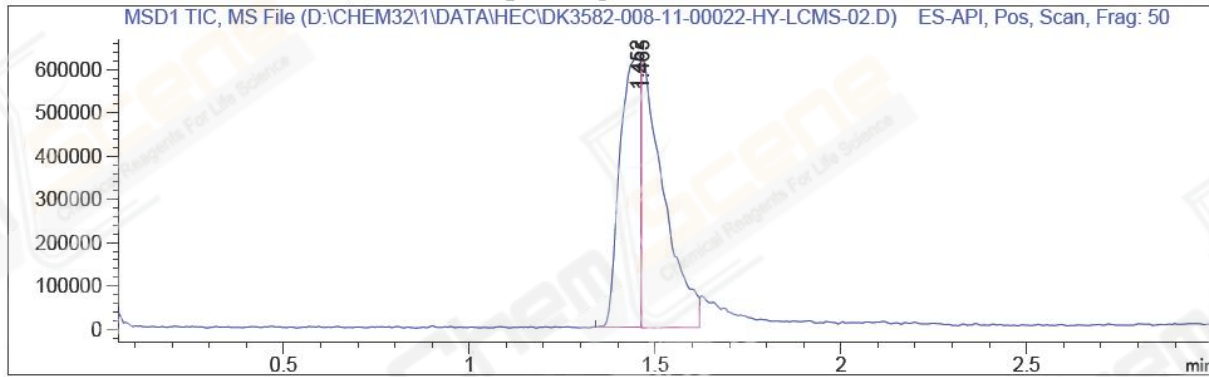
=====
*** End of Report ***

```
=====
Acq. Operator   : KFF (LCMS-02)
Sample Operator : KFF (LCMS-02)
Acq. Instrument : HY-LCMS-02                Location : P1-C-04
Injection Date  : 7/27/2016 12:39:37        Inj       : 1
                                                Inj Volume: 1.000 µl

Acq. Method     : D:\CHEM32\1\METHODS\1-POS-3MIN.M
Last changed    : 7/27/2016 12:39:06 by KFF (LCMS-02)
                  (modified after loading)
Analysis Method : F:\KFF\METHOD\BL30-90A,220 (RP-HPLC) .M-1.M
Last changed    : 7/27/2016 15:35:00 by KFF (LCMS-02)
                  (modified after loading)
Method Info     : 30-90A,220NM

Catalog No     : CS-1305 Batch#21174
                  Easy-Access Method: '1-POS-3MIN'
```

Additional Info : Peak(s) manually integrated



Sample Name: DK3582-008-1

MS Signal: MSD1 TIC, MS File, ES-API, Pos, Scan, Frag: 50
Spectra averaged over upper half of peaks.
Noise Cutoff: 1000 counts.
Reportable Ion Abundance: > 10%.

Retention Time (MS)	MS Area	Mol. Weight or Ion
1.452	2363484	425.25 I 213.20 I 142.60 I
1.465	2580273	425.25 I 213.20 I 142.60 I

