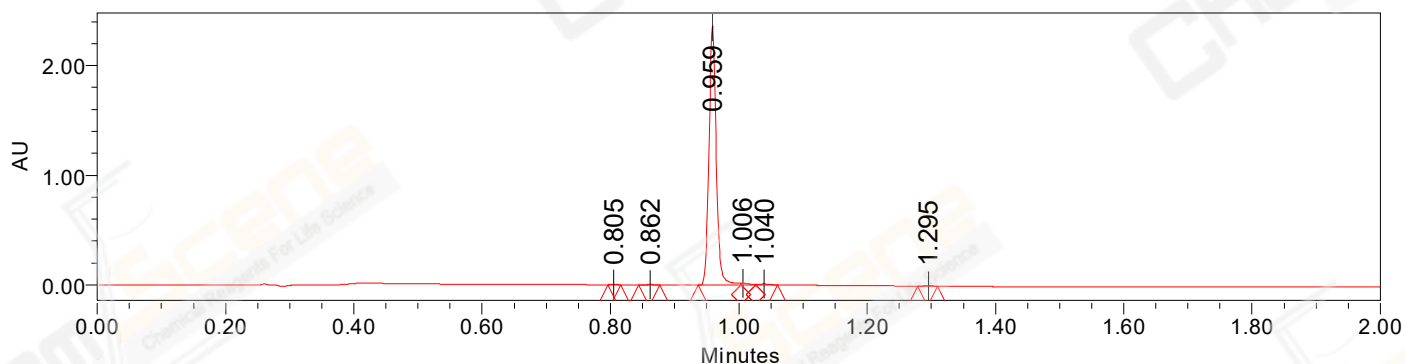


SAMPLE INFORMATION

CAS NO.: 871038-72-1
Sample information:
Vial: 2:B,5
Injection #: 1
Injection Volume: 0.30 ul
Run Time: 2.8 Minutes
Sample Set Name: 20220831

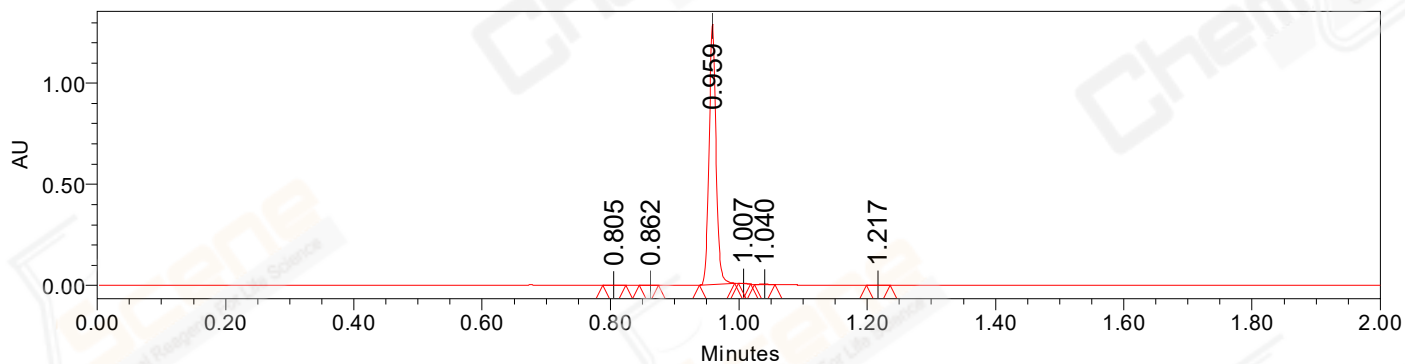
Acquired By: LY
Date Acquired: 8/31/2022 5:58:45 PM CST
Acq. Method Set: 1_POS_2MIN
Date Processed: 9/1/2022 10:42:30 AM CST,
Processing Method: PDA_01, MS_scan
Channel Name: PDA Ch1 214nm@4.8nm, MS TIC,
Column Name: A-RP-985

Auto-Scaled Chromatogram



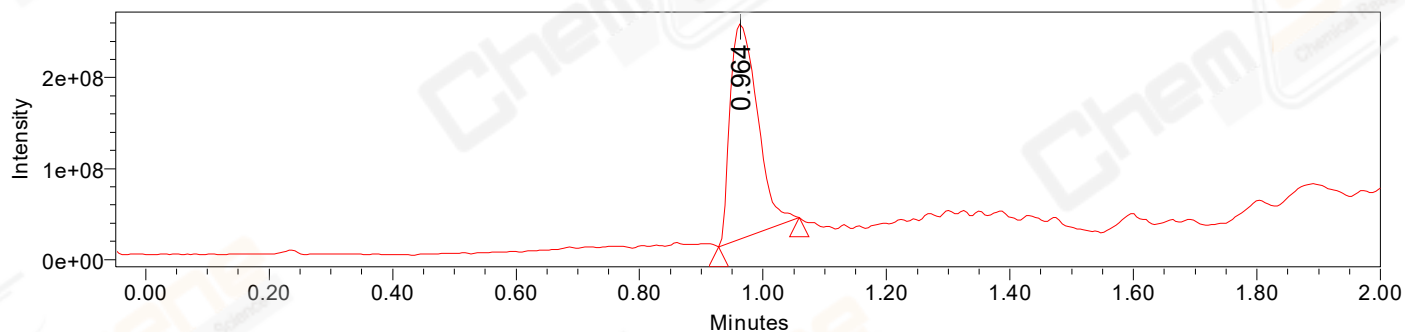
Processed Channel Descr. PDA Ch1 214nm@4.8nm

Auto-Scaled Chromatogram



Processed Channel Descr. PDA Ch2 254nm@4.8nm

Auto-Scaled Chromatogram



Processed Channel Descr. ACQ-SQD2 1: MS Scan MS TIC, Smoothed by 9 point Savitzky-Golay Filter., Time offset by -0.053 mins. (1: 150.00-1000.00 ES+, Centroid, CV=30)

Peak Results
Channel Name: PDA Ch2 254nm@4.8nm

	RT	Width (sec)	Area	Height	% Area	Base Peak (Combined) (m/z)	Channel Name
1	0.805	2.150	952	1248	0.10	152.93	PDA Ch2 254nm@4.8nm
2	0.862	1.800	1119	1631	0.11	407.17	PDA Ch2 254nm@4.8nm
3	0.959	3.300	974716	1287522	99.25	151.99	PDA Ch2 254nm@4.8nm
4	1.007	1.150	1829	3123	0.19	445.21	PDA Ch2 254nm@4.8nm
5	1.040	1.900	2595	3454	0.26	445.18	PDA Ch2 254nm@4.8nm
6	1.217	2.200	831	923	0.08	152.05	PDA Ch2 254nm@4.8nm

Peak Results
Channel Name: PDA Ch1 214nm@4.8nm

	RT	Width (sec)	Area	Height	% Area	Base Peak (Combined) (m/z)	Channel Name
1	0.805	1.200	1451	2231	0.08	152.90	PDA Ch1 214nm@4.8nm
2	0.862	1.950	2523	3608	0.13	407.15	PDA Ch1 214nm@4.8nm
3	0.959	4.000	1866479	2362179	98.44	151.97	PDA Ch1 214nm@4.8nm
4	1.006	1.400	13069	13815	0.69	445.20	PDA Ch1 214nm@4.8nm
5	1.040	2.000	9074	7790	0.48	445.19	PDA Ch1 214nm@4.8nm
6	1.295	1.900	3494	4649	0.18	153.00	PDA Ch1 214nm@4.8nm

Peak Results
Channel Name: MS TIC

	RT	Width (sec)	Area	Height	% Area	Base Peak (Combined) (m/z)	Channel Name
1	0.964	7.834	733417107	237498344	100.00	445.18	MS TIC

Match Plot

