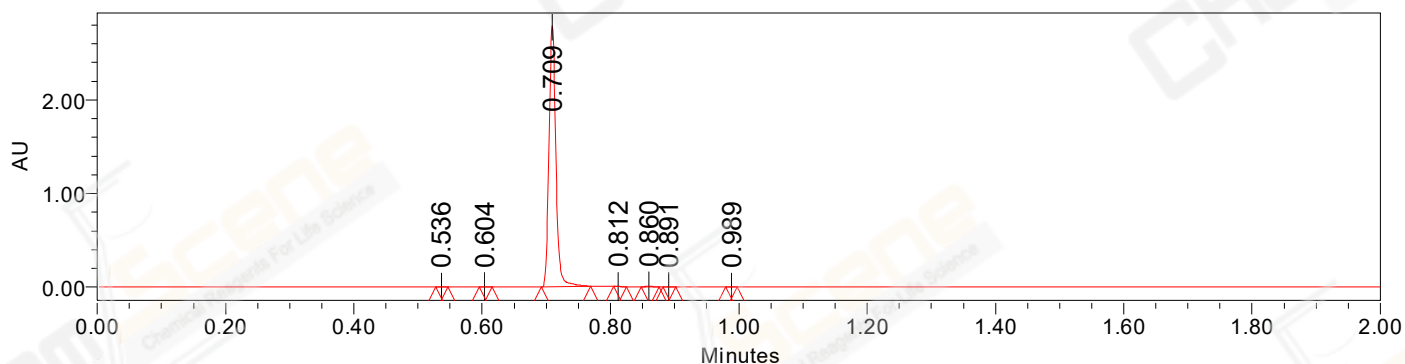


SAMPLE INFORMATION

CAS NO.: 779353-01-4
Sample information:
Vial: 2:B,2
Injection #: 1
Injection Volume: 0.30 ul
Run Time: 2.8 Minutes
Sample Set Name: 20220831

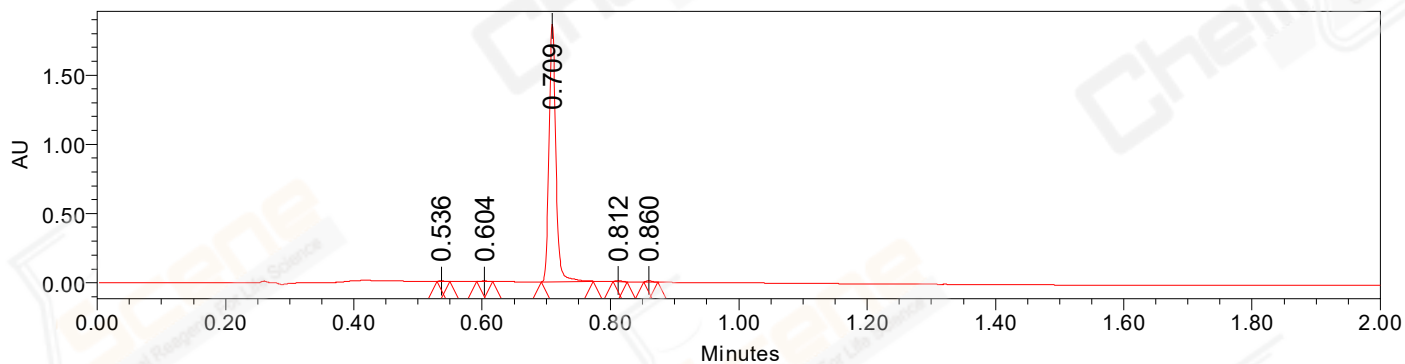
Acquired By: LY
Date Acquired: 8/31/2022 5:52:07 PM CST
Acq. Method Set: 1_POS_2MIN
Date Processed: 9/1/2022 12:37:15 PM CST,
Processing Method: PDA_01, MS_scan
Channel Name: PDA Ch1 214nm@4.8nm, MS TIC,
Column Name: A-RP-985

Auto-Scaled Chromatogram



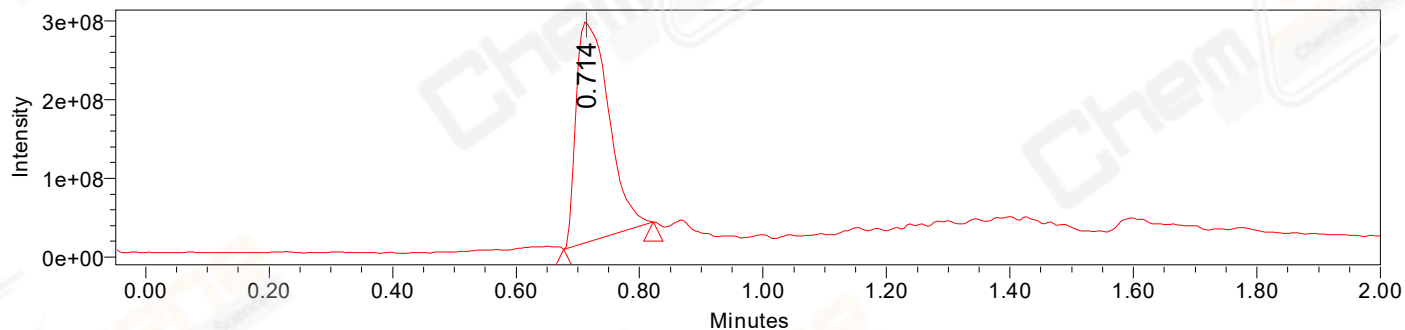
Processed Channel Descr. PDA Ch2 254nm@4.8nm

Auto-Scaled Chromatogram



Processed Channel Descr. PDA Ch1 214nm@4.8nm

Auto-Scaled Chromatogram



Processed Channel Descr. ACQ-SQD2 1: MS Scan MS TIC, Smoothed by 9 point Savitzky-Golay Filter., Time offset by -0.053 mins. (1: 150.00-1000.00 ES+, Centroid, CV=30)

Peak Results
Channel Name: PDA Ch2 254nm@4.8nm

	RT	Width (sec)	Area	Height	% Area	Base Peak (Combined) (m/z)	Channel Name
1	0.536	1.150	1401	2444	0.07	151.90	PDA Ch2 254nm@4.8nm
2	0.604	1.200	1990	3786	0.09	299.12	PDA Ch2 254nm@4.8nm
3	0.709	4.650	2087417	2785708	99.44	151.01	PDA Ch2 254nm@4.8nm
4	0.812	1.200	913	1619	0.04	211.57	PDA Ch2 254nm@4.8nm
5	0.860	1.700	6271	9431	0.30	239.68	PDA Ch2 254nm@4.8nm
6	0.891	1.200	710	1126	0.03	153.01	PDA Ch2 254nm@4.8nm
7	0.989	1.100	446	751	0.02	153.09	PDA Ch2 254nm@4.8nm

Peak Results
Channel Name: PDA Ch1 214nm@4.8nm

	RT	Width (sec)	Area	Height	% Area	Base Peak (Combined) (m/z)	Channel Name
1	0.536	1.250	1801	3179	0.13	152.05	PDA Ch1 214nm@4.8nm
2	0.604	1.500	2760	4581	0.20	299.13	PDA Ch1 214nm@4.8nm
3	0.709	4.900	1376022	1858374	99.01	151.01	PDA Ch1 214nm@4.8nm
4	0.812	1.300	3842	6410	0.28	211.56	PDA Ch1 214nm@4.8nm
5	0.860	1.300	5362	8686	0.39	304.06	PDA Ch1 214nm@4.8nm

Peak Results
Channel Name: MS TIC

	RT	Width (sec)	Area	Height	% Area	Base Peak (Combined) (m/z)	Channel Name
1	0.714	8.704	1021110147	281901666	100.00	397.24	MS TIC

Match Plot

