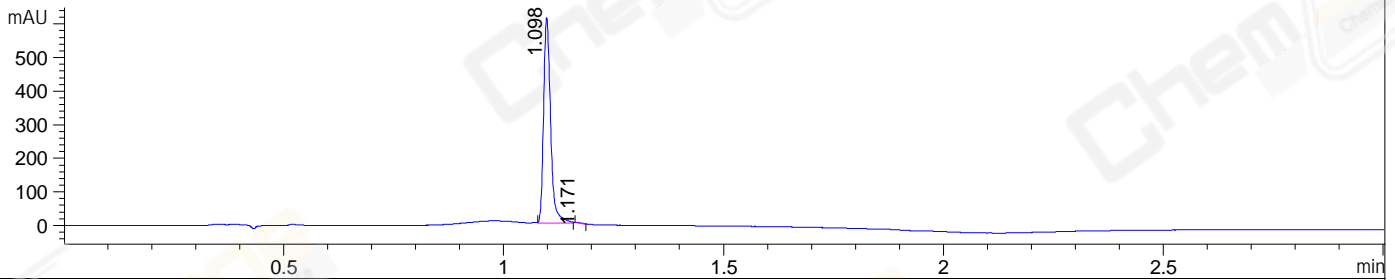


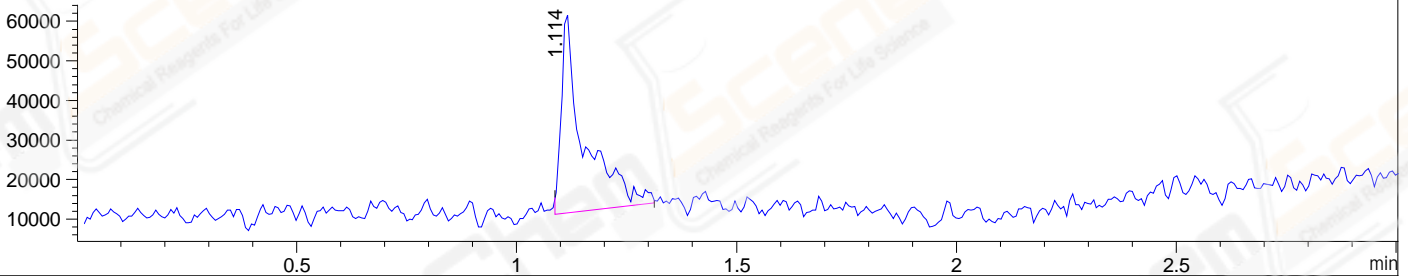
File ..\DATA\2019\20190308\548\CPK2019-307-21295.D Tgt Mass (CHM):

Injection Date : 8 Mar 19 1:38 pm +0800 Seq. Line : 26
 Sample Name : CPK2019-307-21295 Location : P1-E-05
 Acq. Operator : LQ_1052 Inj : 1
 Spec. Reported : MS Integration Inj Volume : 1 ul
 Acq. Method : D:\Chem32\1\data\2019\20190308\548\1-POS-3MIN-1(110-1500).M
 Analysis Method : D:\CHEM32\1\DATA\2019\20190308\548\1-POS-3MIN-1(110-1500).M
 Catalog No : CS-5742 Batch#21295
 Method Info : Mobile Phase: A: water(0.01%TFA) B:ACN(0.01%TFA)
 Gradient: 5% to 95%B within 1.3 min
 Flow Rate :1.8ml/min
 Column :SunFire C18, 4.6*50mm,3.5um A-RP-314
 Oven Temperature : 45C

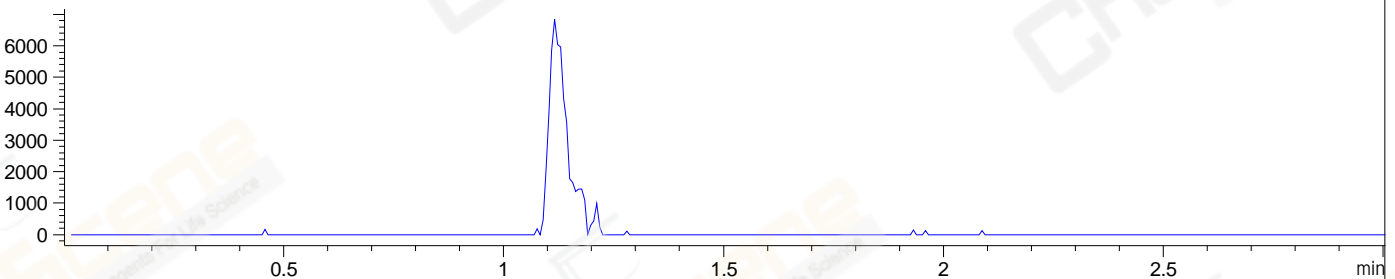
DAD1 B, Sig=214,4 Ref=off



MSD1 TIC, MS File ES-API, Pos, Scan, Frag: 70



Ion 1085.3, MSD1 1085.3, Target Mass 1084.3 +H Positive, EIC=1085:1086



Integration Results for DAD1 B, Sig=214,4 Ref=off

RetTim	Width	Area	Height	Area%	MS (+)
1.10	0.02	680.05	610.47	99.82	543
1.17	0.02	1.21	1.09	0.18	1084

Integration Results for MSD1 TIC, MS File

RetTim	Width	Area	Height	Area%	MS (+)
1.11	0.05	183451.56	50790.11	100.00	543

Ret. Time: 1.11

<<<< POSITIVE SPECTRA >>>>

ES-API Positive

