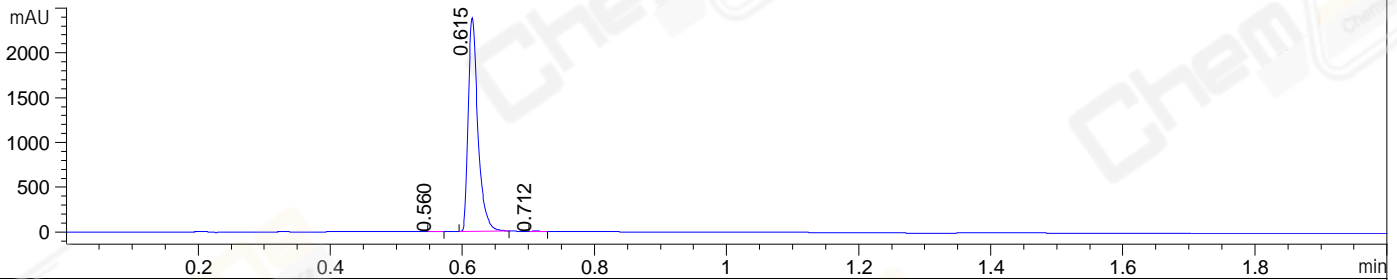
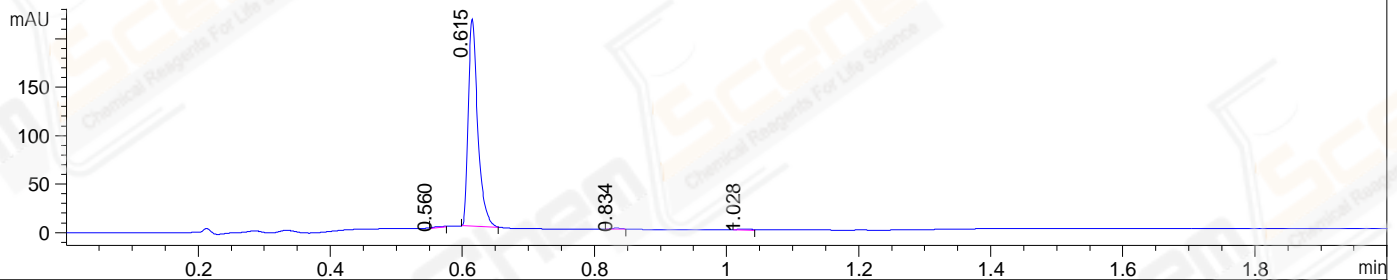


File ..09-03\BIZ2022-902-YPJ11-UPLC-MS-05-006966.D Tgt Mass (EZX):
 Injection Date : 03-Sep-22, 15:33:41 Seq. Line : 0
 Sample Name : BIZ2022-902-YPJ11 Location : P1-F-03
 Acq. Operator : LY_2287 Inj : 1
 Spec. Reported : MS Integration Inj Volume : 0.5 ul
 Acq. Method : D:\methods\1-POS-UPLC2.0MIN-(0.8)(150-1000).M
 Analysis Method : D:\METHODS\1-POS-UPLC2.0MIN-(0.8)(150-1000).M
 CAS NO. : 130405-40-2 WalkUp method: '1-POS-2MIN' Project: HY-N0356
 Method Info : Mobile Phase: A: water(0.01%TFA) B:ACN(0.01%TFA)
 Gradient: 5% to 95%B within 1.3 min
 Flow Rate : 0.8ml/min
 Column :Poroshell 120 EC- C18, 2.1*50mm,1.9um A-RP-750
 Oven Temperature : 45C

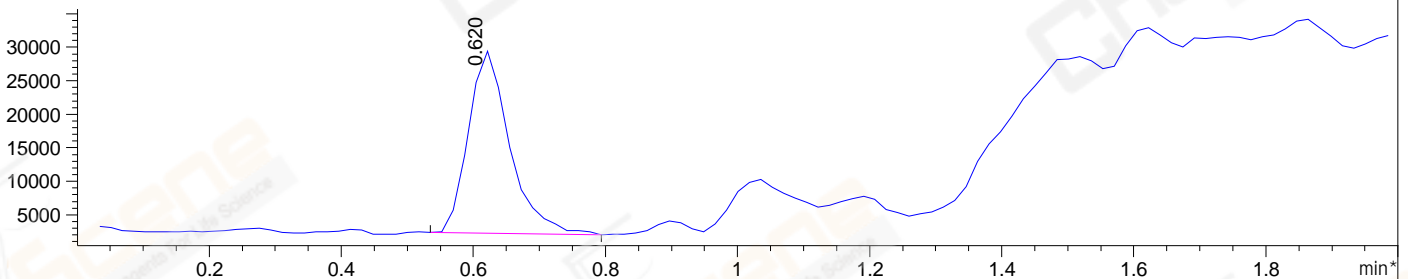
DAD1 A, Sig=214,4 Ref=off



DAD1 B, Sig=254,4 Ref=off



*MSD1 TIC, MS File ES-API, Pos, Scan, Frag: 70



Integration Results for DAD1 A, Sig=214,4 Ref=off

| RetTim | Width | Area | Height | Area% | MS (+) |
|--------|-------|---------|---------|-------|--------|
| 0.56 | 0.01 | 2.42 | 2.97 | 0.10 | ND |
| 0.62 | 0.02 | 2435.00 | 2388.11 | 99.74 | 443 |
| 0.71 | 0.02 | 3.95 | 4.16 | 0.16 | ND |

Integration Results for DAD1 B, Sig=254,4 Ref=off

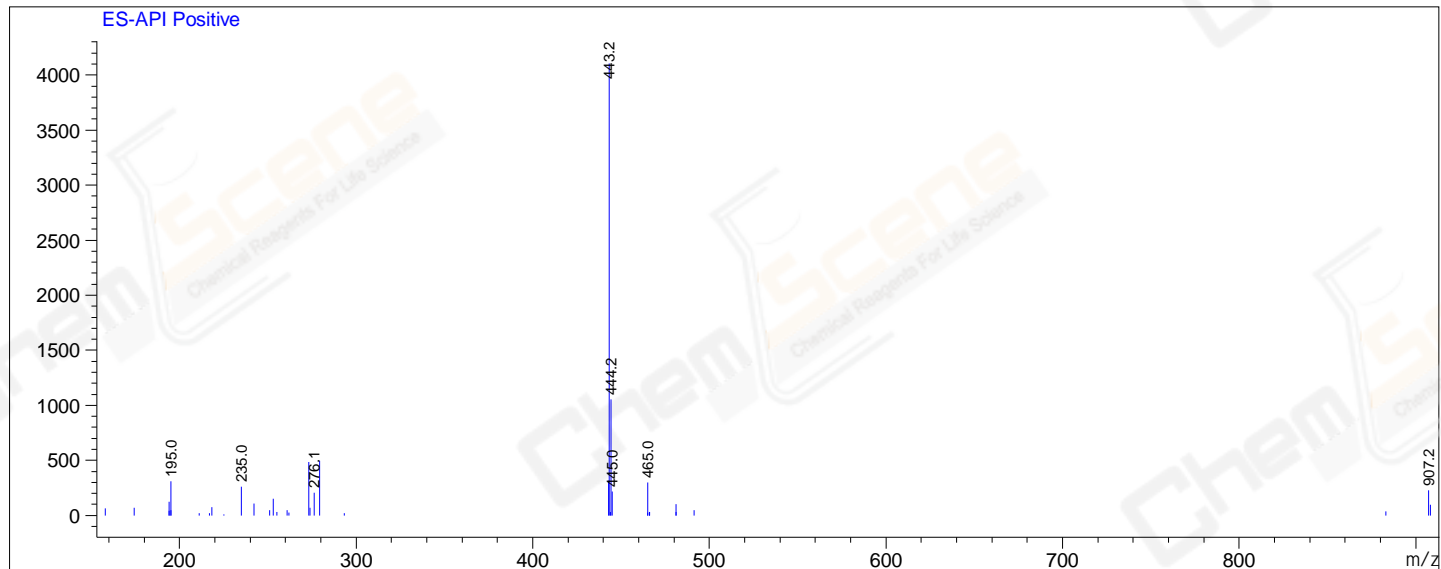
| RetTim | Width | Area | Height | Area% | MS (+) |
|--------|-------|--------|--------|-------|--------|
| 0.56 | 0.02 | 1.00 | 0.93 | 0.46 | ND |
| 0.61 | 0.02 | 212.67 | 214.31 | 98.22 | 443 |
| 0.83 | 0.02 | 1.32 | 1.13 | 0.61 | ND |
| 1.03 | 0.02 | 1.53 | 1.15 | 0.71 | ND |

Integration Results for MSD1 TIC, MS File

| RetTim | Width | Area | Height | Area% | MS (+) |
|--------|-------|-----------|----------|--------|--------|
| 0.62 | 0.07 | 119096.14 | 27164.98 | 100.00 | 443 |

Ret. Time: 0.62

<<<< POSITIVE SPECTRA >>>>



*** End of Report ***