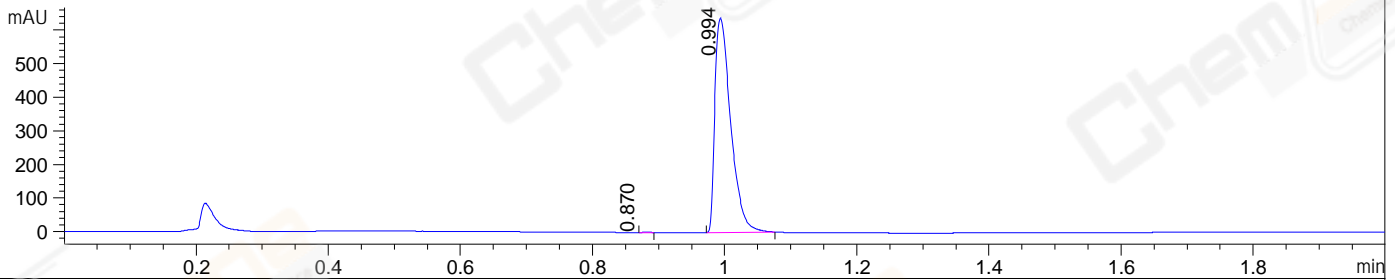
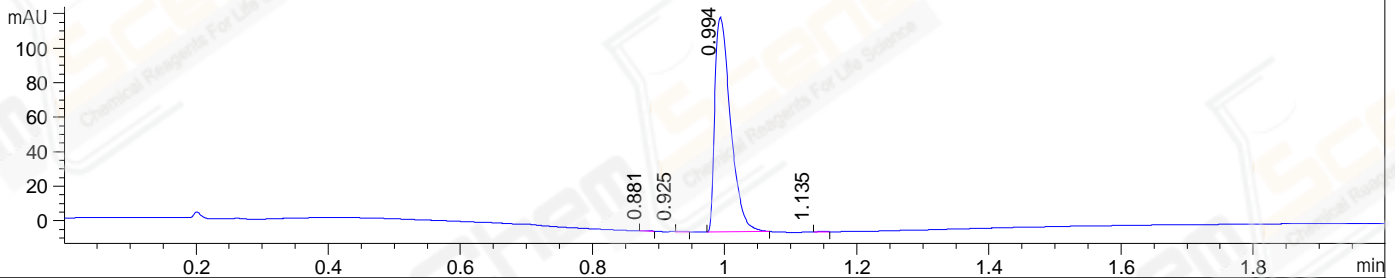


File ..-08-29\HP14199-001-7-UPLC-MS-01-000007576.D Tgt Mass (EZX):  
 Injection Date : 29 Aug 22 4:57 pm +0800 Seq. Line : 0  
 Sample Name : HP14199-001-7 Location : P2-A-11  
 Acq. Operator : LY\_2278 Inj : 1  
 Spec. Reported : MS Integration Inj Volume : 0.2 ul  
 Acq. Method : D:\LCMS\Methods\1-POS-UPLC2.0MIN(0.8ML)-(150-1000).M  
 Analysis Method : D:\LCMS\METHODS\1-POS-UPLC2.0MIN(0.8ML)-(150-1000).M  
 CAS NO. : 1217457-86-7 Walkup method: '1-POS-2MIN' Project: LD1460 Target:  
 Method Info : Mobile Phase: A: water(0.01%TFA) B:ACN(0.01%TFA)  
 Gradient: 5% to 95%B within 0.6 min  
 Flow Rate : 0.8ml/min  
 Column :Poroshell 120 EC- C18, 2.1\*50mm,1.9um A-RP-517  
 Oven Temperature : 45C

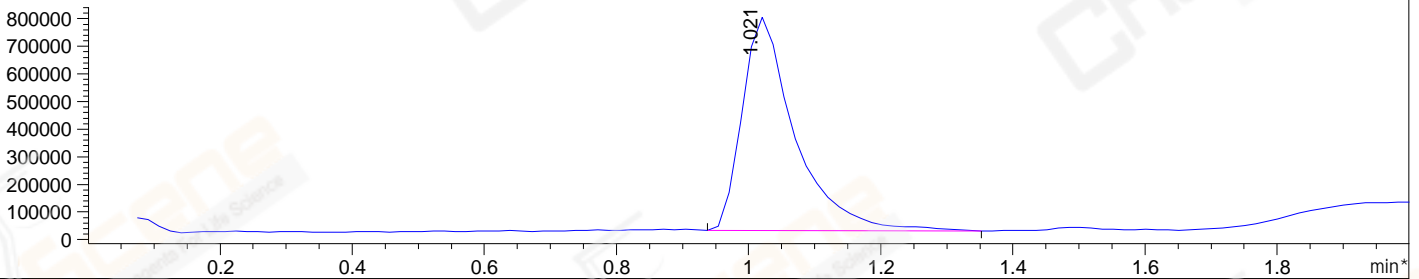
DAD1 A, Sig=214,4 Ref=off



DAD1 B, Sig=254,4 Ref=off



\*MSD1 TIC, MS File ES-API, Pos, Scan, Frag: 70



Integration Results for DAD1 A, Sig=214,4 Ref=off

RetTim	Width	Area	Height	Area%	MS(+)
0.87	0.01	1.37	0.19	0.13	480
0.99	0.03	1065.06	639.22	99.87	981

Integration Results for DAD1 B, Sig=254,4 Ref=off

RetTim	Width	Area	Height	Area%	MS(+)
0.88	0.01	0.37	0.42	0.18	480
0.93	0.01	0.28	0.11	0.13	480
0.99	0.03	206.16	124.45	99.50	981
1.13	0.01	0.39	0.00	0.19	161

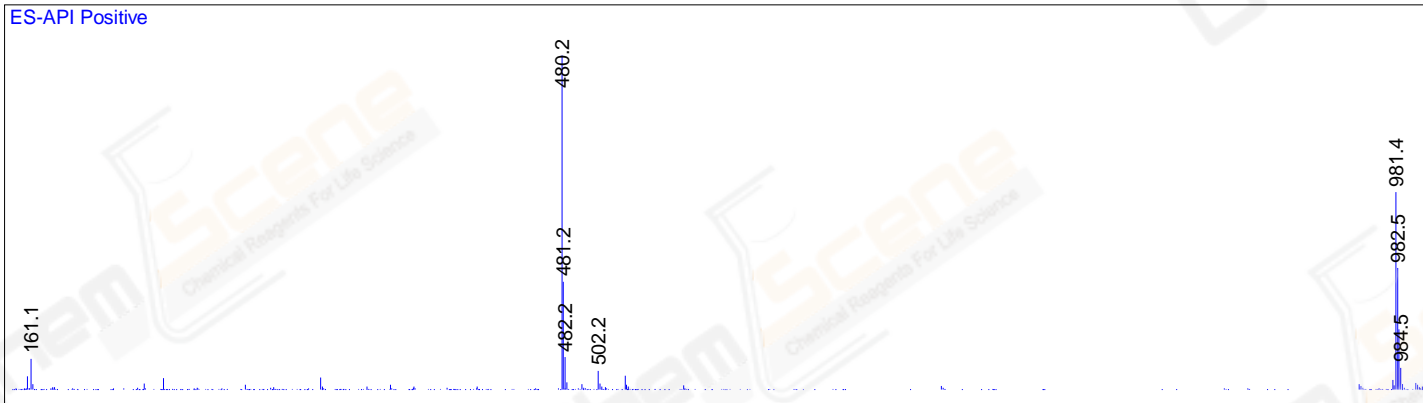
Integration Results for MSD1 TIC, MS File

RetTim	Width	Area	Height	Area%	MS(+)
1.02	0.08	4302914.50	771633.88	100.00	480

Ret. Time: 1.02

<<<< POSITIVE SPECTRA >>>>

ES-API Positive



\*\*\* End of Report \*\*\*