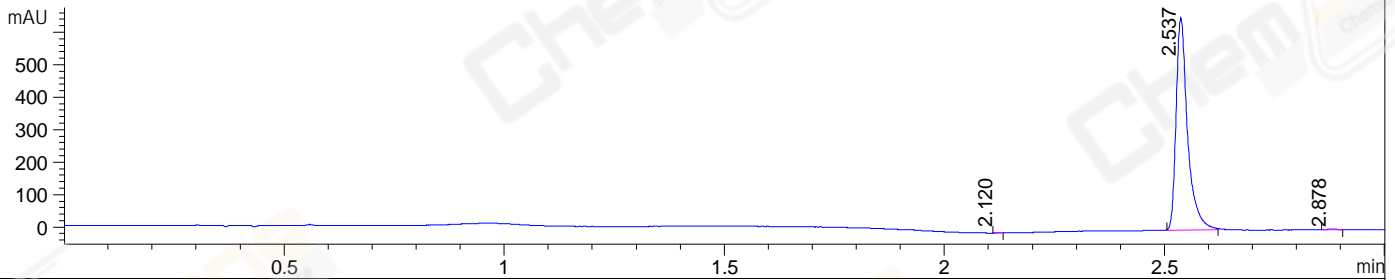
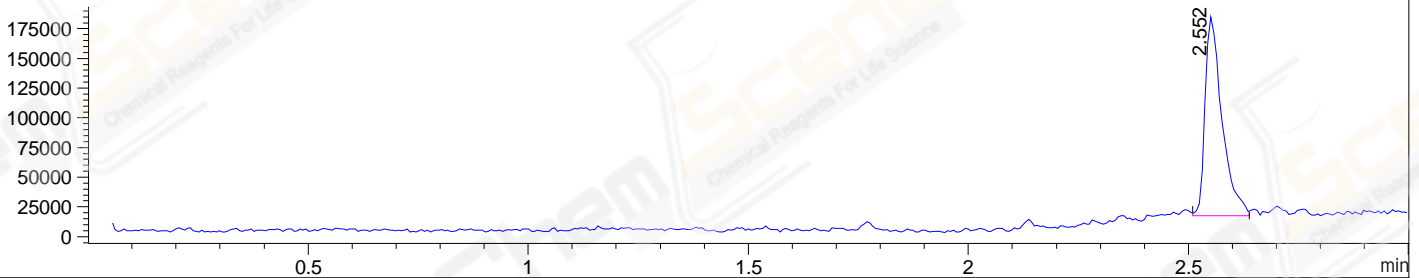


File ..\DATA\2019\20190509\567\CPK2019-506-21379.D Tgt Mass (CHM):
Injection Date : 9 May 19 4:49 pm +0800 Seq. Line : 91
Sample Name : CPK2019-506-21379 Location : P2-F-03
Acq. Operator : LQ_1052 Inj : 1
Spec. Reported : MS Integration Inj Volume : 1 ul
Acq. Method : D:\Chem32\1\data\2019\20190509\567\1-POS-3MIN-1.M
Analysis Method : D:\CHEM32\1\DATA\2019\20190509\567\1-POS-3MIN-1.M
Catalog No : CS-5755 Batch#21379
Method Info : Mobile Phase: A: water(0.01%TFA) B:ACN(0.01%TFA)
Gradient: 5% to 95%B within 1.3 min
Flow Rate :1.8ml/min
Column :SunFire C18, 4.6*50mm,3.5um A-RP-322
Oven Temperature : 45

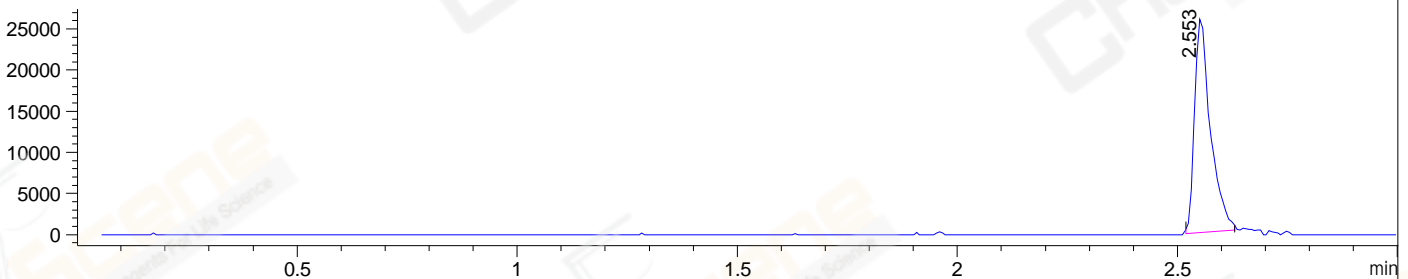
DAD1 B, Sig=214,4 Ref=off



MSD1 TIC, MS File ES-API, Pos, Scan, Frag: 70



Ion 473.1, MSD1 473.1, Target Mass 472.1 +H Positive, EIC=472.8:473.8



Integration Results for DAD1 B, Sig=214,4 Ref=off

RetTim	Width	Area	Height	Area%	MS (+)
2.12	0.01	0.79	1.12	0.07	260
2.54	0.03	1189.89	653.08	99.74	472
2.88	0.03	2.36	1.54	0.20	253

Integration Results for MSD1 TIC, MS File

RetTim	Width	Area	Height	Area%	MS (+)
2.55	0.04	447125.94	167200.44	100.00	472

Ret. Time: 2.55

<<<< POSITIVE SPECTRA >>>>

ES-API Positive

