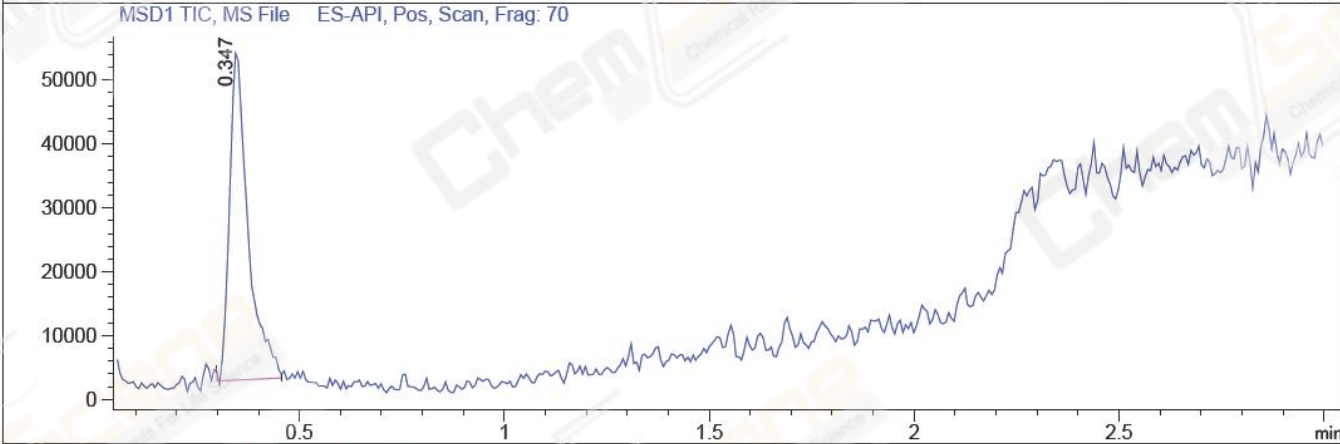
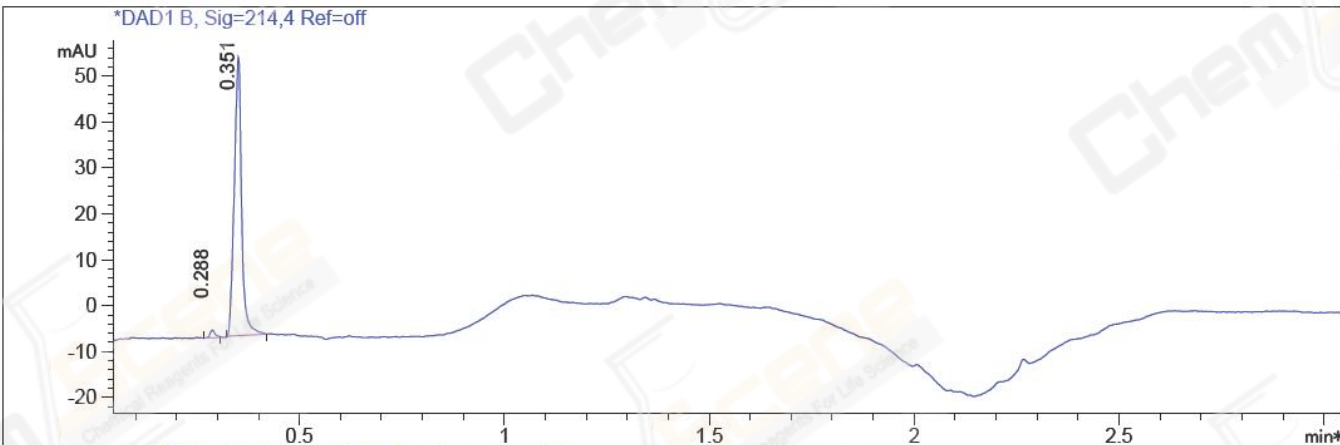


File D:\CHEM32\1\DATA\HEC\NZZ3667-01-7.D Tgt Mass (EZ):
 Injection Date : 26 Aug 16 2:26 pm +0800 Seq. Line : 0
 Sample Name : NZZ3667-01-7 Location : P1-E-09
 Acq. Operator : KFF (LCMS-02) Inj : 1
 Spec. Reported : MS Integration Inj Volume : 2 ul
 Acq. Method : D:\Chem32\1\METHODS\1-POS-3MIN.M
 Analysis Method : D:\CHEM32\1\METHODS\1-POS-3MIN-PROSRSS.M
 Catalog No : CS-0878 Batch#21522 Easy-Access Method: '1-POS-3MIN'
 Method Info : Mobile Phase: A: water(0.01%TFA) B:ACN(0.01%TFA)
 Gradient: 5% to 95%B within 1.3 min
 Flow Rate :1.8ml/min
 Column :SunFire C18, 4.6*50mm,3.5um A-RP-186
 Oven Temperature : 45C



Integration Results for DAD1 B, Sig=214,4 Ref=off

RetTim	Width	Area	Height	Area%	MS(+)
0.29	0.01	1.42	1.64	1.84	ND
0.35	0.02	75.72	60.80	98.16	248

Ret. Time: 0.35

<<<< POSITIVE SPECTRA >>>>

