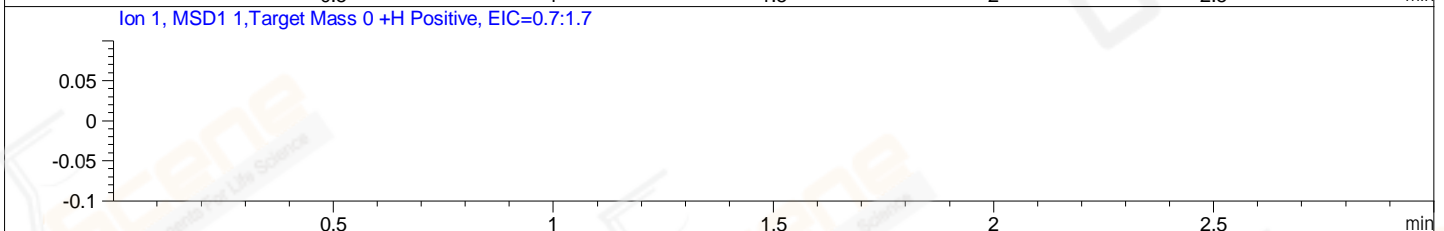
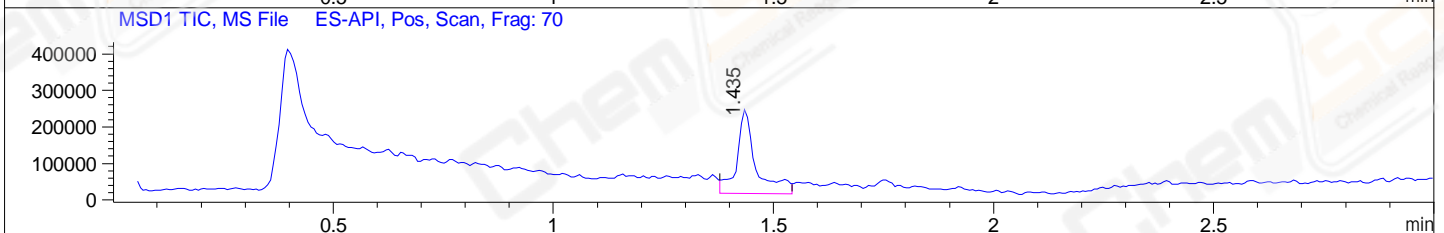
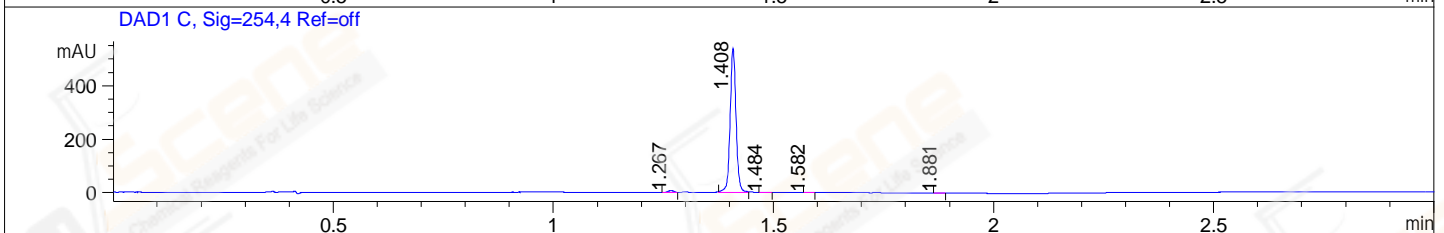
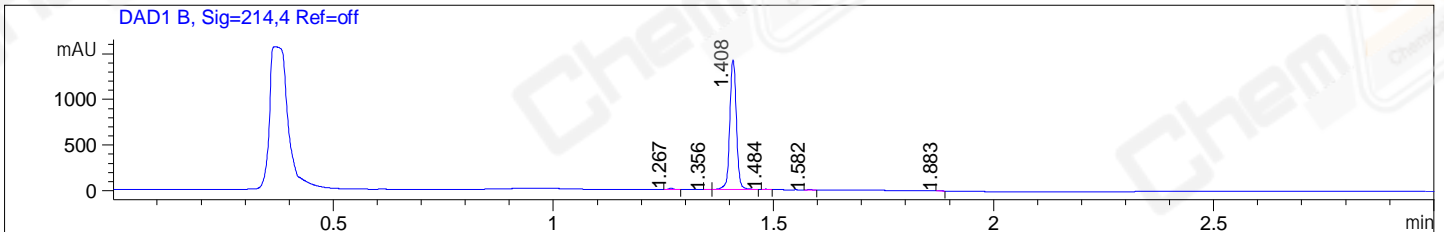


File ..\DATA\2018\20181016\467\CPK2018-016-21608.D Tgt Mass (CHM):
 Injection Date : 16 Oct 18 2:07 pm +0800 Seq. Line : 31
 Sample Name : CPK2018-016-21608 Location : P2-E-08
 Acq. Operator : LQ_1052 Inj : 1
 Spec. Reported : MS Integration Inj Volume : 1 ul
 Acq. Method : D:\Chem32\1\data\2018\20181016\467\1-POS-3MIN-1.M
 Analysis Method : D:\CHEM32\1\DATA\2018\20181016\467\1-POS-3MIN-1.M
 Catalog No : CS-5488 Batch#21608 A-RP-314
 Method Info : Mobile Phase: A: water(0.01%TFA) B:ACN(0.01%TFA)
 Gradient: 5% to 95%B within 1.3 min
 Flow Rate :1.8ml/min
 Column :SunFire C18, 4.6*50mm,3.5um A-RP-314
 Oven Temperature : 45□



Integration Results for DAD1 B, Sig=214,4 Ref=off

RetTim	Width	Area	Height	Area%	MS (+)
1.27	0.01	12.94	15.37	0.86	157
1.36	0.01	1.03	1.34	0.07	157
1.41	0.02	1490.23	1423.01	98.72	262
1.48	0.01	3.25	4.32	0.22	262
1.58	0.01	1.47	1.66	0.10	157
1.88	0.01	0.58	0.72	0.04	559

Integration Results for DAD1 C, Sig=254,4 Ref=off

RetTim	Width	Area	Height	Area%	MS (+)
1.27	0.01	5.72	7.07	1.12	157
1.41	0.01	503.88	539.81	98.56	262
1.48	0.01	0.69	0.83	0.14	262
1.58	0.01	0.59	0.71	0.12	157
1.88	0.02	0.35	0.35	0.07	559

Integration Results for MSD1 TIC, MS File

1.44 0.04 692227.88 230612.19 100.00 262

RetTim	Width	Area	Height	Area%	MS (+)
--------	-------	------	--------	-------	--------

Ret. Time: 1.44

<<<< POSITIVE SPECTRA >>>>

ES-API Positive

