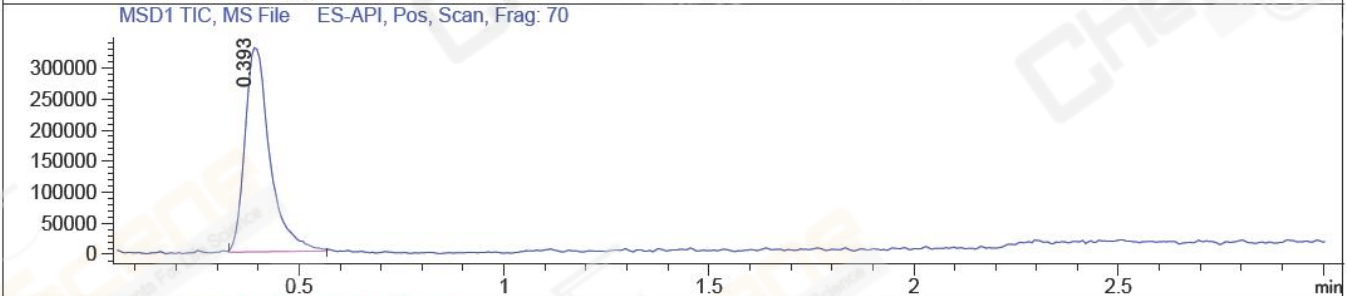
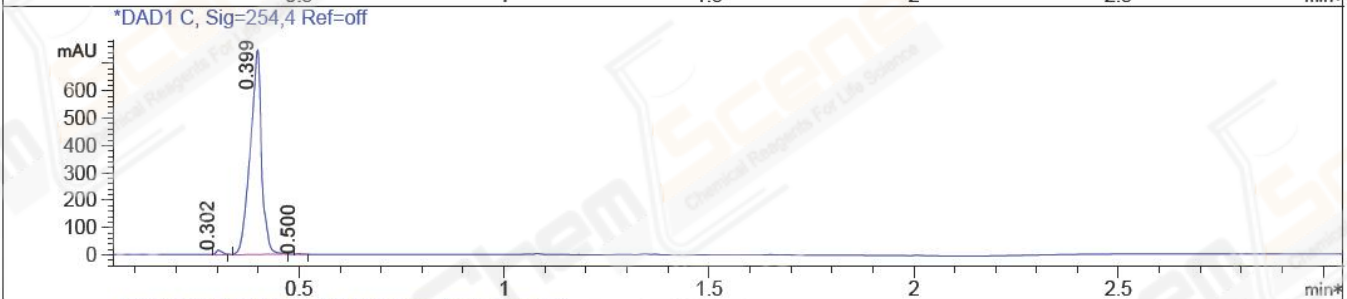
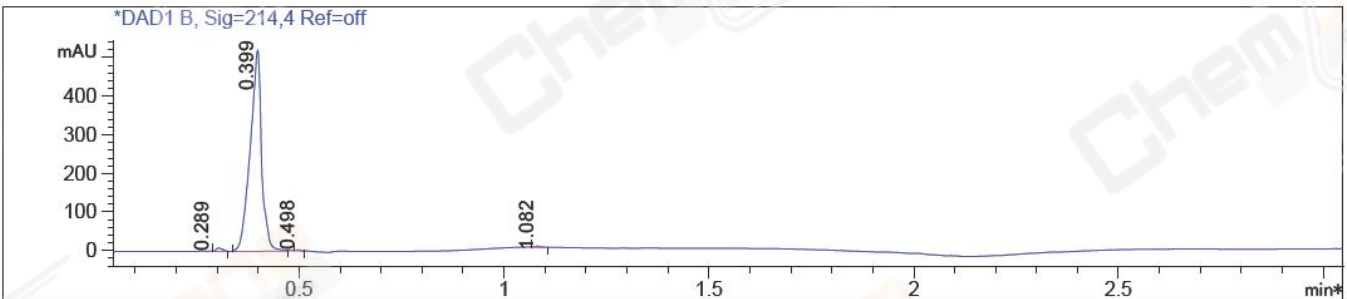


File D:\CHEM32\1\DATA\HEC\NZZ3667-013-1.D Tgt Mass (EZ):  
 Injection Date : 14 Sep 16 3:22 pm +0800 Seq. Line : 0  
 Sample Name : NZZ3667-013-1 Location : P2-C-01  
 Acq. Operator : KFF(LCMS-02) Inj : 1  
 Spec. Reported : MS Integration Inj Volume : 0.5 ul  
 Acq. Method : D:\Chem32\1\METHODS\1-POS-3MIN.M  
 Analysis Method : D:\CHEM32\1\METHODS\1-POS-3MIN-PROSRSS.M  
 Catalog No : CS-0878 Batch#21694 Easy-Access Method: '1-POS-3MIN'  
 Method Info : Mobile Phase: A: water(0.01%TFA) B:ACN(0.01%TFA)  
 Gradient: 5% to 95%B within 1.3 min  
 Flow Rate :1.8ml/min  
 Column :SunFire C18, 4.6\*50mm,3.5um A-RP-186  
 Oven Temperature : 45C



Integration Results for DAD1 B, Sig=214,4 Ref=off

RetTim	Width	Area	Height	Area%	MS (+)
0.29	0.01	8.33	0.04	0.81	ND
0.40	0.03	1014.62	520.81	98.79	248
0.50	0.01	1.66	2.17	0.16	248
1.08	0.01	2.41	2.50	0.24	235

Integration Results for DAD1 C, Sig=254,4 Ref=off

RetTim	Width	Area	Height	Area%	MS (+)
0.30	0.01	16.29	16.36	1.12	ND
0.40	0.03	1440.38	748.41	98.73	248
0.50	0.01	2.20	2.94	0.15	248

Ret. Time: 0.39

<<<< POSITIVE SPECTRA >>>>

