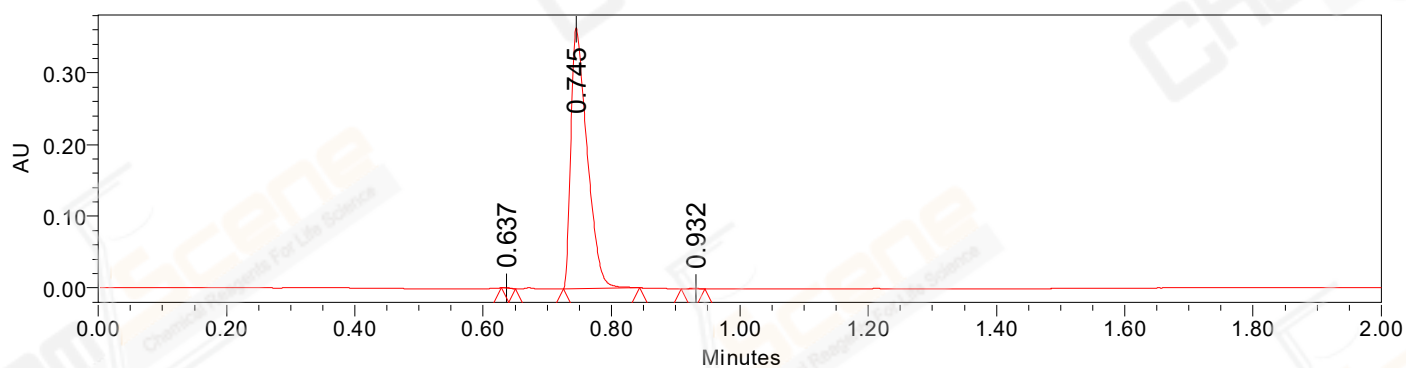


SAMPLE INFORMATION

CAS NO.: 303094-67-9
Sample information:
Vial: 1:B,6
Injection #: 1
Injection Volume: 0.30 ul
Run Time: 2.8 Minutes
Sample Set Name: 20220913

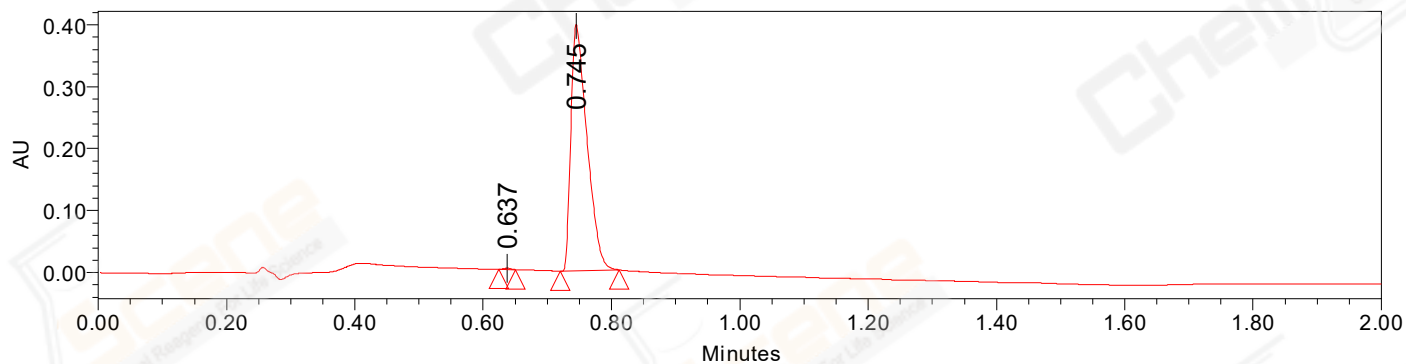
Acquired By: LY
Date Acquired: 9/13/2022 2:47:18 PM CST
Acq. Method Set: 1_POS_2MIN
Date Processed: 9/14/2022 9:41:52 AM CST,
Processing Method: PDA_01, MS_scan
Channel Name: PDA Ch1 214nm@4.8nm, MS TIC,
Column Name: A-RP-985

Auto-Scaled Chromatogram



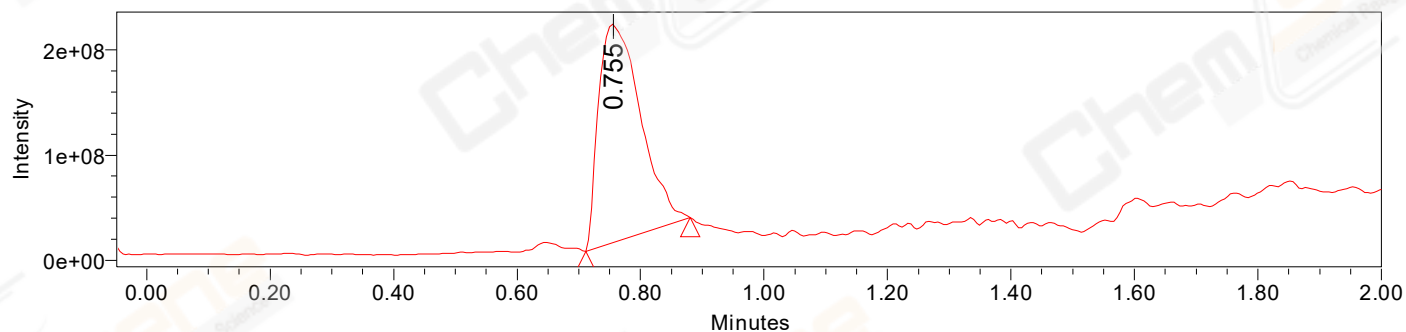
Processed Channel Descr. PDA Ch2 254nm@4.8nm

Auto-Scaled Chromatogram



Processed Channel Descr. PDA Ch1 214nm@4.8nm

Auto-Scaled Chromatogram



Processed Channel Descr. ACQ-SQD2 1: MS Scan MS TIC, Smoothed by 9 point Savitzky-Golay Filter., Time offset by -0.053 mins. (1: 150.00-1000.00 ES+, Centroid, CV=30)

Peak Results
Channel Name: PDA Ch2 254nm@4.8nm

	RT	Width (sec)	Area	Height	% Area	Base Peak (Combined) (m/z)	Channel Name
1	0.637	1.300	597	880	0.09	151.93	PDA Ch2 254nm@4.8nm
2	0.745	7.150	636664	363447	99.80	310.08	PDA Ch2 254nm@4.8nm
3	0.932	2.200	665	532	0.10	311.10	PDA Ch2 254nm@4.8nm

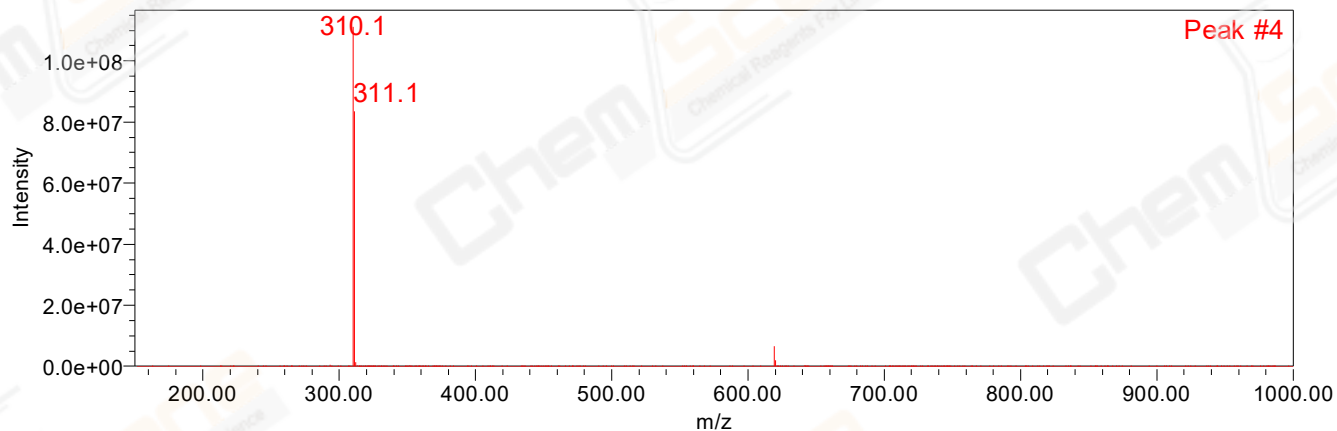
Peak Results
Channel Name: PDA Ch1 214nm@4.8nm

	RT	Width (sec)	Area	Height	% Area	Base Peak (Combined) (m/z)	Channel Name
1	0.637	1.550	1563	2047	0.23	151.91	PDA Ch1 214nm@4.8nm
2	0.745	5.500	692309	397850	99.77	151.06	PDA Ch1 214nm@4.8nm

Peak Results
Channel Name: MS TIC

	RT	Width (sec)	Area	Height	% Area	Base Peak (Combined) (m/z)	Channel Name
1	0.755	10.156	974788379	207246756	100.00	310.08	MS TIC

Match Plot



Retention Time 0.755 Channel Name MS TIC