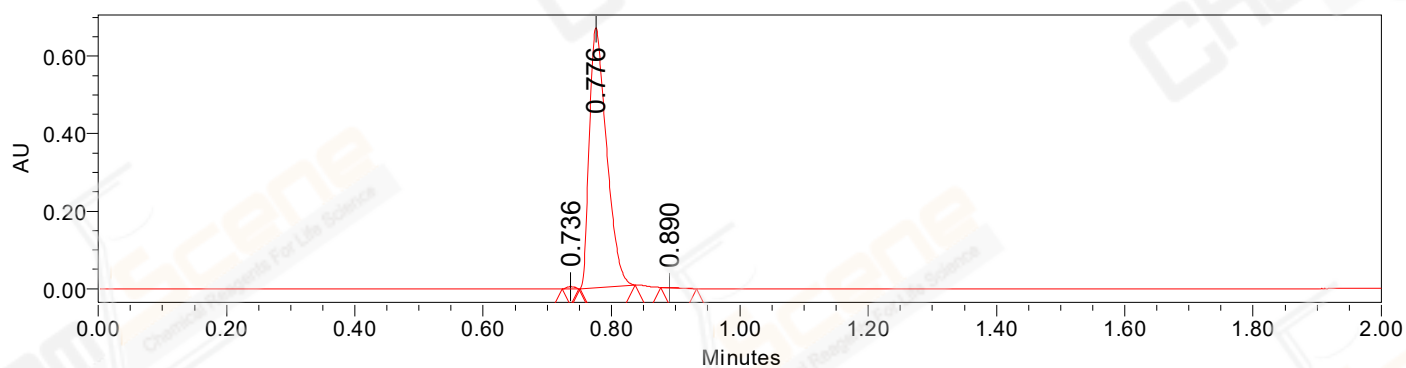


SAMPLE INFORMATION

Sample Name: BIZ2022-913-YPJ16
CAS NO.: 62669-70-9
Vial: 2:E,2
Injection #: 1
Injection Volume: 0.30 ul
Run Time: 2.8 Minutes
Sample Set Name: 20220914

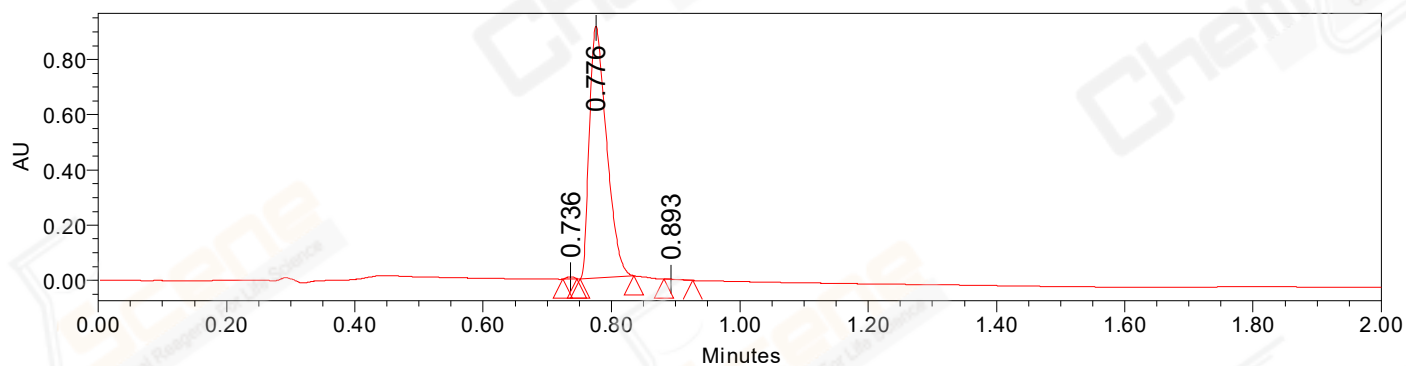
Acquired By: LY
Date Acquired: 9/14/2022 2:02:37 PM CST
Acq. Method Set: 1_POS_2MIN
Date Processed: 9/15/2022 10:27:40 AM CST,
Processing Method: PDA_01, MS_scan
Channel Name: PDA Ch1 214nm@4.8nm, MS TIC,
Column Name: A-RP-985

Auto-Scaled Chromatogram



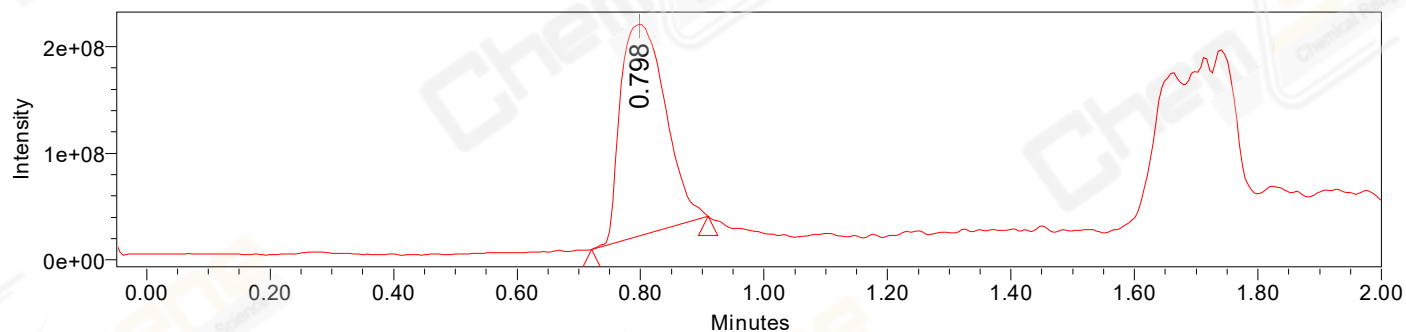
Processed Channel Descr. PDA Ch2 254nm@4.8nm

Auto-Scaled Chromatogram



Processed Channel Descr. PDA Ch1 214nm@4.8nm

Auto-Scaled Chromatogram



Processed Channel Descr. ACQ-SQD2 1: MS Scan MS TIC, Smoothed by 9 point Savitzky-Golay Filter., Time offset by -0.053 mins. (1: 150.00-1000.00 ES+, Centroid, CV=30)

Peak Results
Channel Name: PDA Ch2 254nm@4.8nm

	RT	Width (sec)	Area	Height	% Area	Base Peak (Combined) (m/z)	Channel Name
1	0.736	1.550	5096	5877	0.41	152.01	PDA Ch2 254nm@4.8nm
2	0.776	5.150	1248174	669978	99.53	331.10	PDA Ch2 254nm@4.8nm
3	0.890	3.350	833	560	0.07	359.11	PDA Ch2 254nm@4.8nm

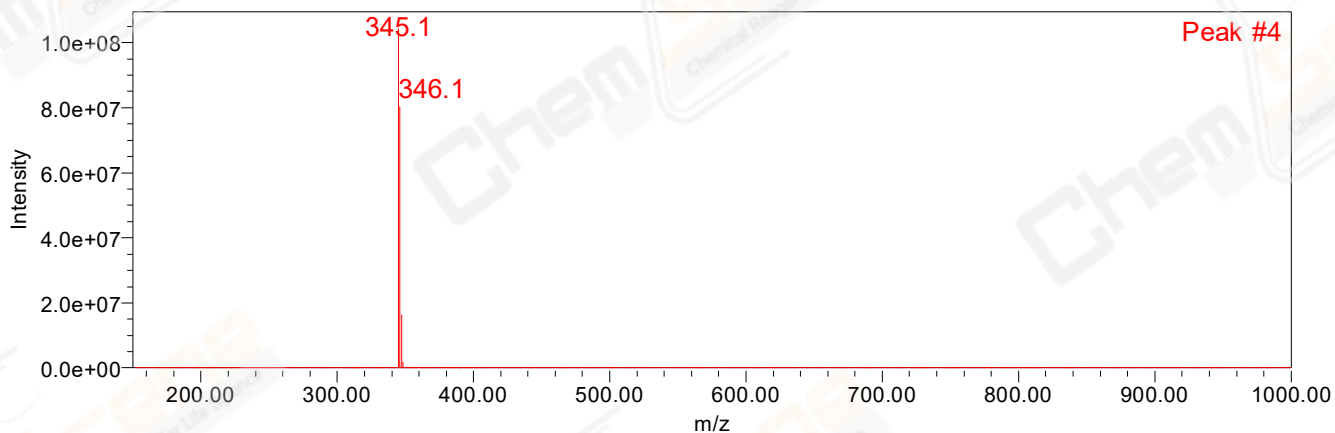
Peak Results
Channel Name: PDA Ch1 214nm@4.8nm

	RT	Width (sec)	Area	Height	% Area	Base Peak (Combined) (m/z)	Channel Name
1	0.736	1.350	6002	7504	0.35	151.90	PDA Ch1 214nm@4.8nm
2	0.776	5.050	1700331	911970	99.61	331.10	PDA Ch1 214nm@4.8nm
3	0.893	2.700	625	375	0.04	359.11	PDA Ch1 214nm@4.8nm

Peak Results
Channel Name: MS TIC

	RT	Width (sec)	Area	Height	% Area	Base Peak (Combined) (m/z)	Channel Name
1	0.798	11.316	1001929890	198986180	100.00	345.13	MS TIC

Match Plot



Retention Time 0.798 Channel Name MS TIC