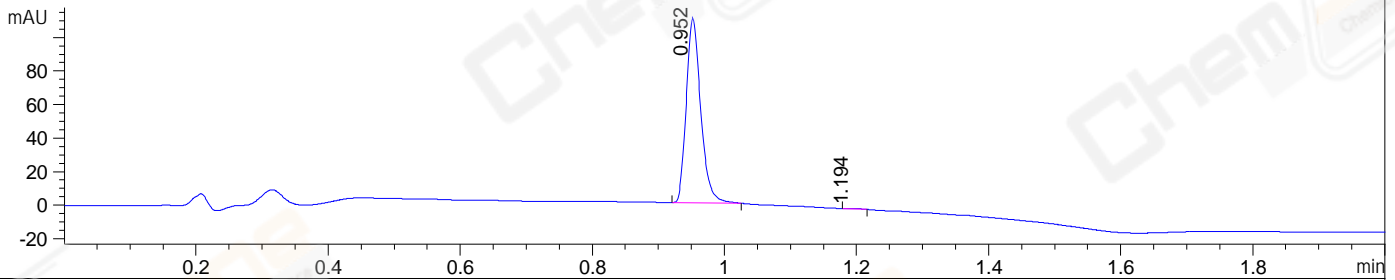
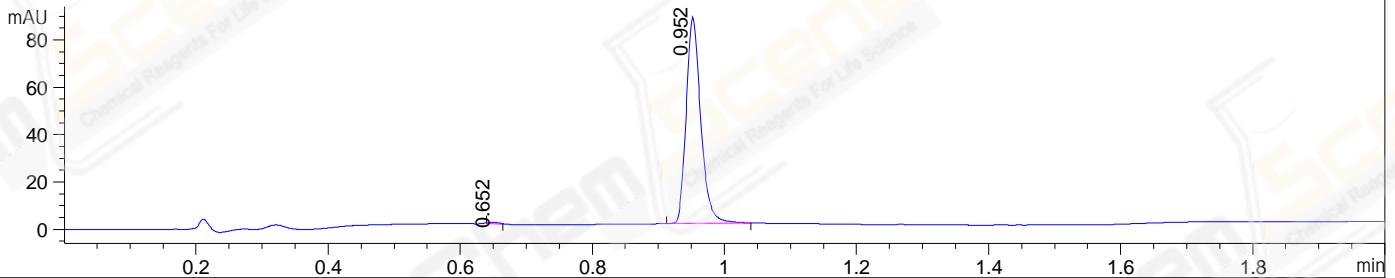


File ..22-08-23\WGY13663-005-1-UPLC-MS-04-028536.D Tgt Mass (EZ):
 Injection Date : 23-Aug-22, 12:02:19 Seq. Line : 0
 Sample Name : WGY13663-005-1 Location : P1-D-10
 Acq. Operator : LY_2278 Inj : 1
 Spec. Reported : MS Integration Inj Volume : 0.2 ul
 Acq. Method : E:\Chem32\1\Methods\1-POS-UPLC2.0MIN(0.8)(150-1000).M
 Analysis Method : E:\CHEM32\1\METHODS\1-POS-UPLC2.0MIN(0.8)(150-1000).M
 CAS NO. : 911222-45-2 WalkUp method: '1-POS-2MIN' Project: LD1424 Target:
 Method Info : Mobile Phase: A: water(0.01%TFA) B:ACN(0.01%TFA)
 Gradient: 5% to 95%B within 1.3 min
 Flow Rate : 0.8ml/min
 Column : Poroshell 120 EC- C18, 2.1*50mm,1.9um
 Oven Temperature : 45C

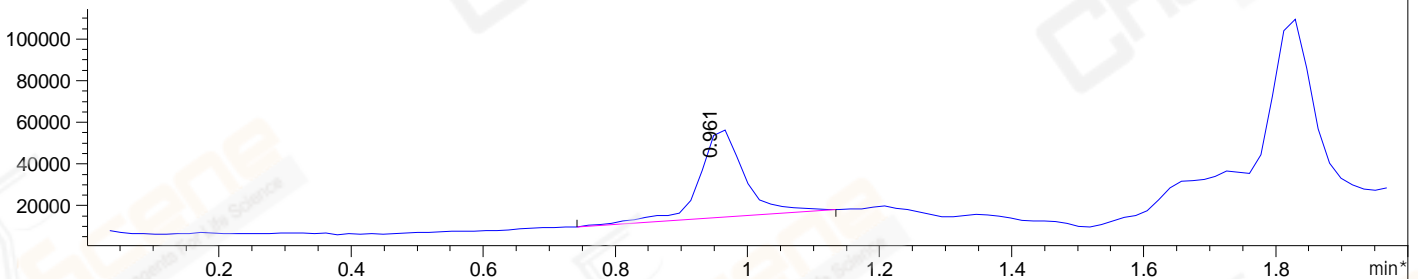
DAD1 A, Sig=214,4 Ref=off



DAD1 B, Sig=254,4 Ref=off



*MSD1 TIC, MS File ES-API, Pos, Scan, Frag: 70



Integration Results for DAD1 A, Sig=214,4 Ref=off

RetTim	Width	Area	Height	Area%	MS (+)
0.95	0.03	168.00	110.37	99.65	447
1.19	0.02	0.59	0.41	0.35	447

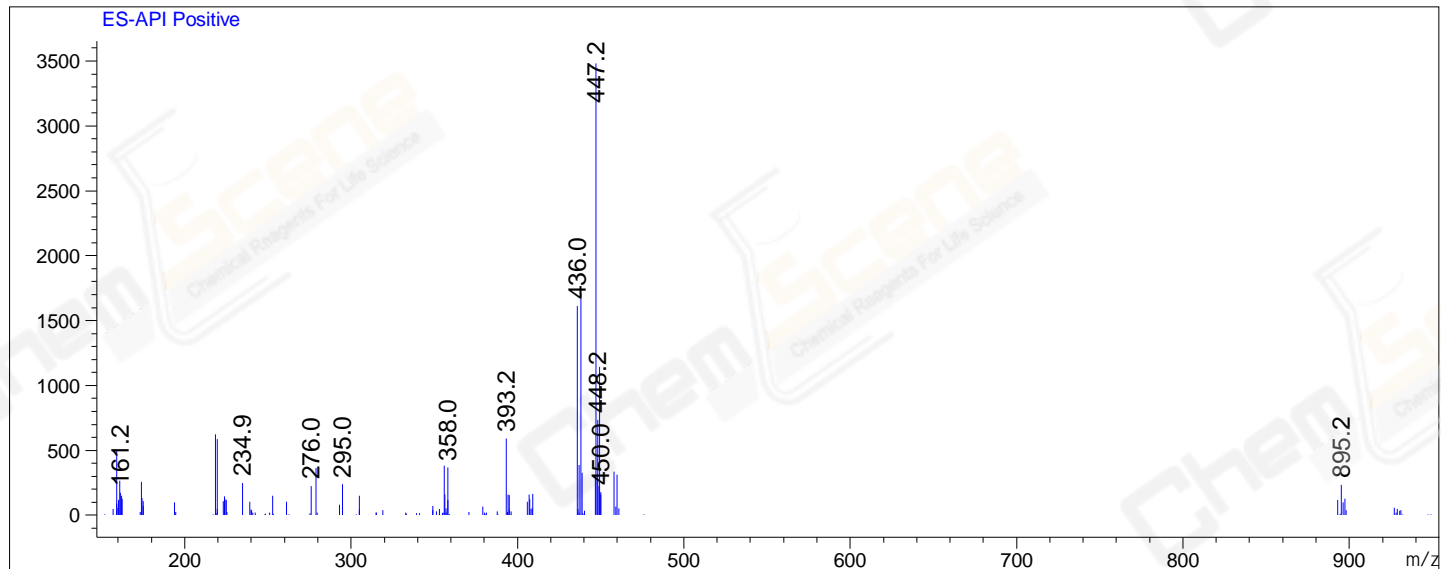
Integration Results for DAD1 B, Sig=254,4 Ref=off

RetTim	Width	Area	Height	Area%	MS (+)
0.65	0.02	0.65	0.60	0.48	ND
0.95	0.03	133.77	87.21	99.52	447

Integration Results for MSD1 TIC, MS File

RetTim	Width	Area	Height	Area%	MS (+)
0.96	0.07	200295.52	42752.23	100.00	447

Ret. Time: 0.96 <<<< POSITIVE SPECTRA >>>>



*** End of Report ***