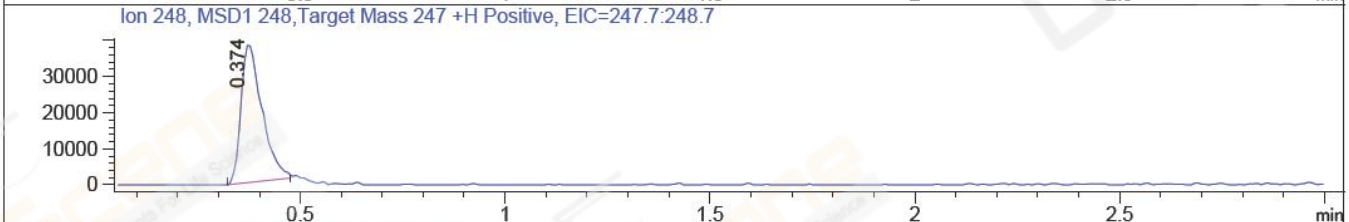
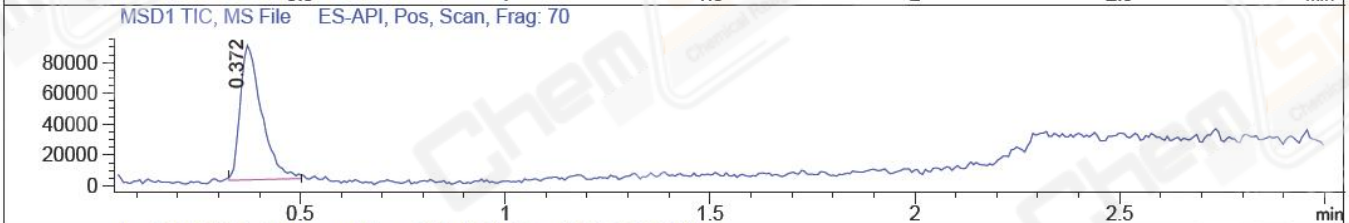
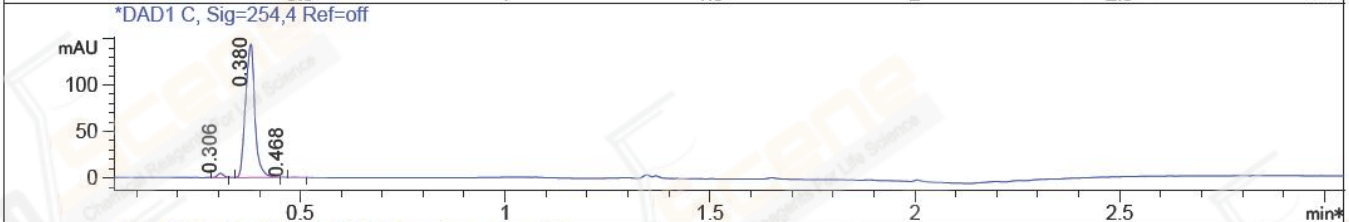
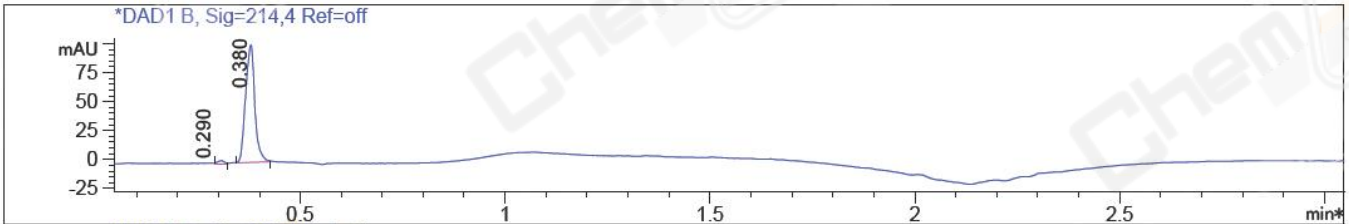


File D:\CHEM32\1\DATA\HEC\NZZ3667-016-1-1.D Tgt Mass (EZX): 247.00
 Injection Date : 22 Sep 16 10:04 am +0800 Seq. Line : 0
 Sample Name : NZZ3667-016-1-1 Location : P1-B-06
 Acq. Operator : KFF (LCMS-02) Inj : 1
 Spec. Reported : MS Integration Inj Volume : 0.1 ul
 Acq. Method : D:\Chem32\1\METHODS\1-POS-3MIN.M
 Analysis Method : D:\CHEM32\1\METHODS\1-POS-3MIN-PROSRSS.M
 Catalog No : CS-0878 Batch#21796 Easy-Access Method: '1-POS-3MIN' 247.00
 Method Info : Mobile Phase: A: water(0.01%TFA) B:ACN(0.01%TFA)
 Gradient: 5% to 95%B within 1.3 min
 Flow Rate :1.8ml/min
 Column :SunFire C18, 4.6*50mm,3.5um A-RP-186
 Oven Temperature : 45C



Integration Results for DAD1 B, Sig=214,4 Ref=off

RetTim	Width	Area	Height	Area%	MS (+)
0.29	0.02	2.68	0.40	1.66	ND
0.38	0.03	159.33	101.33	98.34	248

Integration Results for DAD1 C, Sig=254,4 Ref=off

RetTim	Width	Area	Height	Area%	MS (+)
0.31	0.02	4.61	4.47	1.96	ND
0.38	0.03	229.56	143.77	97.55	248
0.47	0.03	1.16	0.34	0.49	248

Ret. Time: 0.37

<<<< POSITIVE SPECTRA >>>>

