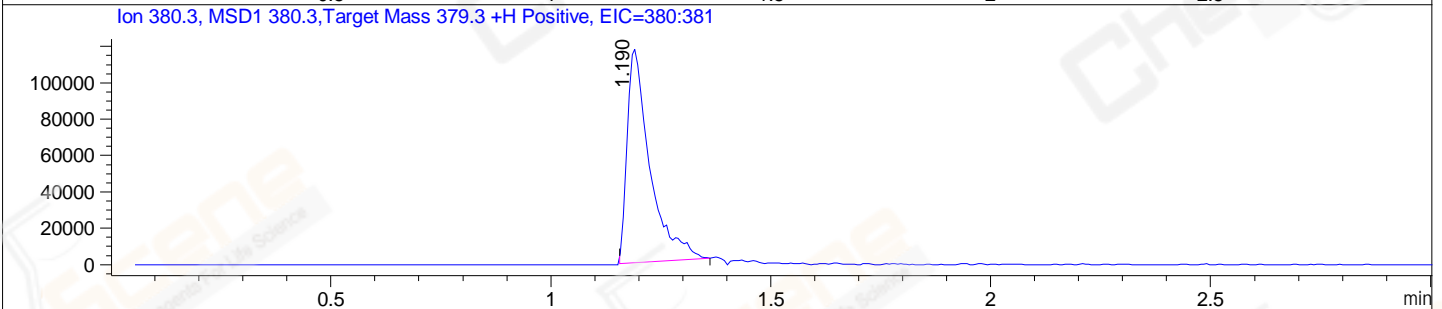
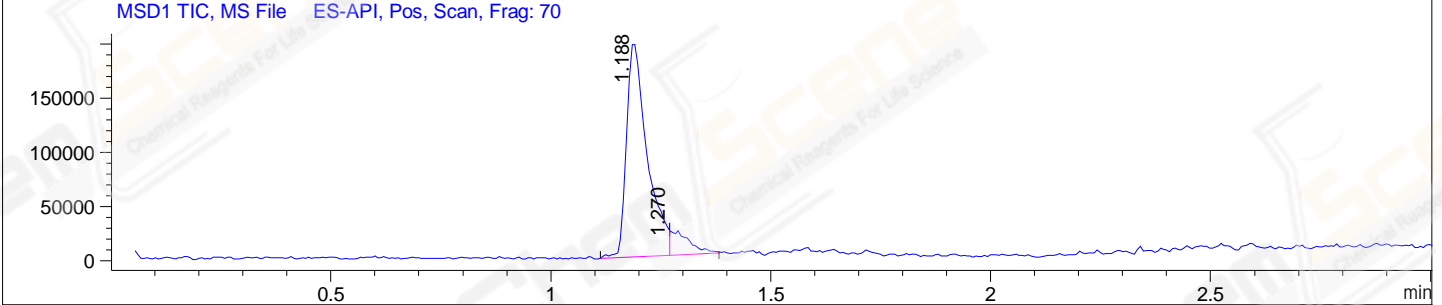
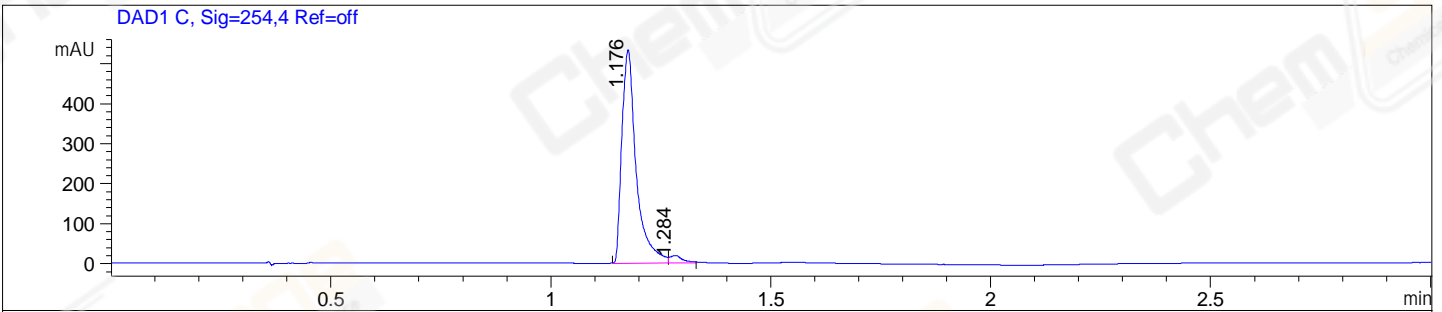


File ..\DATA\2019\20190419\558\CPK2019-418-21827.D Tgt Mass (CHM):
 Injection Date : 19 Apr 19 10:26 am +0800 Seq. Line : 17
 Sample Name : CPK2019-418-21827 Location : P1-D-04
 Acq. Operator : LQ_1052 Inj : 1
 Spec. Reported : MS Integration Inj Volume : 2 ul
 Acq. Method : D:\Chem32\1\data\2019\20190419\558\1-POS-3MIN-1.M
 Analysis Method : D:\CHEM32\1\DATA\2019\20190419\558\1-POS-3MIN-1.M
 Catalog No : CS-5863 Batch#21827
 Method Info : Mobile Phase: A: water(0.01%TFA) B:ACN(0.01%TFA)
 Gradient: 5% to 95%B within 1.3 min
 Flow Rate :1.8ml/min
 Column :SunFire C18, 4.6*50mm,3.5um A-RP-314
 Oven Temperature : 45□



Integration Results for DAD1 C, Sig=254,4 Ref=off

RetTim	Width	Area	Height	Area%	MS (+)
1.18	0.03	1209.96	532.82	97.06	380
1.28	0.03	36.60	18.51	2.94	380

Integration Results for MSD1 TIC, MS File

RetTim	Width	Area	Height	Area%	MS (+)
1.19	0.05	650115.31	199059.52	90.97	380
1.27	0.05	64557.43	22890.37	9.03	380

Ret. Time: 1.19

<<<< POSITIVE SPECTRA >>>>

ES-API Positive



Ret. Time: 1.27

ES-API Positive

