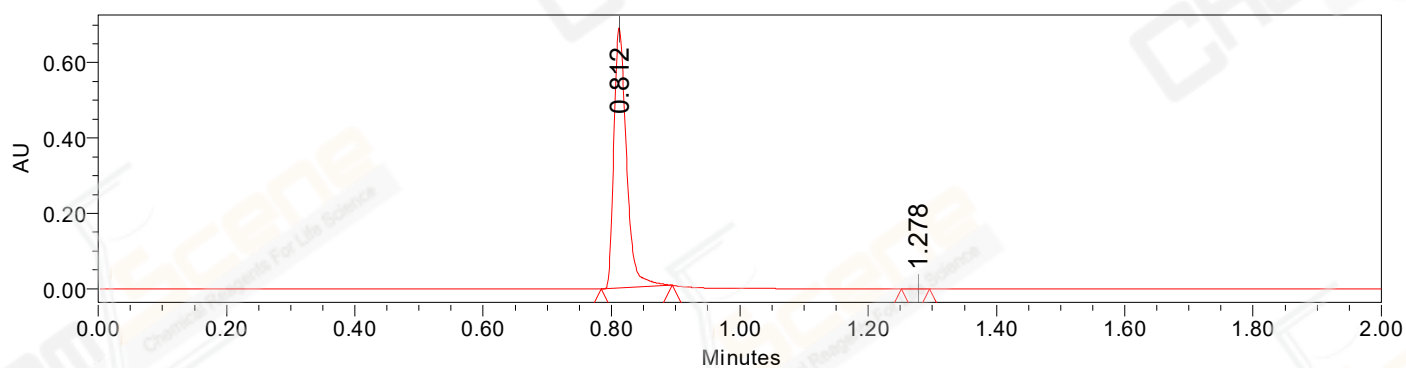


## SAMPLE INFORMATION

CAS NO.: 1883429-22-8  
Sample information:  
Vial: 2:D,1  
Injection #: 1  
Injection Volume: 0.50 ul  
Run Time: 2.8 Minutes  
Sample Set Name: 20220118

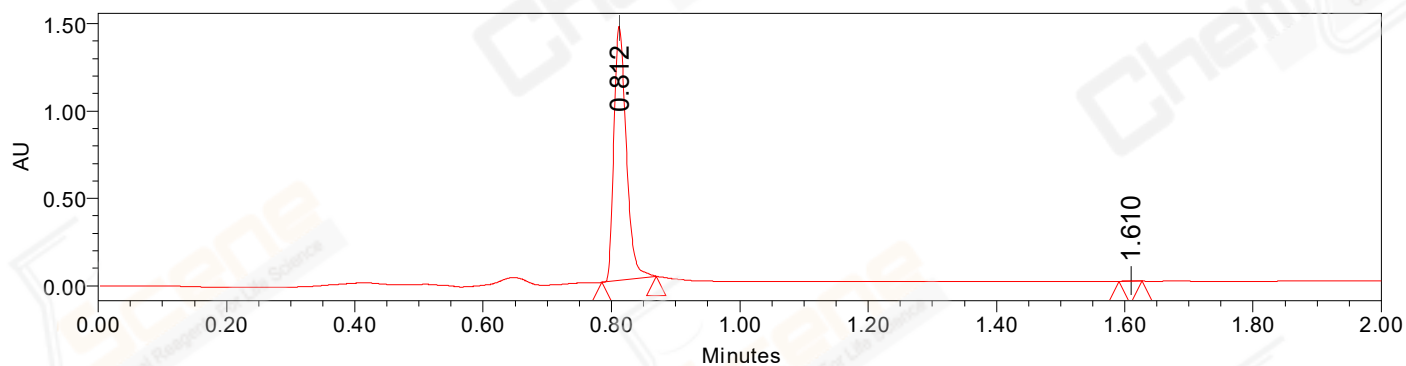
Acquired By: LY  
Date Acquired: 1/18/2022 4:40:04 PM CST  
Acq. Method Set: 1\_POS\_2MIN  
Date Processed: 1/19/2022 4:08:40 PM CST,  
Processing Method: PDA\_01, MS\_scan  
Channel Name: PDA Ch1 214nm@4.8nm, MS TIC,  
Column Name: Poroshell 120 EC-C18 A-RP-929

### Auto-Scaled Chromatogram



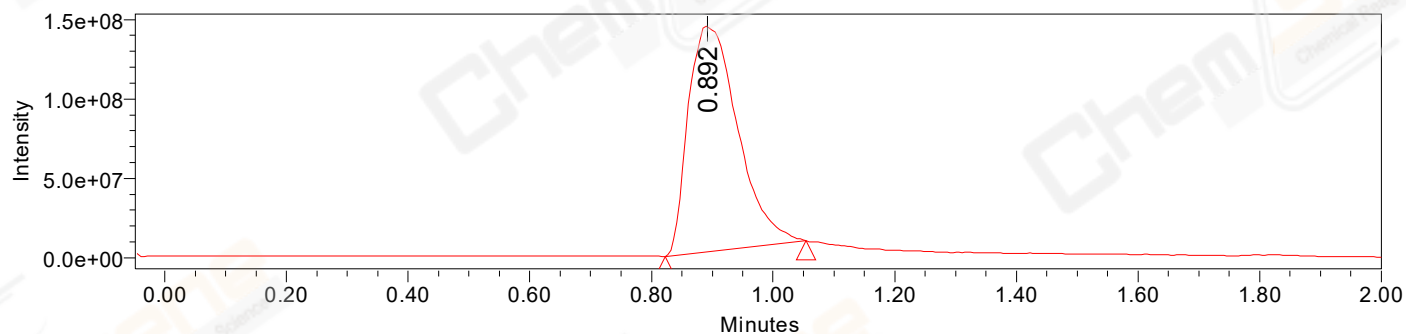
Processed Channel Descr. PDA Ch2 254nm@4.8nm

### Auto-Scaled Chromatogram



Processed Channel Descr. PDA Ch1 214nm@4.8nm

### Auto-Scaled Chromatogram



Processed Channel Descr. ACQ-SQD2 1: MS Scan MS TIC, Smoothed by 9 point Savitzky-Golay Filter., Time offset by -0.053 mins. (1: 150.00-1000.00 ES+, Centroid, CV=30)

Peak Results  
Channel Name: PDA Ch2 254nm@4.8nm

	RT	Width (sec)	Area	Height	% Area	Channel Name
1	0.812	6.650	944310	690285	99.93	PDA Ch2 254nm@4.8nm
2	1.278	2.650	676	491	0.07	PDA Ch2 254nm@4.8nm

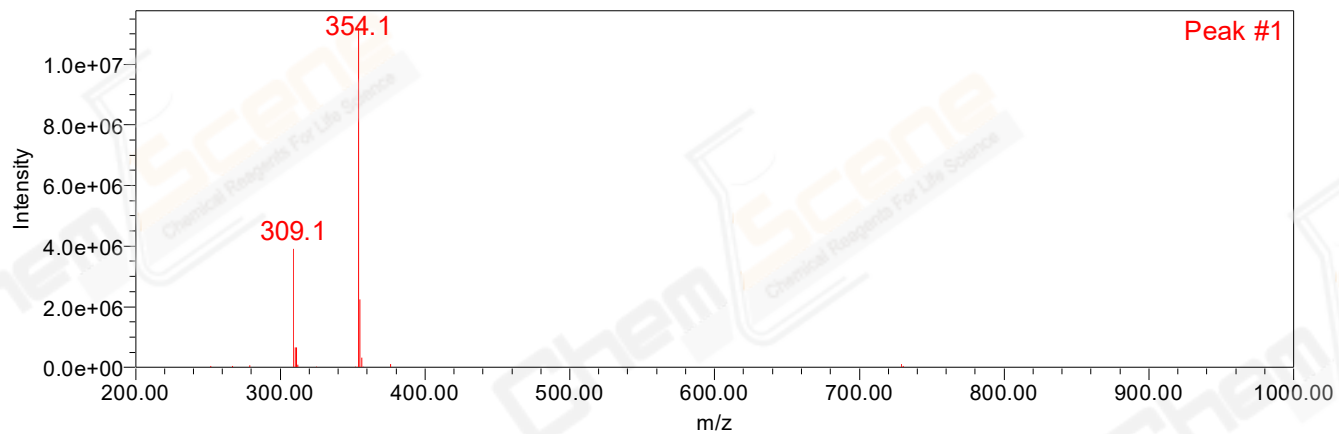
Peak Results  
Channel Name: PDA Ch1 214nm@4.8nm

	RT	Width (sec)	Area	Height	% Area	Channel Name
1	0.812	5.100	1949134	1455349	99.86	PDA Ch1 214nm@4.8nm
2	1.610	2.150	2821	2581	0.14	PDA Ch1 214nm@4.8nm

Peak Results  
Channel Name: MS TIC

	RT	Width (sec)	Area	Height	% Area	Channel Name
1	0.892	13.927	803254159	142236560	100.00	MS TIC

### Match Plot



Retention Time 0.892 Channel Name MS TIC