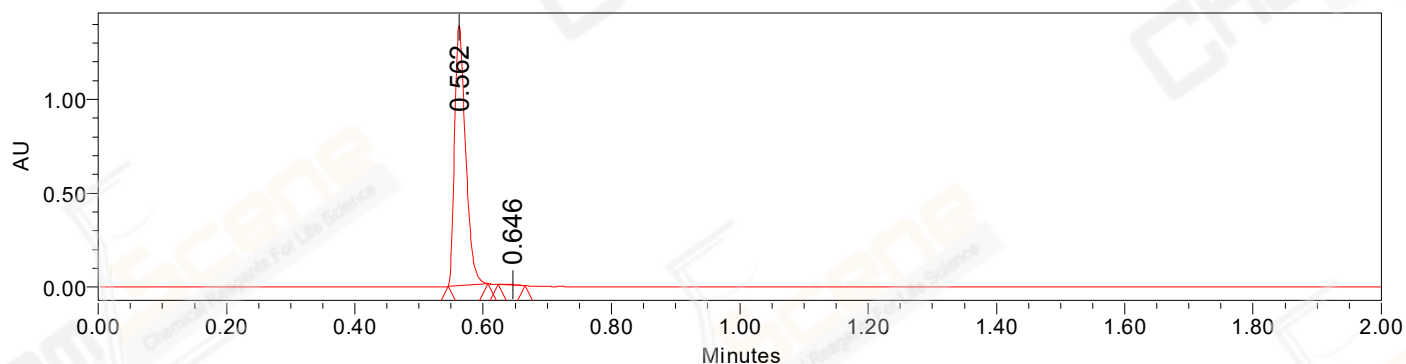


SAMPLE INFORMATION

CAS NO.: 1883429-21-7
Sample information:
Vial: 1:C,2
Injection #: 1
Injection Volume: 0.50 ul
Run Time: 2.8 Minutes
Sample Set Name: 20220424

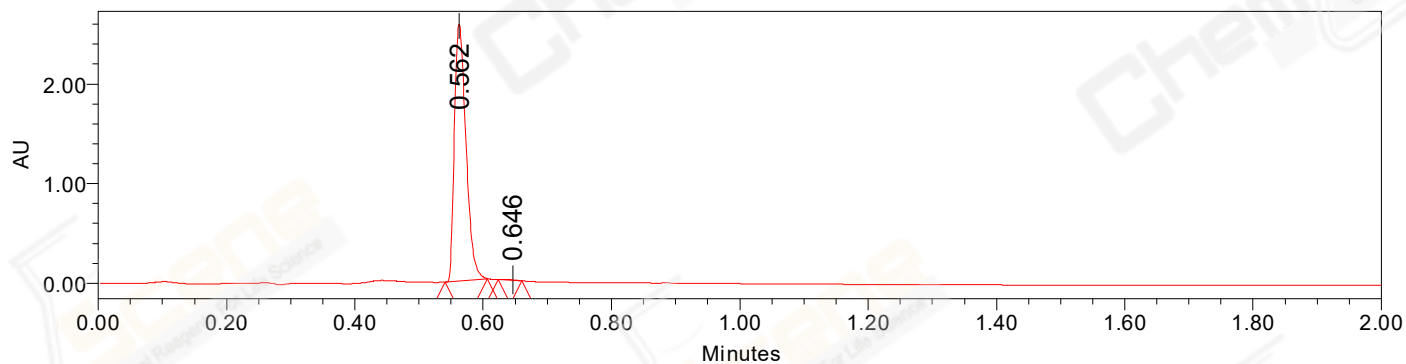
Acquired By: LY
Date Acquired: 4/24/2022 2:11:50 PM CST
Acq. Method Set: 1_POS_2MIN
Date Processed: 4/24/2022 5:28:04 PM CST,
Processing Method: PDA_01, MS_scan
Channel Name: PDA Ch1 214nm@4.8nm, MS TIC,
Column Name: A-RP-929

Auto-Scaled Chromatogram



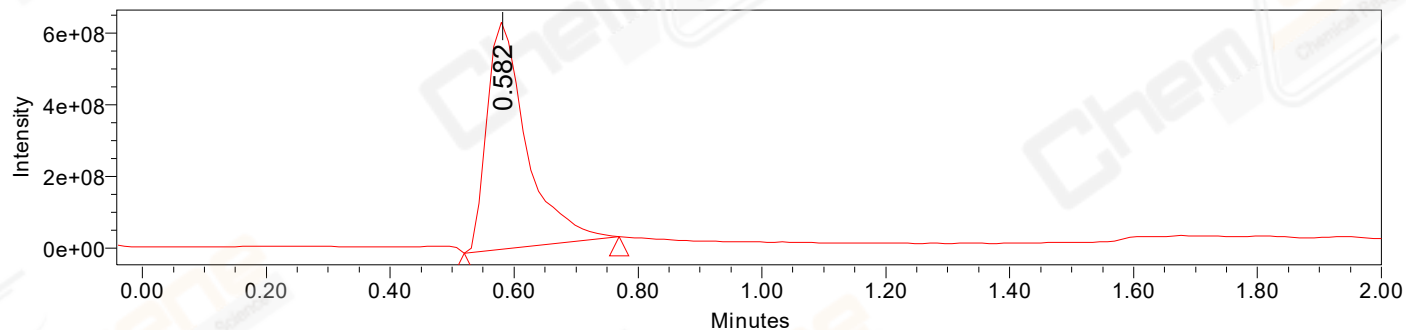
Processed Channel Descr. PDA Ch2 254nm@4.8nm

Auto-Scaled Chromatogram



Processed Channel Descr. PDA Ch1 214nm@4.8nm

Auto-Scaled Chromatogram



Processed Channel Descr. ACQ-SQD2 1: MS Scan MS TIC, Smoothed by 9 point Savitzky-Golay Filter.,
Time offset by -0.053 mins. (1: 150.00-1000.00 ES+, Centroid, CV=30)

Peak Results
Channel Name: PDA Ch2 254nm@4.8nm

	RT	Width (sec)	Area	Height	% Area	Base Peak (Combined) (m/z)	Channel Name
1	0.562	3.750	1643190	1382439	99.79	151.98	PDA Ch2 254nm@4.8nm
2	0.646	2.500	3425	2350	0.21	177.76	PDA Ch2 254nm@4.8nm

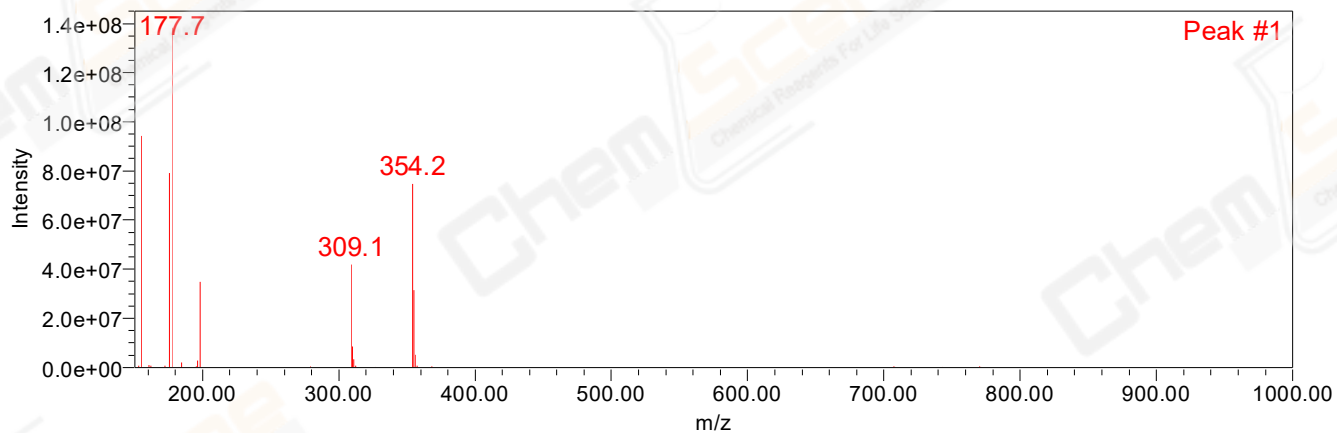
Peak Results
Channel Name: PDA Ch1 214nm@4.8nm

	RT	Width (sec)	Area	Height	% Area	Base Peak (Combined) (m/z)	Channel Name
1	0.562	3.950	3225205	2576988	99.83	152.03	PDA Ch1 214nm@4.8nm
2	0.646	2.200	5578	4009	0.17	177.76	PDA Ch1 214nm@4.8nm

Peak Results
Channel Name: MS TIC

	RT	Width (sec)	Area	Height	% Area	Base Peak (Combined) (m/z)	Channel Name
1	0.582	15.033	2809590493	631435361	100.00	177.70	MS TIC

Match Plot



Retention Time 0.582 Channel Name MS TIC