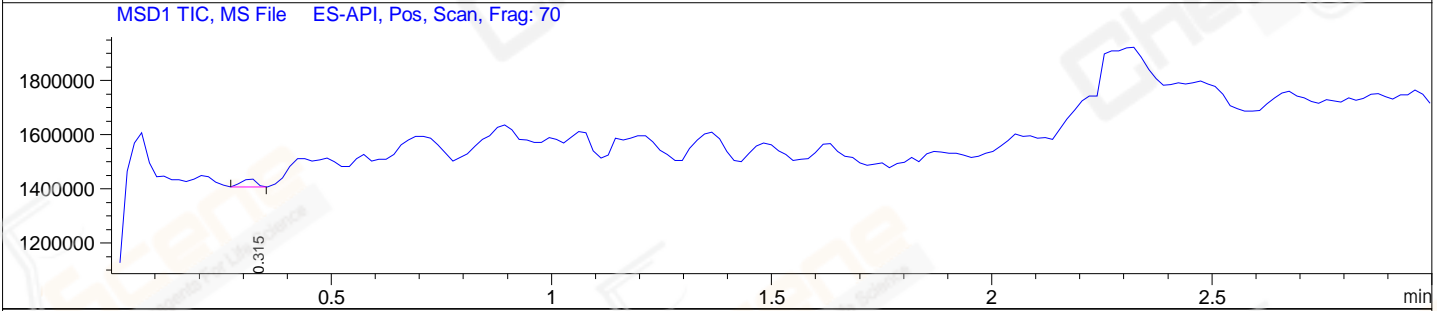
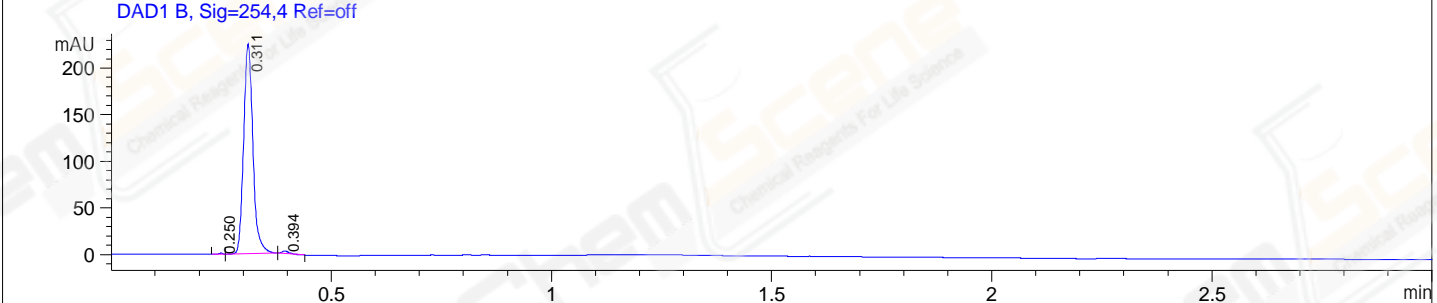
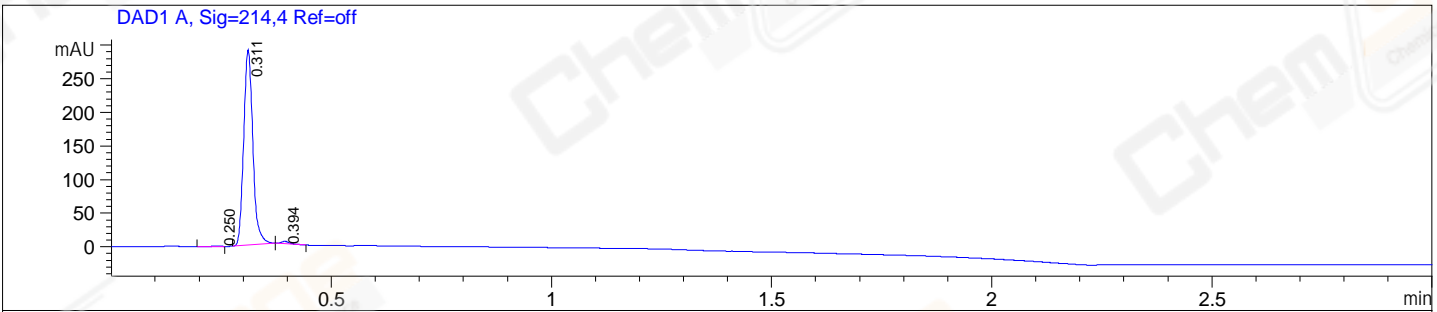


File F:\data\2023\2023-05\2023-05-25\CPK2023-525-22009-UPLC-MS-05-007853.D

Injection Date : 25-May-23, 12:53:43 Tgt Mass(EZX) :
 Sample Name : CPK2023-525-22009 Location : P1-F-07
 Acq. Operator : LY_2278 Inj : 1
 Spec. Reported : MS Integration Inj Volume : 0.2 ul
 Acq. Method : D:\methods\1-POS-UPLC3.0MIN(1.2)(0-2000)-0%.M
 Analysis Method : D:\METHODS\1-POS-UPLC3.0MIN(1.2)(0-2000)-0%.M
 CAS NO. : 51-21-8 WalkUp method: '1-POS-3MIN(0-2000)-0%' Project: CPK2023
 Method Info : Mobile Phase: A: water(0.01%TFA) B:ACN(0.01%TFA)
 Gradient:0% to 95%B within 2.0 min
 Flow Rate :1.2ml/min
 Column :Shim-pack Scepter C18-120, 3.0*33mm,3um
 Oven Temperature : 45C



Integration Results for DAD1 A, Sig=214,4 Ref=off

RetTim	Width	Area	Height	Area%
0.25	0.02	1.03	0.85	0.24
0.31	0.02	421.52	289.93	98.78
0.39	0.02	4.19	3.46	0.98

Integration Results for DAD1 B, Sig=254,4 Ref=off

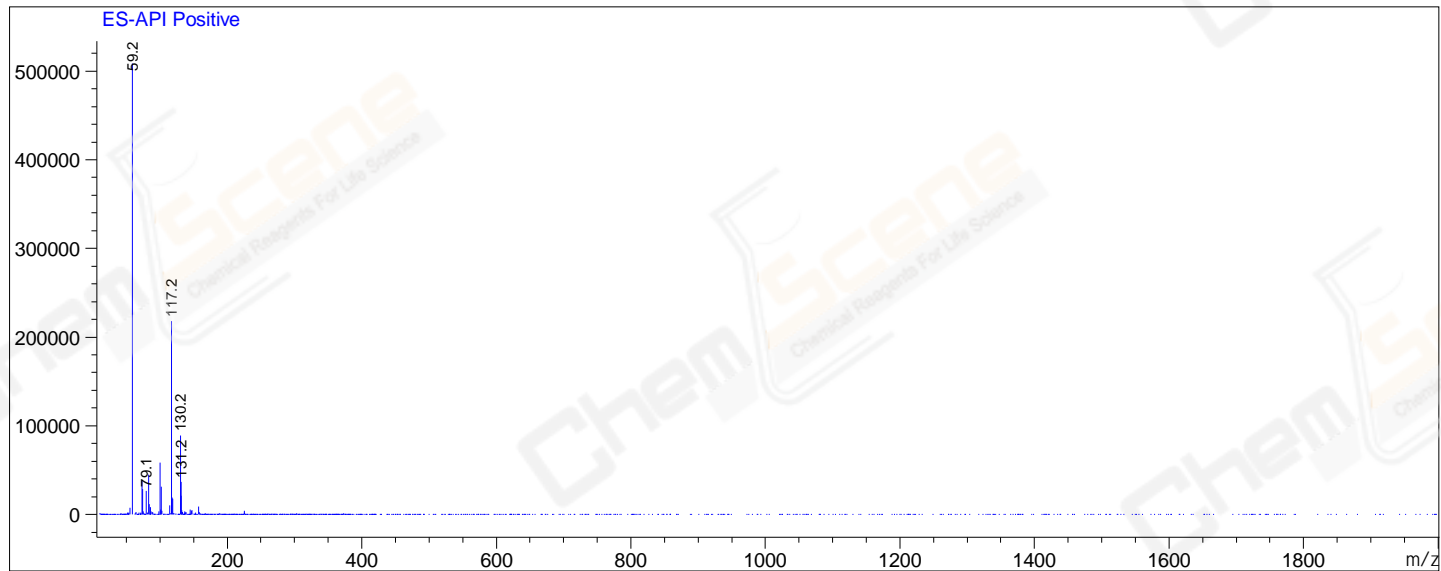
RetTim	Width	Area	Height	Area%
0.25	0.01	0.75	1.27	0.23
0.31	0.02	331.09	224.74	98.82
0.39	0.02	3.20	2.96	0.95

Integration Results for MSD1 TIC, MS File

RetTim	Width	Area	Height	Area%
0.31	0.04	72608.75	31302.56	100.00

Ret. Time: 0.31

<<<< POSITIVE SPECTRA >>>>



*** End of Report ***