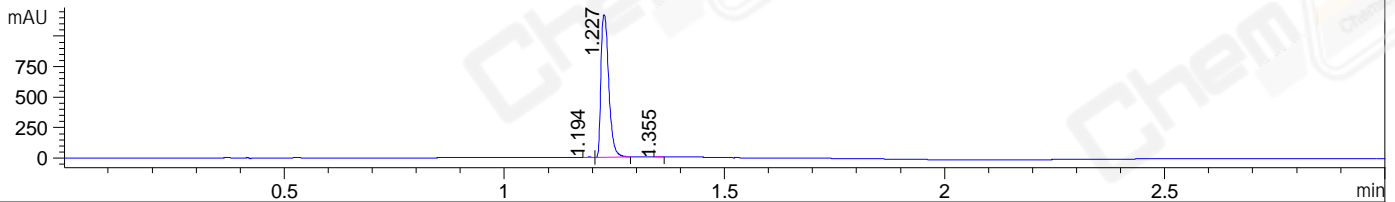
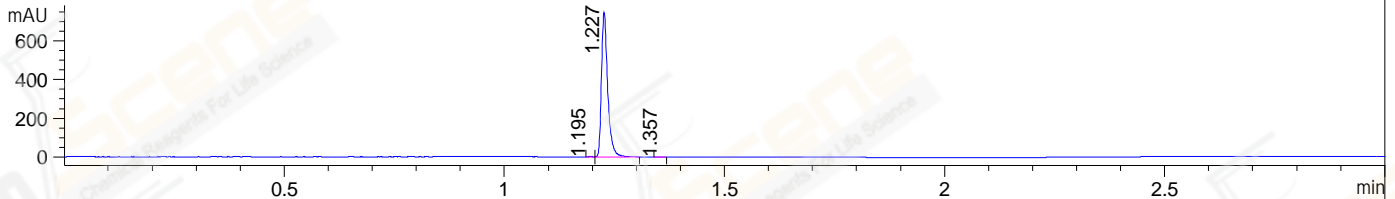


File ..\DATA\2019\20190720\650\CPK2019-717-22066.D Tgt Mass (CHM):
 Injection Date : 20 Jul 19 1:31 pm +0800 Seq. Line : 61
 Sample Name : CPK2019-717-22066 Location : P1-E-08
 Acq. Operator : ZJ_1432 Inj : 1
 Spec. Reported : MS Integration Inj Volume : 1 ul
 Acq. Method : D:\Chem32\1\data\2019\20190720\650\1-POS-3MIN.M
 Analysis Method : D:\CHEM32\1\DATA\2019\20190720\650\1-POS-3MIN.M
 CAS NO. : 1075237-97-6
 Method Info : Mobile Phase: A: water(0.01%TFA) B:ACN(0.01%TFA)
 Gradient: 5% to 95%B within 1.3 min
 Flow Rate :1.8ml/min
 Column :SunFire C18, 4.6*50mm,3.5um A-RP-433
 Oven Temperature : 45□

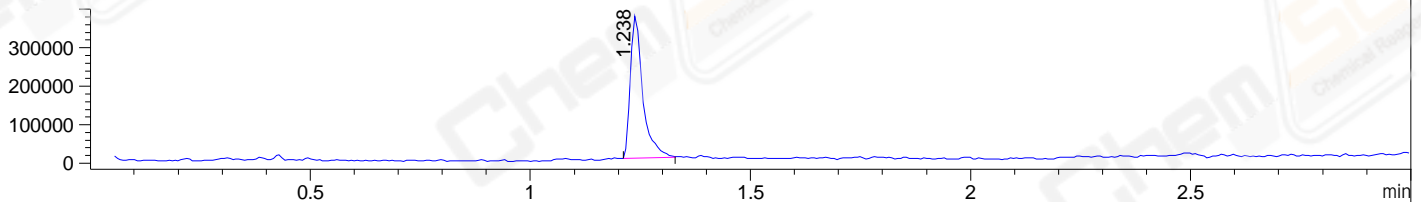
DAD1 B, Sig=214,4 Ref=off



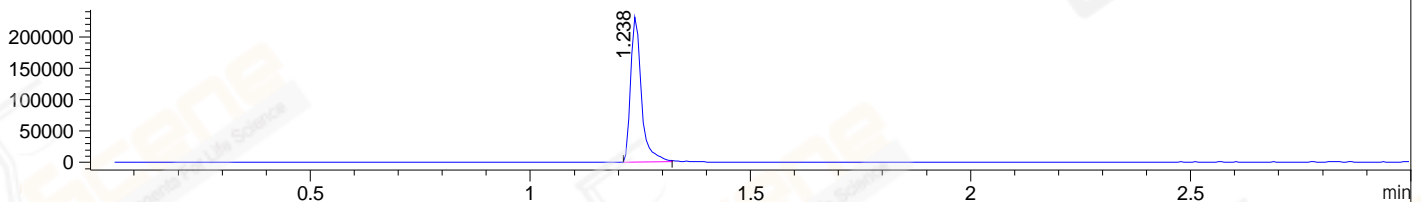
DAD1 C, Sig=254,4 Ref=off



MSD1 TIC, MS File ES-API, Pos, Scan, Frag: 70



Ion 252.244, MSD1 252.244, Target Mass 251.244 +H Positive, EIC=251.94:252.94



Integration Results for DAD1 B, Sig=214,4 Ref=off

RetTim	Width	Area	Height	Area%	MS (+)
1.19	0.01	2.85	3.94	0.20	ND
1.23	0.02	1442.25	1171.86	99.69	252
1.36	0.01	1.70	2.10	0.12	252

Integration Results for DAD1 C, Sig=254,4 Ref=off

RetTim	Width	Area	Height	Area%	MS (+)
1.20	0.01	0.52	0.65	0.07	254
1.23	0.02	729.54	748.80	99.87	252
1.36	0.02	0.44	0.48	0.06	252

Integration Results for MSD1 TIC, MS File

RetTim	Width	Area	Height	Area%	MS (+)
1.24	0.03	720666.44	371190.19	100.00	252

Ret. Time: 1.24

<<<< POSITIVE SPECTRA >>>>

ES-API Positive

