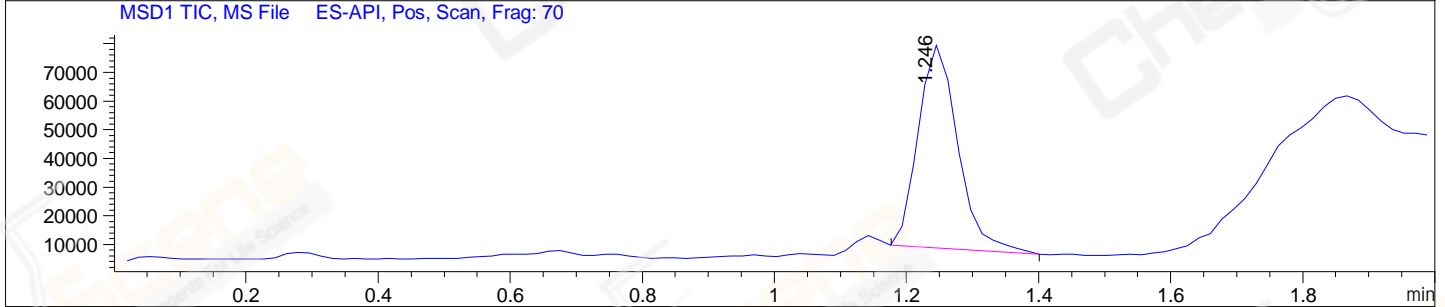
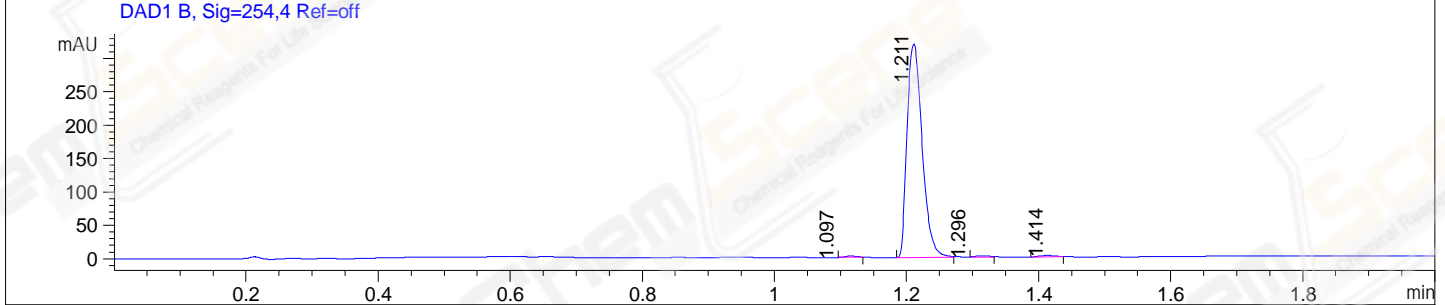
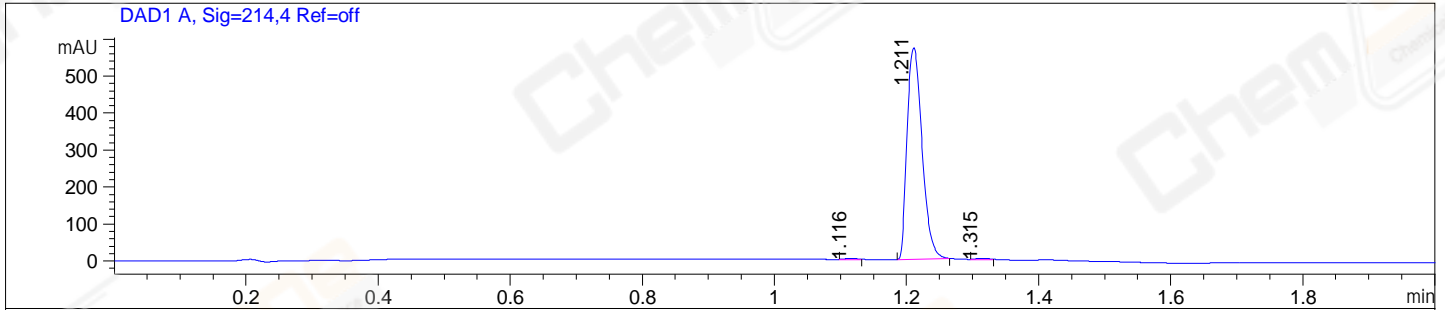


File ..09-19\CPK2022-916-UPLC-MS-04-602224.D Tgt Mass (EZ):

Injection Date : 19-Sep-22, 18:33:09 Seq. Line : 0
 Sample Name : CPK2022-916 Location : P2-F-11
 Acq. Operator : LY_2278 Inj : 1
 Spec. Reported : MS Integration Inj Volume : 0.5 ul
 Acq. Method : E:\Chem32\1-Methods\1-POS-UPLC2.0MIN(0.8)(150-1000).M
 Analysis Method : E:\CHEM32\1\METHODS\1-POS-UPLC2.0MIN(0.8)(150-1000).M
 CAS NO. : 932749-62-7 WalkUp method: '1-POS-2MIN' Project: BIZ2022
 Method Info : Mobile Phase: A: water(0.01%TFA) B:ACN(0.01%TFA)
 Gradient: 5% to 95%B within 1.3 min
 Flow Rate : 0.8ml/min
 Column :Poroshell 120 EC- C18, 2.1*50mm,1.9um
 Oven Temperature : 45C



Integration Results for DAD1 A, Sig=214,4 Ref=off

RetTim	Width	Area	Height	Area%	MS (+)
1.12	0.02	3.74	2.75	0.41	465
1.21	0.03	903.85	572.16	99.01	ND
1.31	0.02	5.25	3.60	0.58	ND

Integration Results for DAD1 B, Sig=254,4 Ref=off

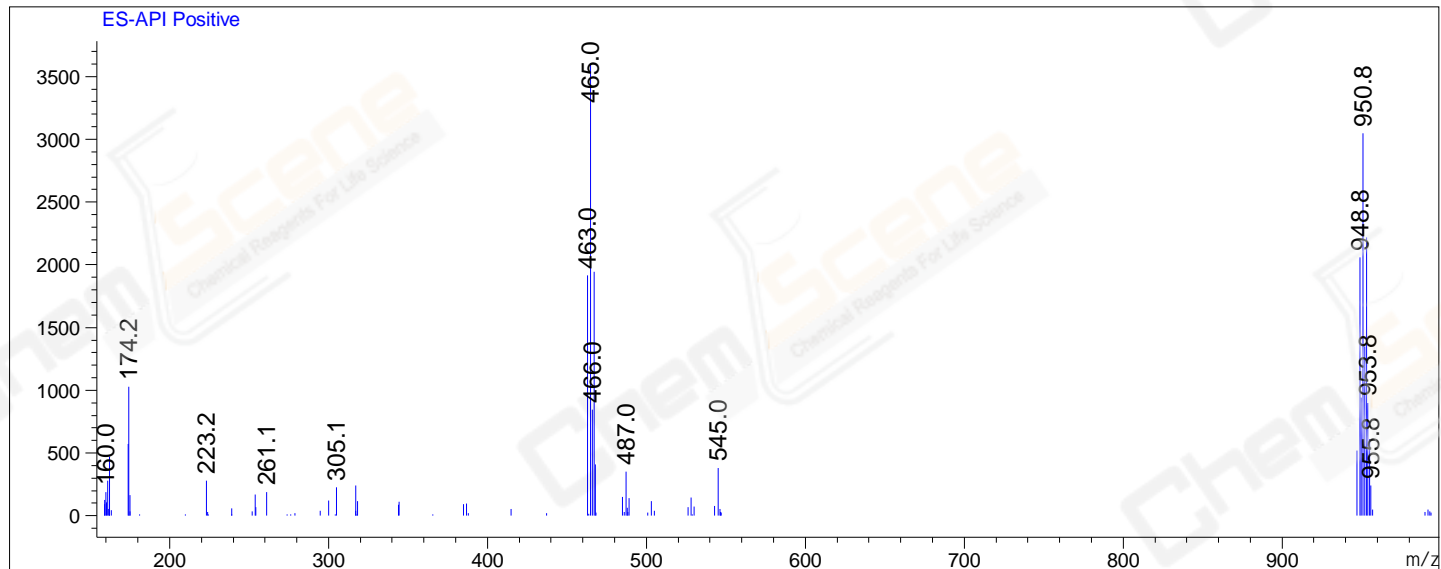
RetTim	Width	Area	Height	Area%	MS (+)
1.10	0.02	1.92	-0.10	0.37	465
1.21	0.03	506.51	319.42	98.31	ND
1.30	0.03	3.11	0.55	0.60	ND
1.41	0.03	3.65	2.10	0.71	ND

Integration Results for MSD1 TIC, MS File

RetTim	Width	Area	Height	Area%	MS (+)
1.25	0.06	294435.50	70641.30	100.00	465

Ret. Time: 1.25

<<<< POSITIVE SPECTRA >>>>



*** End of Report ***