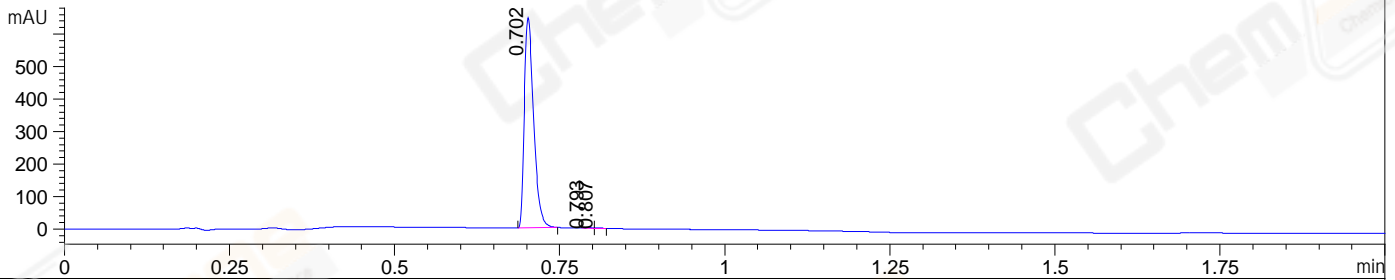
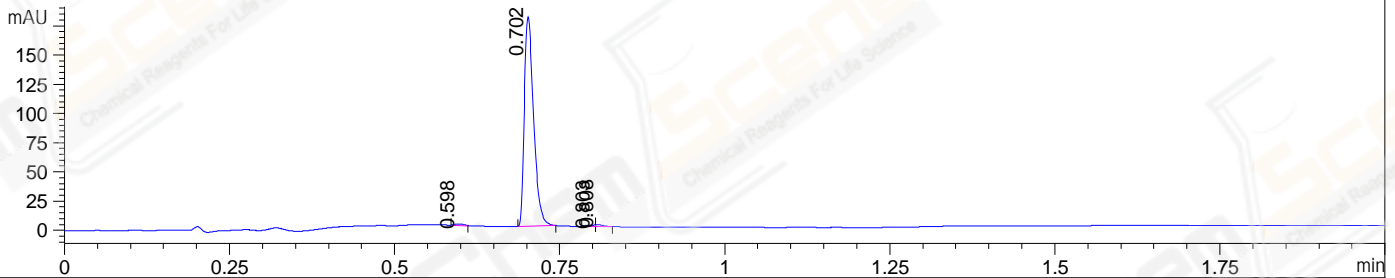


File ..22-08-25\ZBK14691-003-1-UPLC-MS-05-005992.D Tgt Mass (EZX):
 Injection Date : 25-Aug-22, 19:21:22 Seq. Line : 0
 Sample Name : ZBK14691-003-1 Location : P1-A-10
 Acq. Operator : LY_2287 Inj : 1
 Spec. Reported : MS Integration Inj Volume : 0.2 ul
 Acq. Method : D:\methods\1-POS-UPLC2.0MIN-(0.8) (150-1000).M
 Analysis Method : D:\METHODS\1-POS-UPLC2.0MIN-(0.8) (150-1000).M
 CAS NO. : 2748220-93-9 WalkUp method: '1-POS-2MIN' Project: LD1430
 Method Info : Mobile Phase: A: water(0.01%TFA) B:ACN(0.01%TFA)
 Gradient: 5% to 95%B within 1.3 min
 Flow Rate : 0.8ml/min
 Column : Poroshell 120 EC- C18, 2.1*50mm,1.9um A-RP-750
 Oven Temperature : 45C

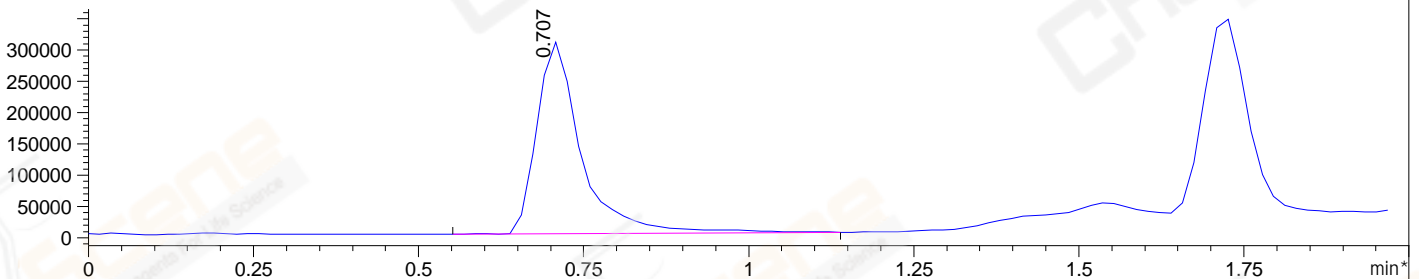
DAD1 A, Sig=214,4 Ref=off



DAD1 B, Sig=254,4 Ref=off



*MSD1 TIC, MS File ES-API, Pos, Scan, Frag: 70



Integration Results for DAD1 A, Sig=214,4 Ref=off

RetTim	Width	Area	Height	Area%	MS (+)
0.70	0.02	638.96	647.93	99.44	516
0.79	0.01	2.23	2.63	0.35	516
0.81	0.01	1.39	1.92	0.22	516

Integration Results for DAD1 B, Sig=254,4 Ref=off

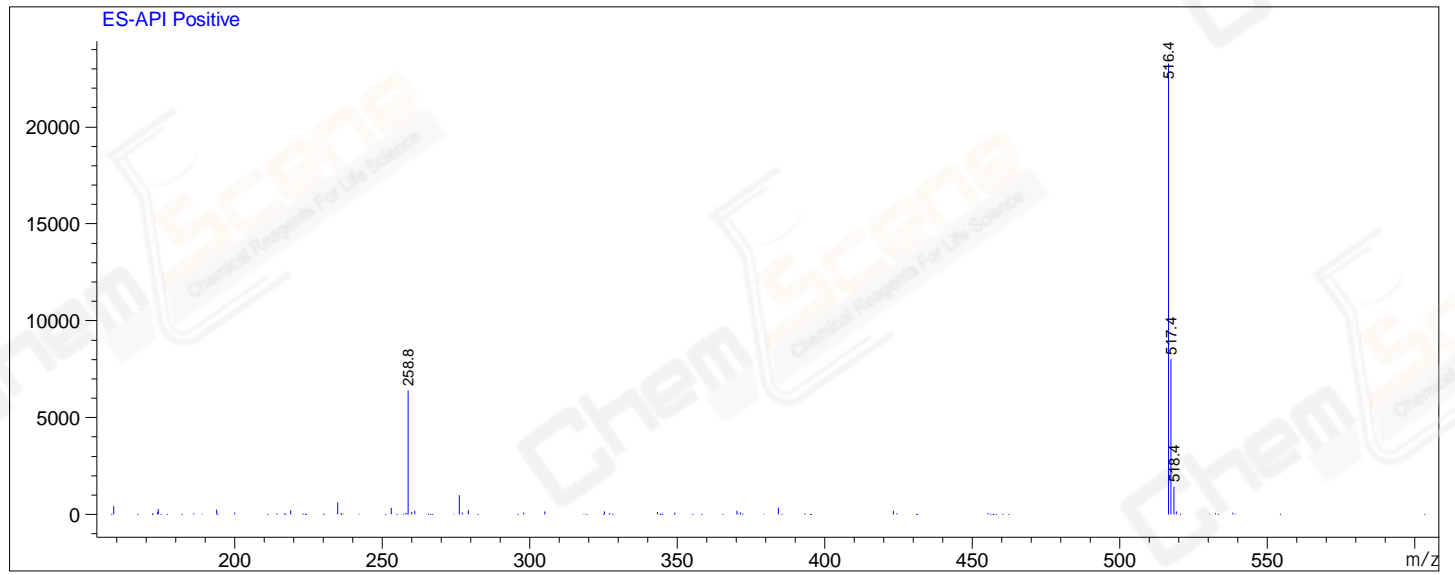
RetTim	Width	Area	Height	Area%	MS (+)
0.60	0.02	1.16	1.21	0.64	ND
0.70	0.02	176.36	179.22	98.00	516
0.80	0.01	1.18	1.36	0.66	516
0.81	0.01	1.26	1.58	0.70	516

Integration Results for MSD1 TIC, MS File

RetTim	Width	Area	Height	Area%	MS (+)
0.71	0.07	1449027.25	306112.47	100.00	516

Ret. Time: 0.71

<<<< POSITIVE SPECTRA >>>>



*** End of Report ***