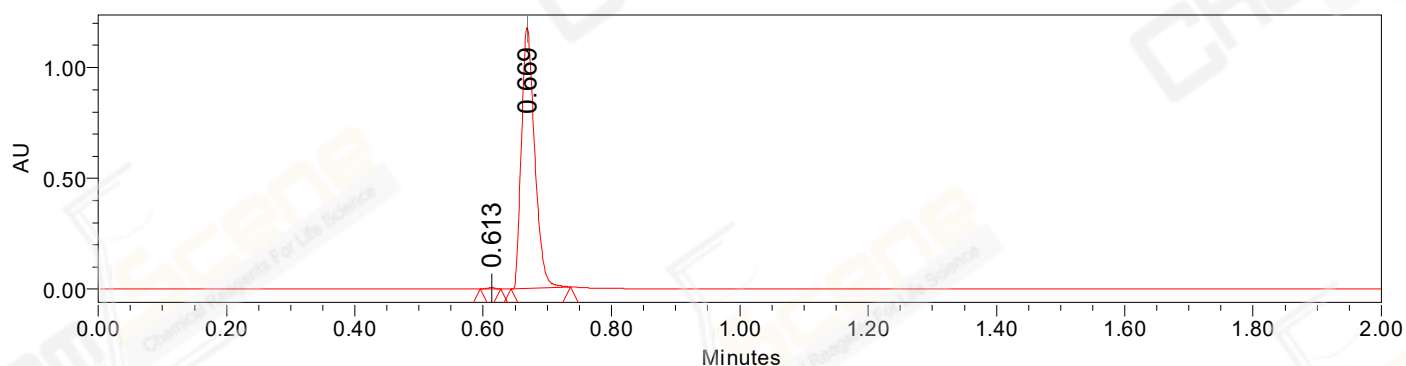


## SAMPLE INFORMATION

CAS NO.: 911222-45-2  
Sample information:  
Vial: 2:F,4  
Injection #: 1  
Injection Volume: 0.50 ul  
Run Time: 2.8 Minutes  
Sample Set Name: 20220520

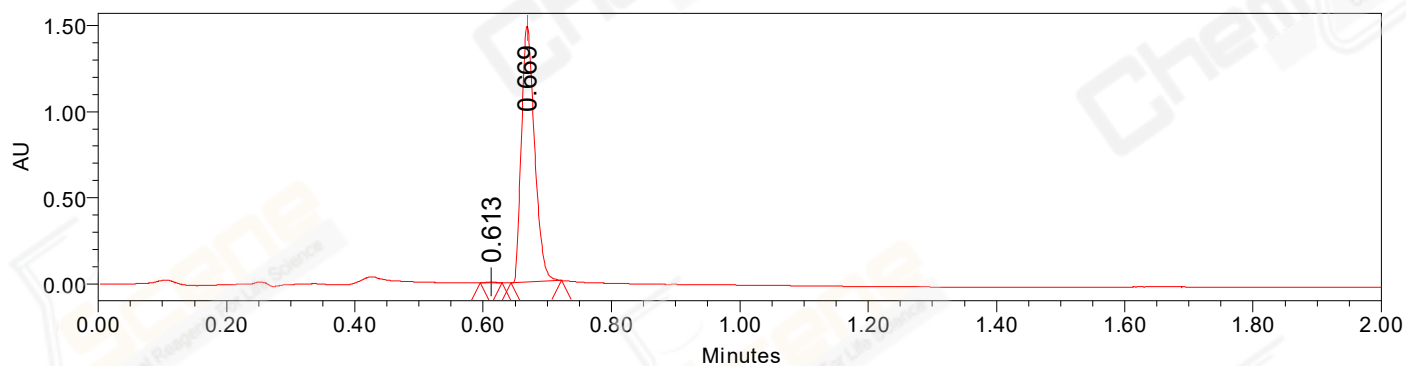
Acquired By: LY  
Date Acquired: 5/20/2022 6:52:09 PM CST  
Acq. Method Set: 1\_POS\_2MIN  
Date Processed: 5/21/2022 11:02:55 AM CST,  
Processing Method: PDA\_01, MS\_scan  
Channel Name: PDA Ch1 214nm@4.8nm, MS TIC,  
Column Name: A-RP-985

### Auto-Scaled Chromatogram



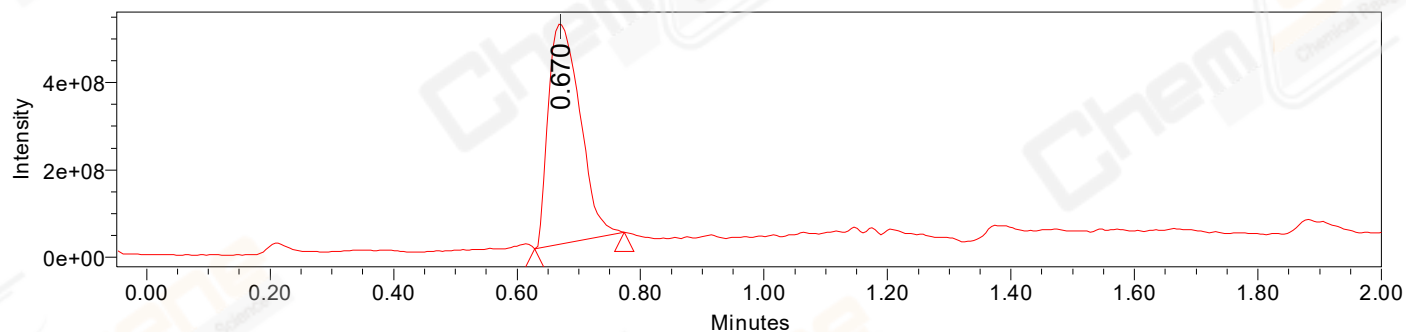
Processed Channel Descr. PDA Ch2 254nm@4.8nm

### Auto-Scaled Chromatogram



Processed Channel Descr. PDA Ch1 214nm@4.8nm

### Auto-Scaled Chromatogram



Processed Channel Descr. ACQ-SQD2 1: MS Scan MS TIC, Smoothed by 9 point Savitzky-Golay Filter., Time offset by -0.053 mins. (1: 150.00-1000.00 ES+, Centroid, CV=30)

Peak Results  
Channel Name: PDA Ch2 254nm@4.8nm

	RT	Width (sec)	Area	Height	% Area	Base Peak (Combined) (m/z)	Channel Name
1	0.613	1.950	5982	6199	0.35	151.89	PDA Ch2 254nm@4.8nm
2	0.669	5.550	1680976	1176111	99.65	358.13	PDA Ch2 254nm@4.8nm

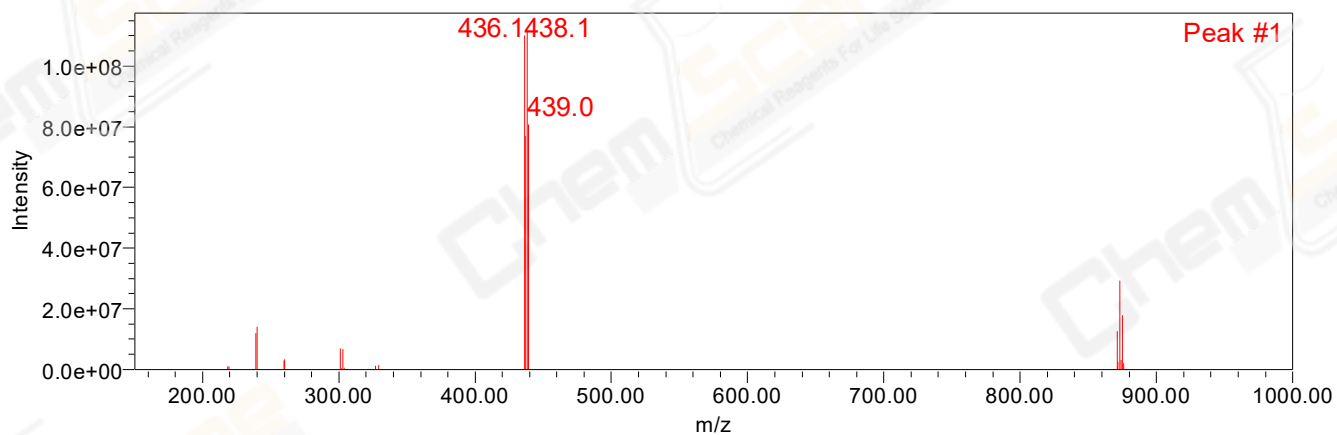
Peak Results  
Channel Name: PDA Ch1 214nm@4.8nm

	RT	Width (sec)	Area	Height	% Area	Base Peak (Combined) (m/z)	Channel Name
1	0.613	2.050	5726	5832	0.27	151.91	PDA Ch1 214nm@4.8nm
2	0.669	4.750	2114995	1486236	99.73	358.13	PDA Ch1 214nm@4.8nm

Peak Results  
Channel Name: MS TIC

	RT	Width (sec)	Area	Height	% Area	Base Peak (Combined) (m/z)	Channel Name
1	0.670	8.705	1795272405	506755321	100.00	438.11	MS TIC

Match Plot



Retention Time 0.670 Channel Name MS TIC