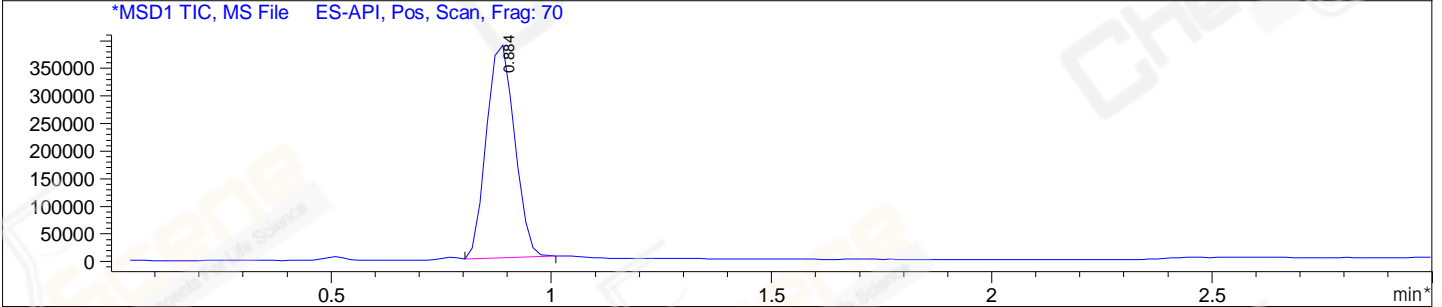
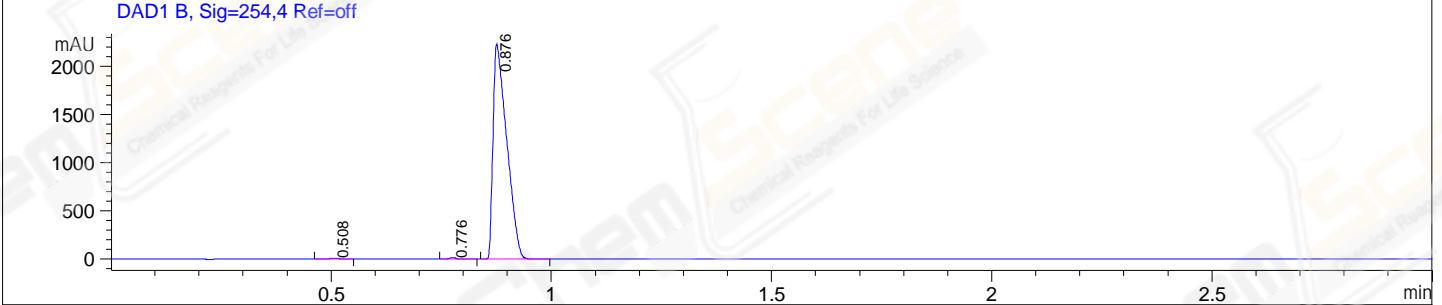
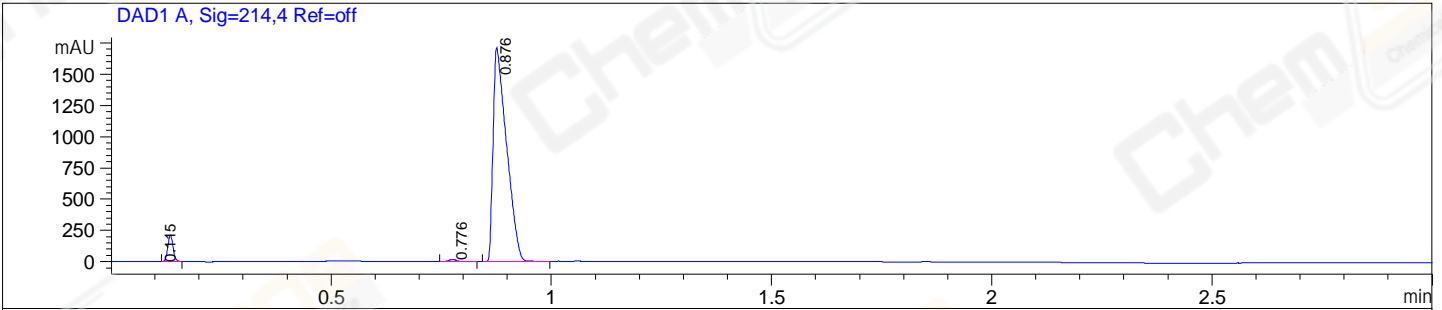


File E:\ChemStation\1\DATA\2023\2023-07\2023-07-24\CPK2023-724-228470-UPLC-MS-10-008779.D  
 Injection Date : 24-Jul-23, 15:55:25 Tgt Mass(EZX) :  
 Sample Name : CPK2023-724-228470 Location : P1-E-10  
 Acq. Operator : LY\_2278 Inj : 1  
 Spec. Reported : MS Integration Inj Volume : 1 ul  
 Acq. Method : E:\ChemStation\1\Methods\1-POS-UPLC3.0MIN(1.2)(150-1000).M  
 Analysis Method : E:\CHEMSTATION\1\METHODS\1-POS-UPLC3.0MIN(1.2)(150-1000).M  
 CAS NO. : 162558-52-3 WalkUp method: '1-POS-3MIN' Project: CPK2023  
 Method Info : Mobile Phase: A: water(0.01%TFA) B:ACN(0.01%TFA)  
 Gradient: 5% to 95%B within 2.0 min  
 Flow Rate :1.2ml/min  
 Column :Shim-pack Scepter C18-120, 3.0\*33mm,3um  
 Oven Temperature : 45C



Integration Results for DAD1 A, Sig=214,4 Ref=off

RetTim	Width	Area	Height	Area%
0.12	0.01	177.24	-0.01	4.65
0.78	0.02	16.64	15.56	0.44
0.88	0.03	3621.11	1706.77	94.92

Integration Results for DAD1 B, Sig=254,4 Ref=off

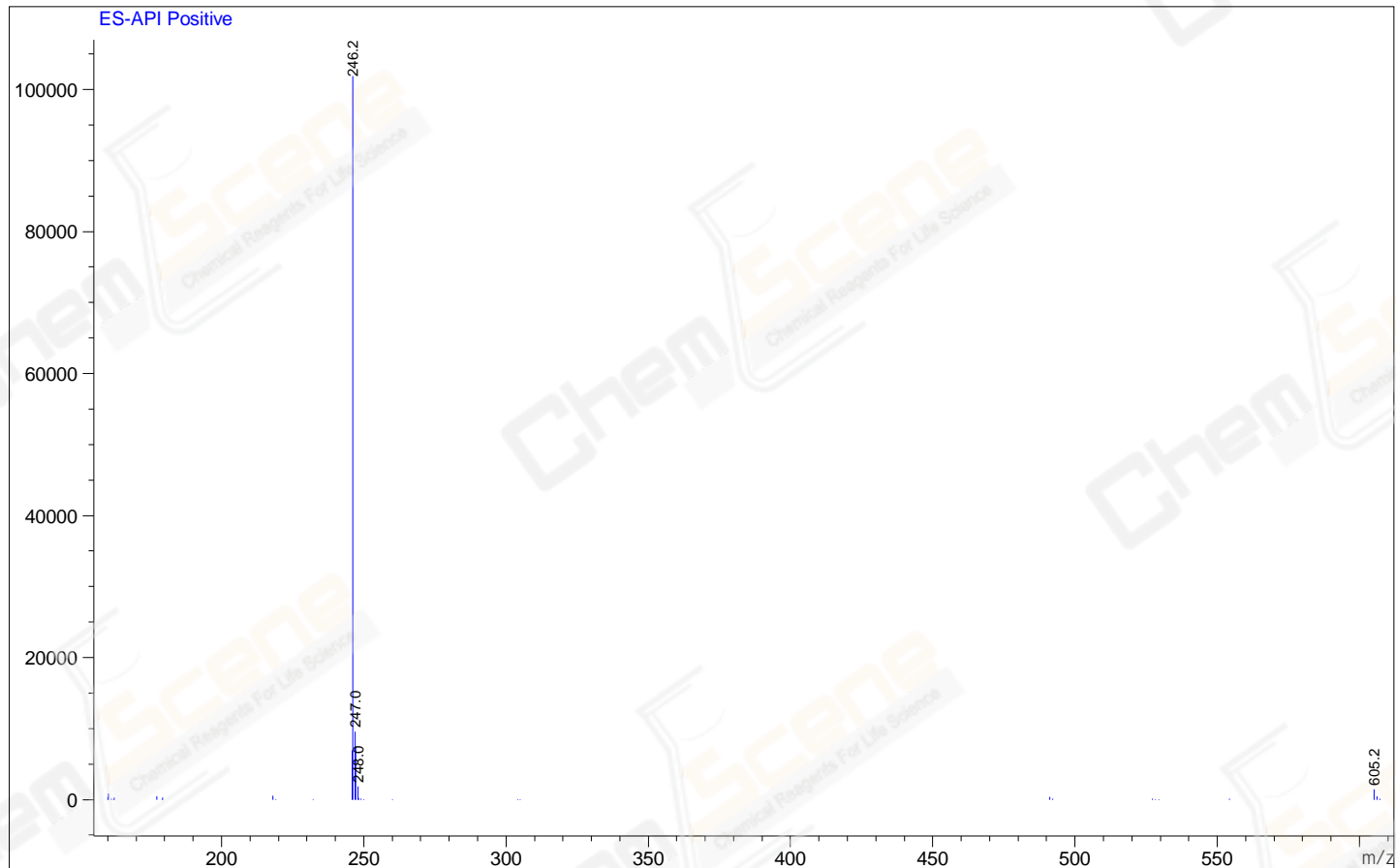
RetTim	Width	Area	Height	Area%
0.51	0.03	13.64	6.94	0.28
0.78	0.02	15.72	14.53	0.33
0.88	0.03	4807.47	2224.18	99.39

Integration Results for MSD1 TIC, MS File

RetTim	Width	Area	Height	Area%
0.88	0.07	1712460.75	395517.00	100.00

Ret. Time: 0.88

<<<< POSITIVE SPECTRA >>>>



\*\*\* End of Report \*\*\*