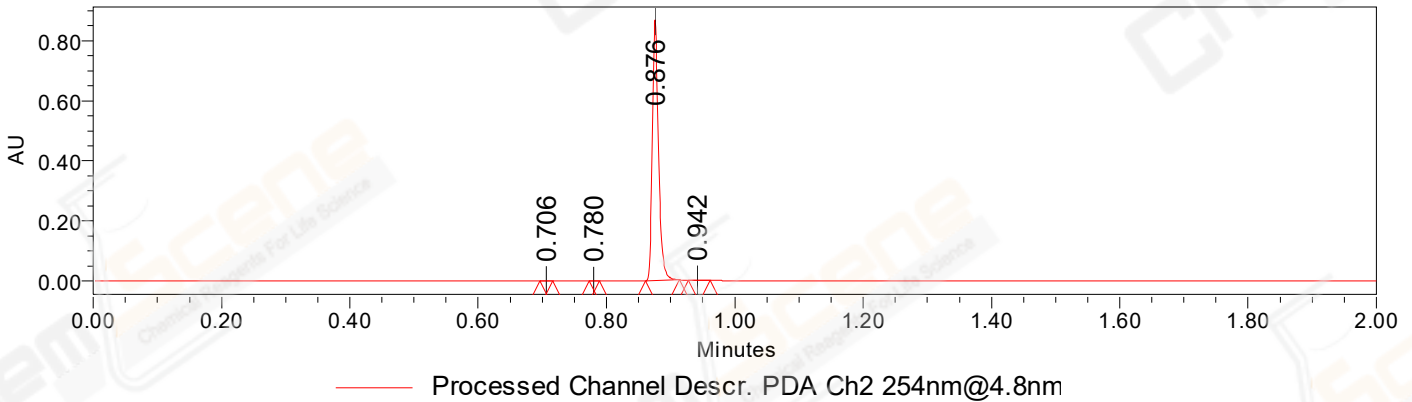


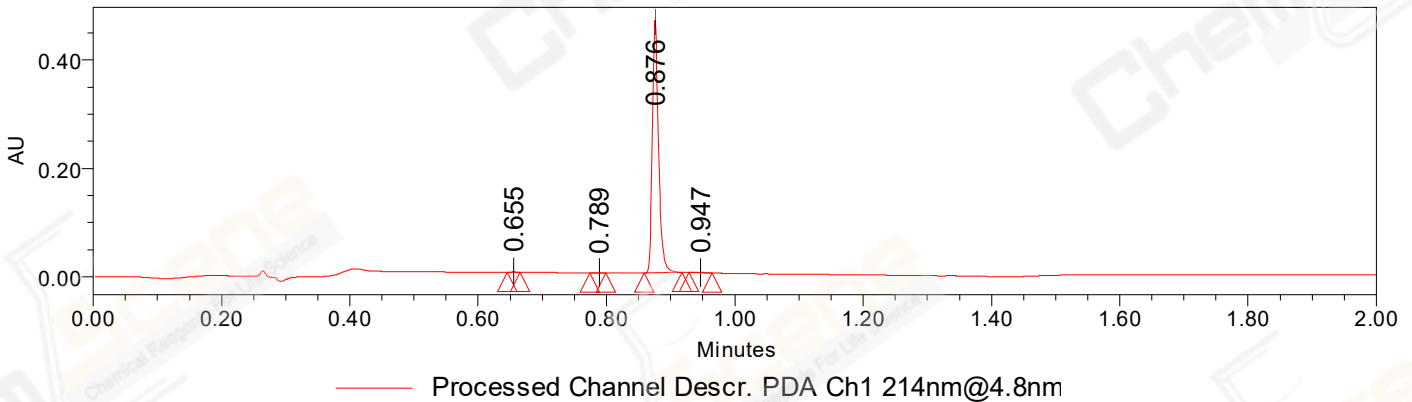
SAMPLE INFORMATION

Sample Name:	BIZ2022-O12-SCH2	Acquired By:	LY
CAS NO.:	23256-30-6	Date Acquired:	10/12/2022 5:36:45 PM CST
Vial:	2:C,7	Acq. Method Set:	1_POS_2MIN
Injection #:	1	Date Processed:	10/13/2022 10:32:05 AM CST,
Injection Volume:	0.30 ul	Processing Method:	PDA_01, MS_scan
Run Time:	2.8 Minutes	Channel Name:	PDA Ch1 214nm@4.8nm, MS TIC,
Sample Set Name:	20221012	Column Name:	A-RP-985

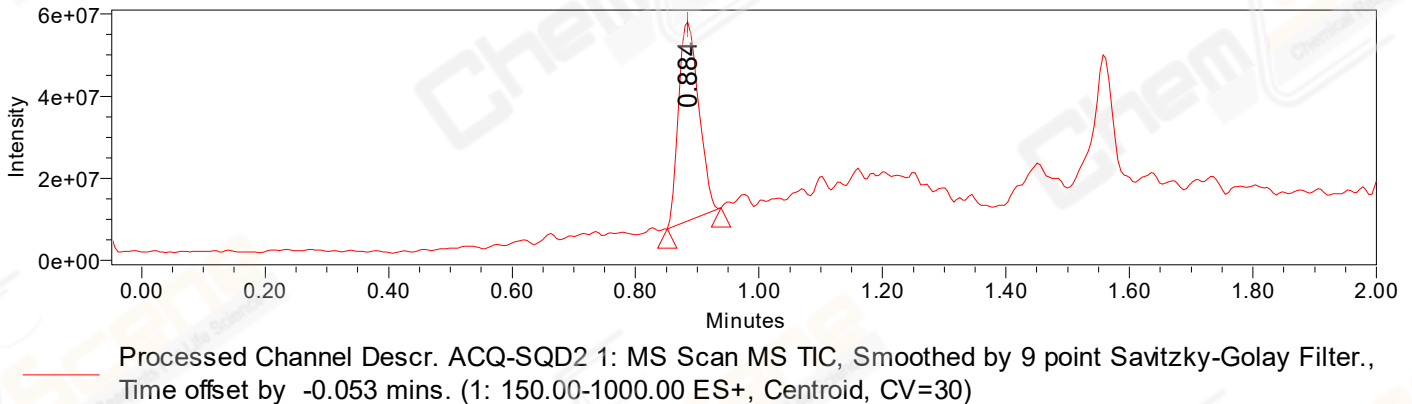
Auto-Scaled Chromatogram



Auto-Scaled Chromatogram



Auto-Scaled Chromatogram



Peak Results
Channel Name: PDA Ch2 254nm@4.8nm

	RT	Width (sec)	Area	Height	% Area	Base Peak (Combined) (m/z)	Channel Name
1	0.706	1.150	504	782	0.08	153.21	PDA Ch2 254nm@4.8nm
2	0.780	0.950	286	554	0.05	151.06	PDA Ch2 254nm@4.8nm
3	0.876	3.200	591662	869408	99.73	152.16	PDA Ch2 254nm@4.8nm
4	0.942	2.050	821	671	0.14	288.08	PDA Ch2 254nm@4.8nm

Peak Results
Channel Name: PDA Ch1 214nm@4.8nm

	RT	Width (sec)	Area	Height	% Area	Base Peak (Combined) (m/z)	Channel Name
1	0.655	1.200	383	589	0.12	153.02	PDA Ch1 214nm@4.8nm
2	0.789	1.500	424	543	0.13	151.03	PDA Ch1 214nm@4.8nm
3	0.876	3.500	318292	466556	99.58	152.19	PDA Ch1 214nm@4.8nm
4	0.947	2.150	541	443	0.17	288.08	PDA Ch1 214nm@4.8nm

Peak Results
Channel Name: MS TIC

	RT	Width (sec)	Area	Height	% Area	Base Peak (Combined) (m/z)	Channel Name
1	0.884	5.222	110281574	48483250	100.00	288.08	MS TIC

Match Plot

