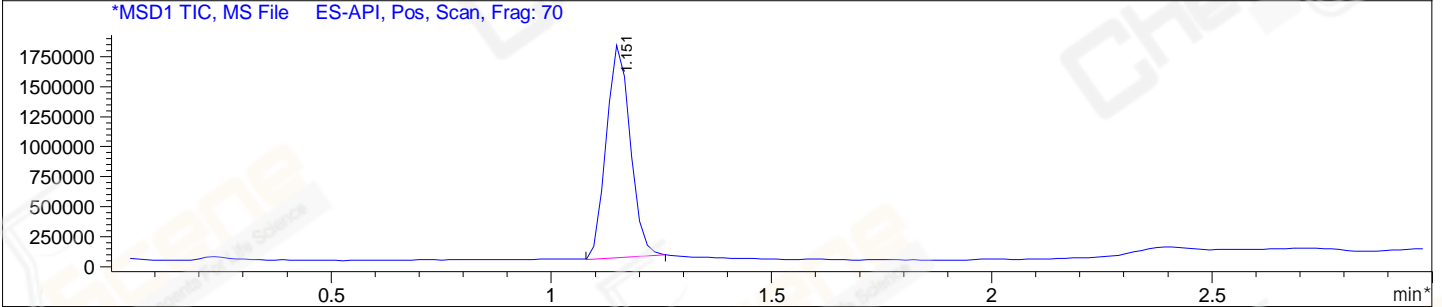
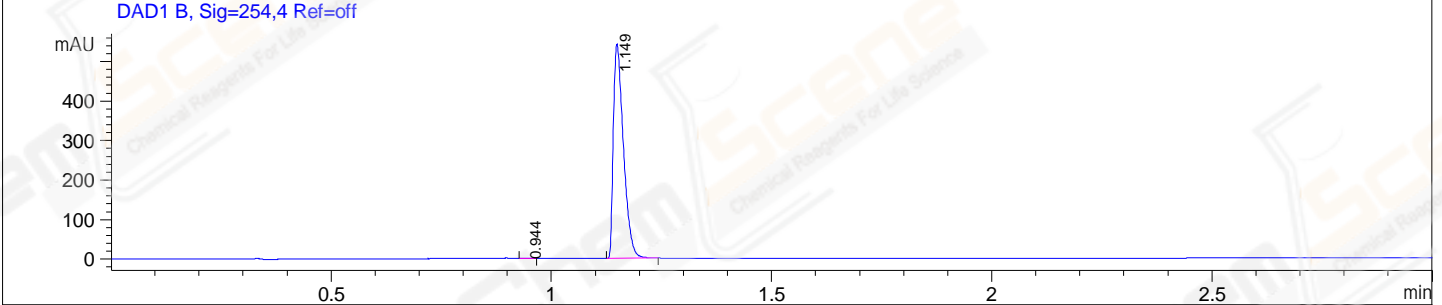
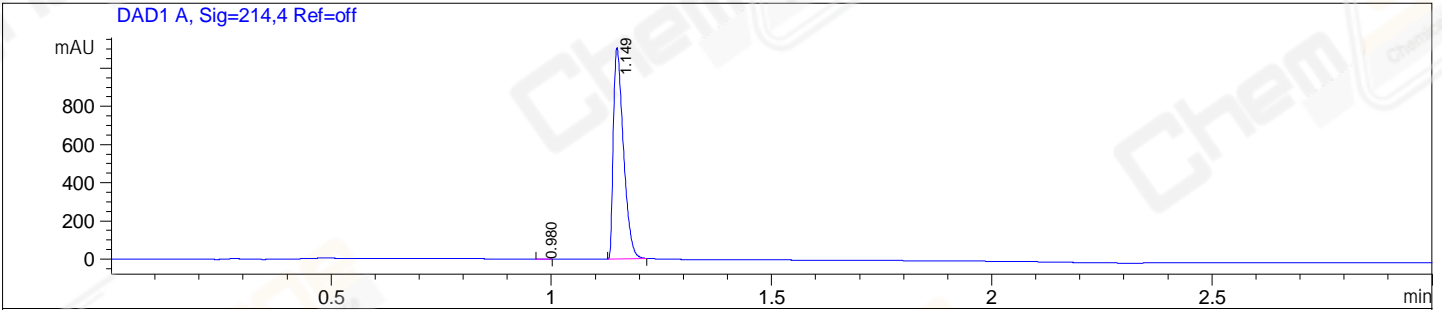


File E:\ChemStation\1\DATA\2023\2023-09\2023-09-15\CPK2023-915-23110-UPLC-MS-10-014722.D  
 Injection Date : 15-Sep-23, 13:30:02 Tgt Mass(EZX) :  
 Sample Name : CPK2023-915-23110 Location : P1-C-03  
 Acq. Operator : LY\_2278 Inj : 1  
 Spec. Reported : MS Integration Inj Volume : 0.8 ul  
 Acq. Method : E:\ChemStation\1\Methods\1-POS-UPLC3.0MIN(1.2)(150-1000).M  
 Analysis Method : E:\CHEMSTATION\1\METHODS\1-POS-UPLC3.0MIN(1.2)(150-1000).M  
 CAS NO. : 1092939-17-7 WalkUp method: '1-POS-3MIN' Project: CPK2023  
 Method Info : Mobile Phase: A: water(0.01%TFA) B:ACN(0.01%TFA)  
 Gradient: 5% to 95%B within 2.0 min  
 Flow Rate :1.2ml/min  
 Column :Shim-pack Scepter C18-120, 3.0\*33mm,3um  
 Oven Temperature : 45C



Integration Results for DAD1 A, Sig=214,4 Ref=off

RetTim	Width	Area	Height	Area%
0.98	0.02	0.75	0.63	0.04
1.15	0.03	1755.10	1106.30	99.96

Integration Results for DAD1 B, Sig=254,4 Ref=off

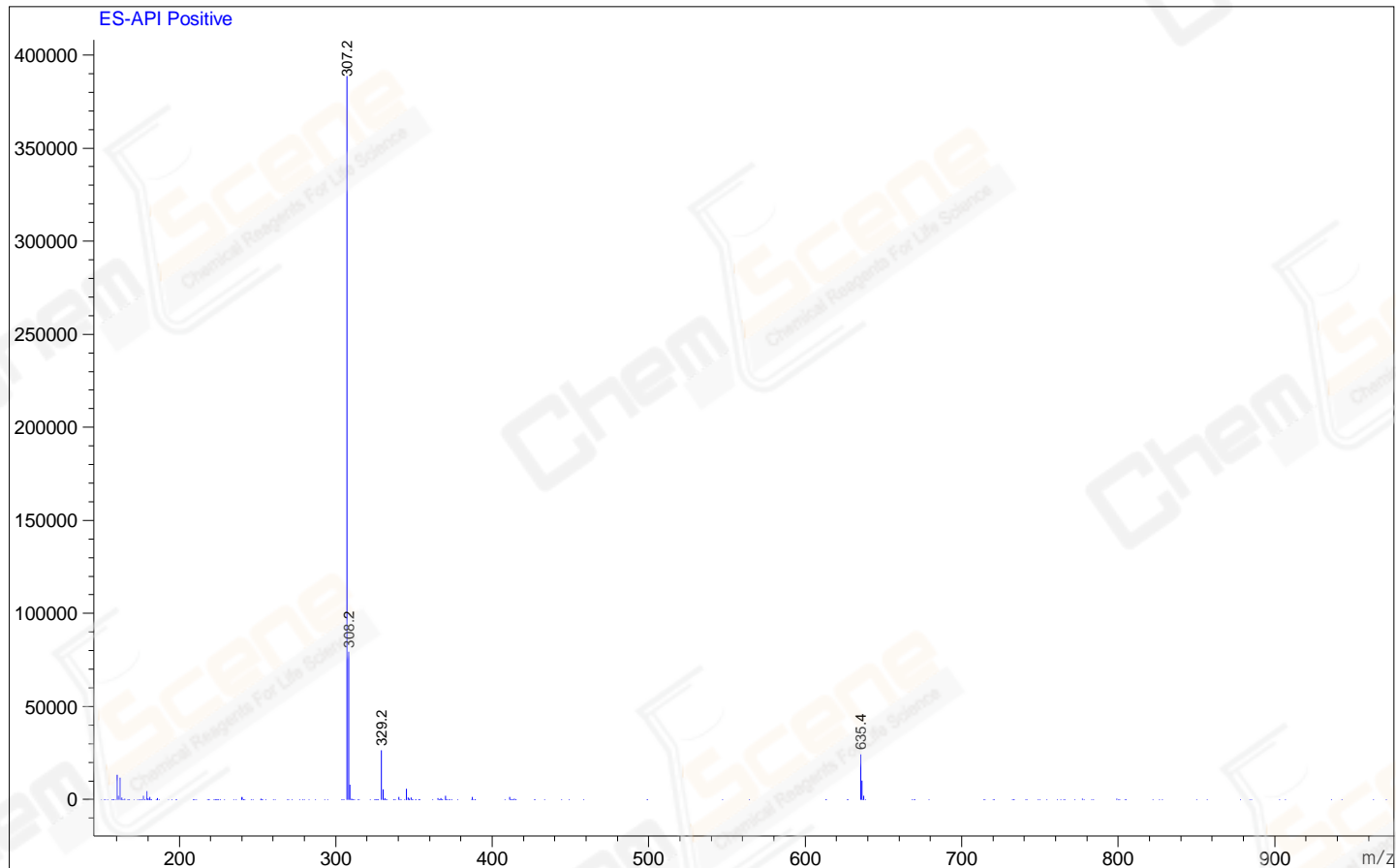
RetTim	Width	Area	Height	Area%
0.94	0.02	0.62	0.53	0.07
1.15	0.03	863.76	542.65	99.93

Integration Results for MSD1 TIC, MS File

RetTim	Width	Area	Height	Area%
1.15	0.06	6704022.00	1803727.00	100.00

Ret. Time: 1.15

<<<< POSITIVE SPECTRA >>>>



\*\*\* End of Report \*\*\*